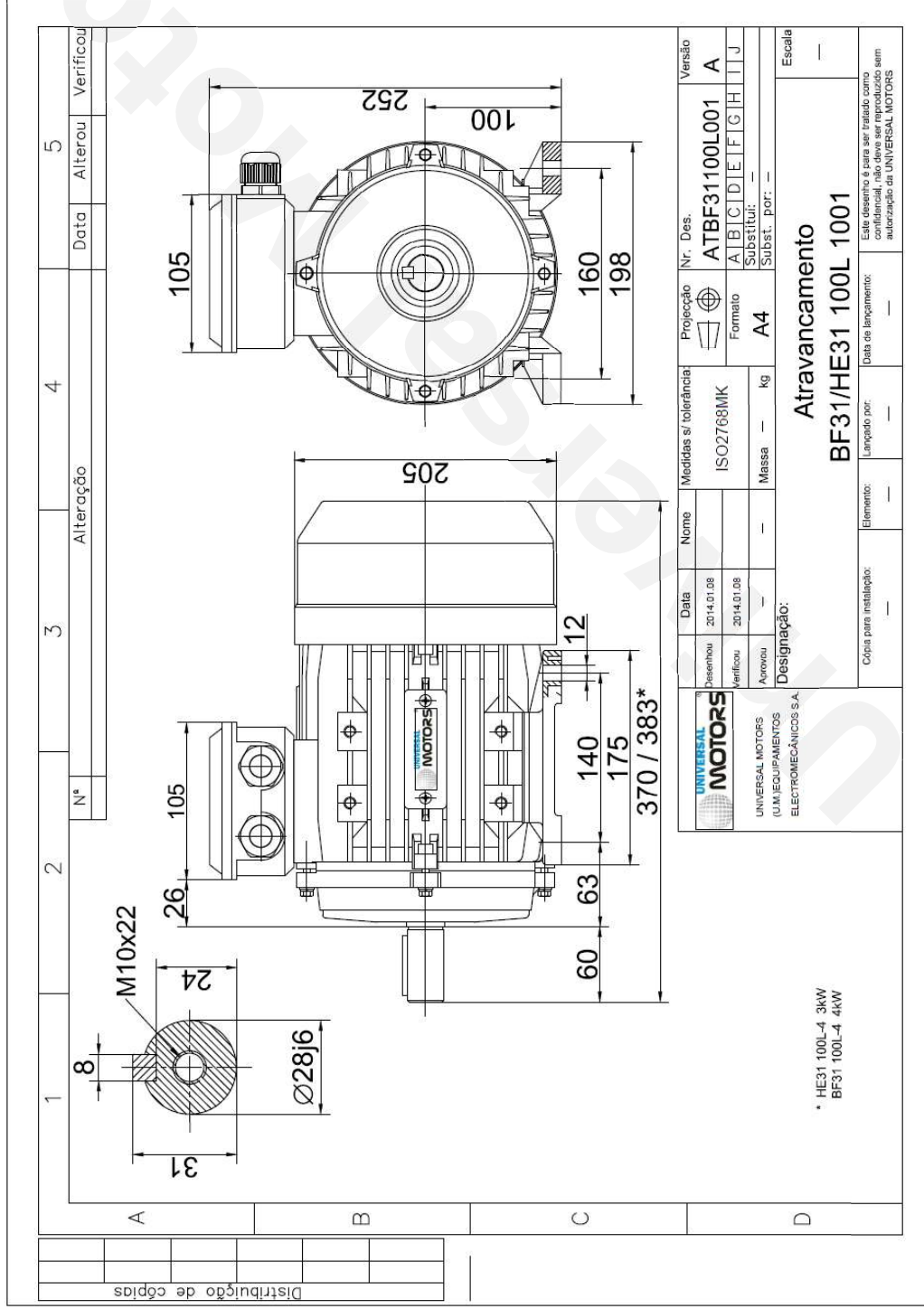


TECHNICAL DATA

Three Phase Electric Motors - Aluminum Frame
BF31 100 L2 4 / 8
3 / 0.55 kW
1430 / 710 RPM

Motor type: BF31 100 L2 4 / 8
Output: 3 / 0.55 kW
Speed (min⁻¹): 1430 / 710 RPM
Voltage: 400 V
Frequency: 50 Hz
Current: 6.53 / 2.33 A
Power factor (Cos Ø): 0.82 / 0.51
Poles: 4 / 8
Insulation class: F
Temperature rise Class: B
Efficiency 100%: 81.5 / 72.5 %
Torque: 20.03 / 7.4 N.m
Tstarting/Tnominal: 2.6 / 1.8
Istarting/Inominal: 6.2 / 3.2
Tmaximum/Tnominal: 2.8 / 2.8
Weight: 25.0 Kg
Bearing DE: 6206 2Z C3
Bearing NDE: 6206 2Z C3



Regime - S1

Altitude - 1000m

Environment Temperature - 40°C

CONTACTS:

Universal Motors UK, Ltd
 Unit E2, Meltham Mills Industrial Estate, Meltham, West Yorkshire HD9 4AR, U.K.

* References applied only in the UK

Tel: +44(0) 1484 660 222
 Fax: +44(0) 1484 660 333
 Mail: enquiries@universalmotors-group.co.uk