

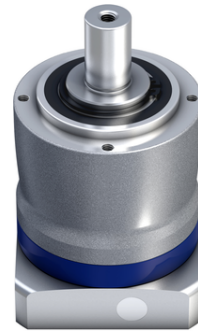


**WITTENSTEIN**

## Datasheet

alpha Value Line

NP 035 STANDARD



Gearbox characteristics	
Designation: NP035S-MF1-10-1E1-1S	
Product type	NP
Size	035
Characteristic	Standard
Gearbox model	STANDARD
Stages	1
Ratio	10
Output shape	Shaft with key
Clamping hub diameter	19 mm
Max. backlash	Standard $\leq 8$ arcmin
Gearbox material number	10032814

Motor mounting parts	
Adapter plate material number	10034843

Performance data	
Max. torque $T_{2\alpha}$	352 Nm
Emergency stop torque	500 Nm
Max. input speed	6,000 min <sup>-1</sup>
Permitted average input speed	3,000 min <sup>-1</sup>
Max. tilting moment	317 Nm
Max. axial force	4,000 N
Max. lateral force	5,000 N
Moment of inertia	0.87 kgcm <sup>2</sup>
Weight	9.4 kg
Lubrication	Lubricated for life
Max. permitted housing temperature	90 °C
Protection class	IP 64
Operating noise	65 dB(A)
Paint	Dark pearl gray / innovation blue