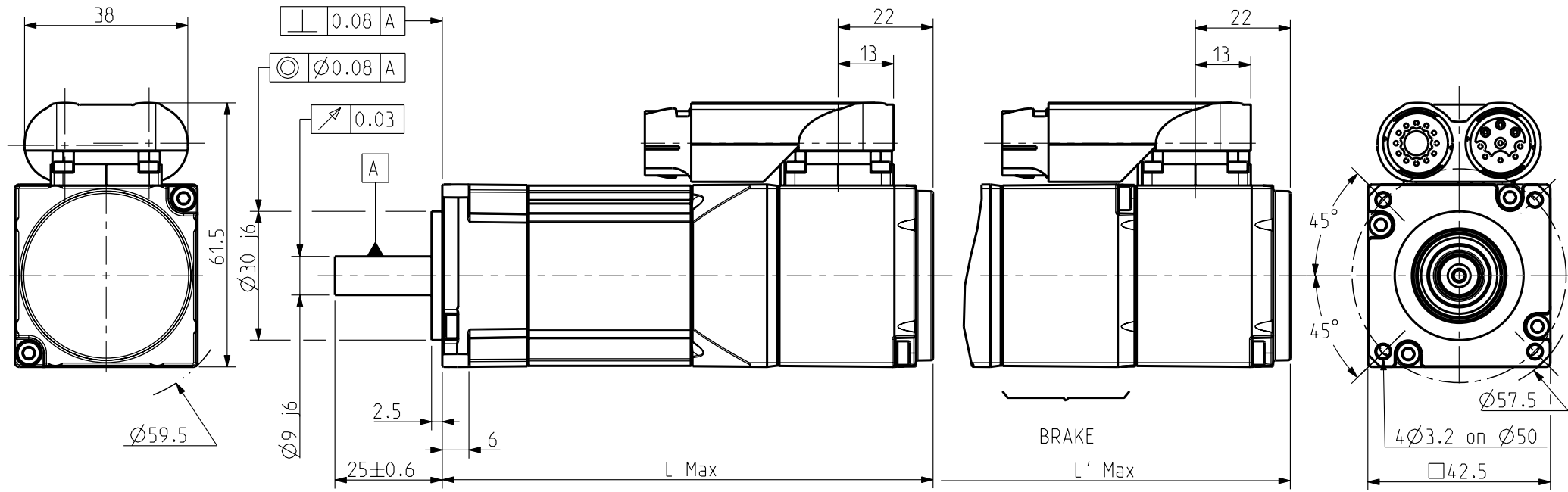


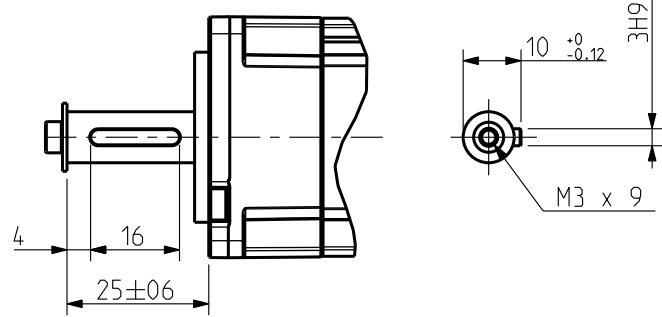
Feedback Letter : A



FEEDBACK OPTIONS

Scale 3/4

KEY



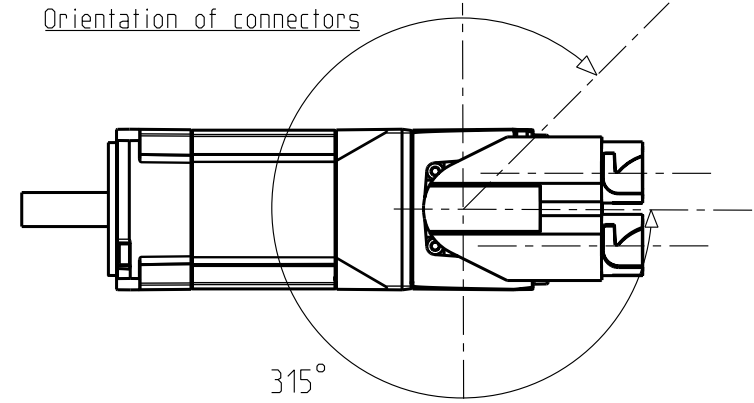
BRAKE Supply voltage : 24V ±10%  
Static torque

|        |        |
|--------|--------|
| 20 °C  | 0.4 Nm |
| 100 °C | *      |

WEIGHT

|            |        |
|------------|--------|
|            | NX110  |
| No Brake   | 0.8 Kg |
| With Brake | 1 Kg   |

Orientation of connectors



Scale 3/4

| Feedback option (Feedback letter) | Resolver (A) |
|-----------------------------------|--------------|
| L (mm)                            | 115          |
| L' (mm)                           | 146          |

N X 1 1 0 E \_ \_ R 7 \_ \_ \_

Torque range (depends on length)

Winding (depends on speed)

0 : Plain Shaft  
1 : key

0 : IP 64  
1 : IP 65

A : Resolver

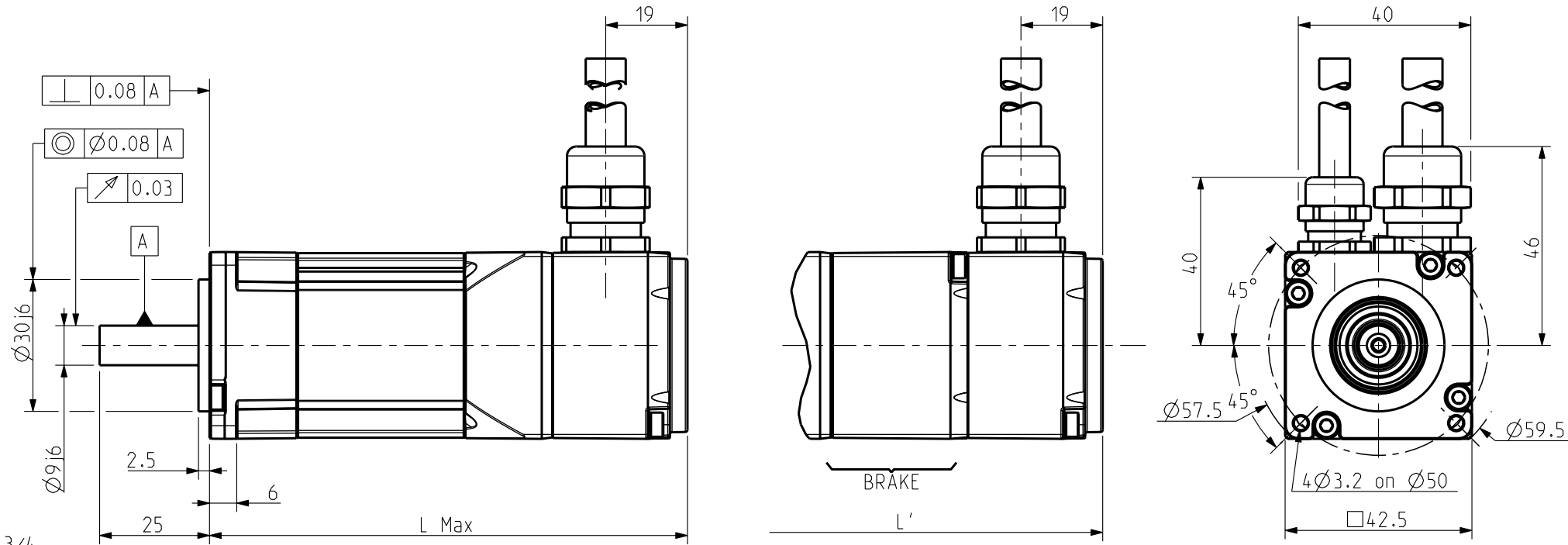
0 : Without Brake  
3 : Brake

See connectors pin out and encoder settings on drawing 344993

Sheet : 1/3

|   |                    |               |          |         |          |    |  |  |  |  |              |   |                            |        |    |        |   |
|---|--------------------|---------------|----------|---------|----------|----|--|--|--|--|--------------|---|----------------------------|--------|----|--------|---|
| This document is the property of PARVEX. Transmission as well as reproduction or copy is not permitted without written authorisation. | General tolerances | Drawn         | 26/11/09 | BB      | Visa     | BB |  |  |  |  | Scale<br>3/4 | <br>8 Avenue du Lac. BP 249<br>21007-DIJON cedex-FRANCE<br>www.SSDrives.com | NX100<br>CONNECTOR VARIANT | Format | A3 | 344581 | - |
|   | DIN ISO 2768 mk    | Modifications | A        | AM23337 | 15/02/10 | OD |  |  |  |  |              |   |                            |        |    |        |   |

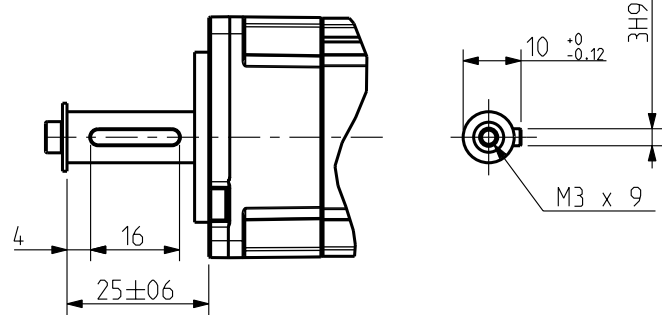
Feedback Letter : A



Scale 3/4

FEEDBACK OPTIONS

KEY



Scale 3/4

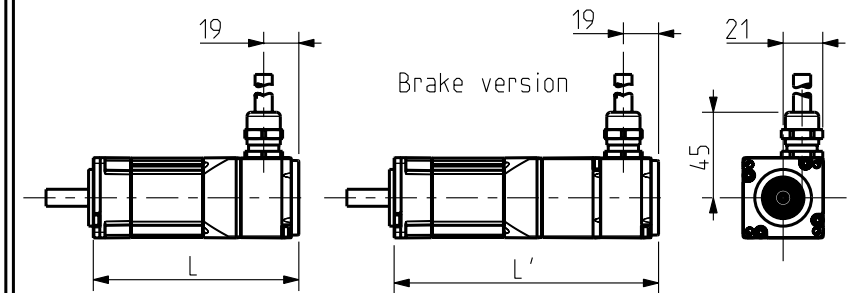
BRAKE Supply voltage : 24V  $\pm 10\%$   
Static torque

|        |        |
|--------|--------|
| 20 °C  | 0.4 Nm |
| 100 °C | *      |

WEIGHT

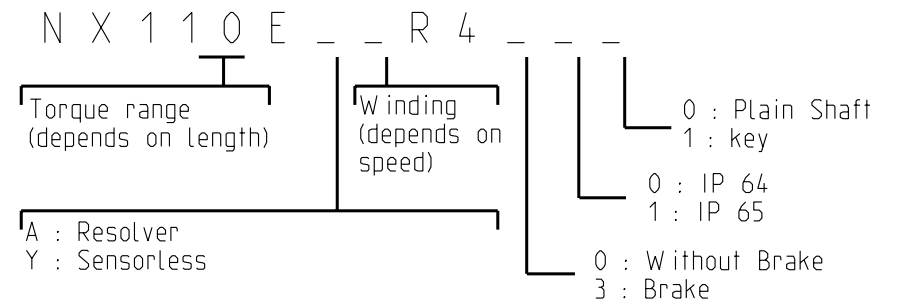
|            |        |
|------------|--------|
|            | NX110  |
| No Brake   | 0.8 Kg |
| With Brake | 1 Kg   |

Feedback Letter : Y



Scale 1/4

| Feedback option (Feedback letter) | Resolver (A) | Sensorless (Y) |
|-----------------------------------|--------------|----------------|
| L (mm)                            | 110          | 110            |
| L' (mm)                           | 141          | 141            |



WIRES INSIDE PVC SHEATH  
OVERALL SHIELDING

See wire connection and encoder settings on drawing 344993

Sheet : 2/3

|   |                    |               |          |          |      |  |  |  |  |  |  |  |  |  |  |  |  |  |  |
|---|--------------------|---------------|----------|----------|------|--|--|--|--|--|--|--|--|--|--|--|--|--|--|
| This document is the property of PARVEX. Transmission as well as reproduction or copy is not permitted without written authorisation. | General tolerances | Drawn         | 26/11/09 | BB       | Visa |  |  |  |  |  |  |  |  |  |  |  |  |  |  |
|   | DIN ISO 2768 mk    | Modifications |          |          |      |  |  |  |  |  |  |  |  |  |  |  |  |  |  |
|   |                    | A             | AM23337  | 15/02/10 | OD   |  |  |  |  |  |  |  |  |  |  |  |  |  |  |



NX100

WIRES INSIDE PVC SHEATH

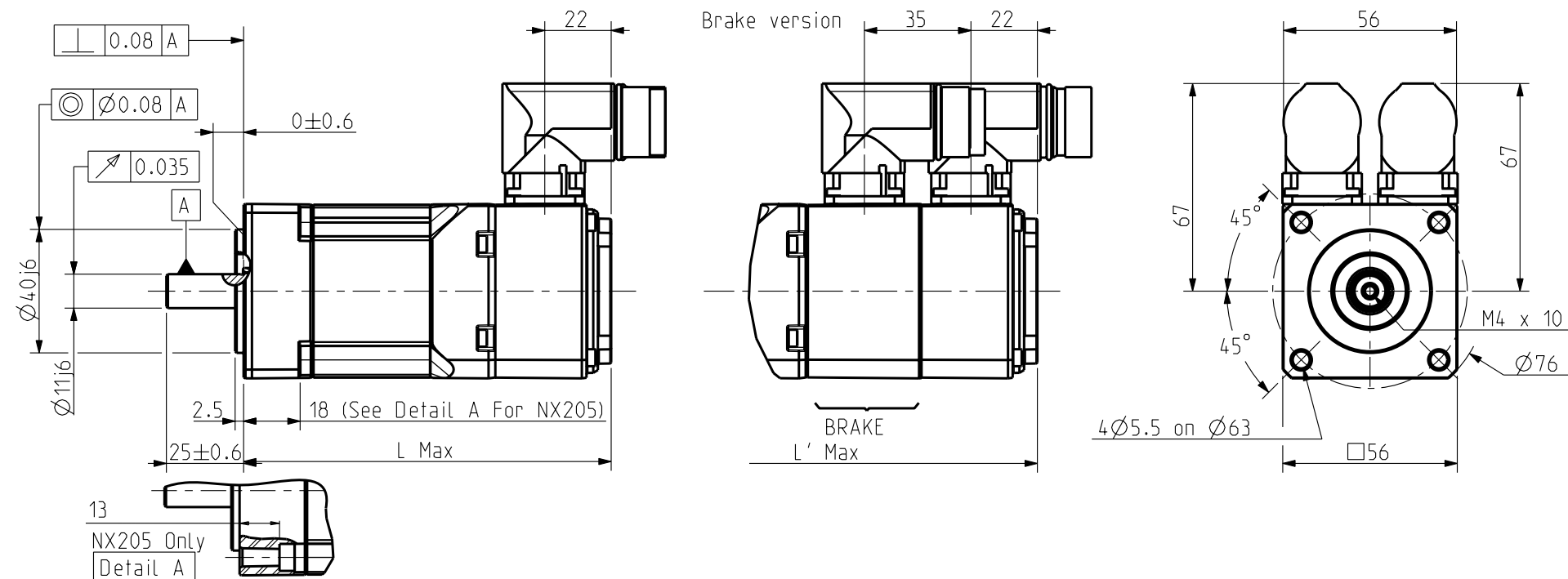
Format A3

344581

A



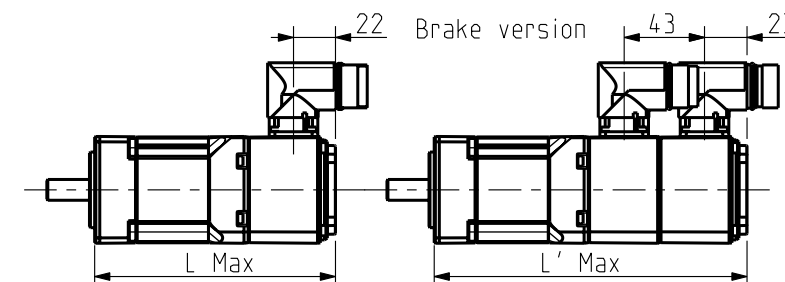
Feedback Letter : A / X



Scale 1/2

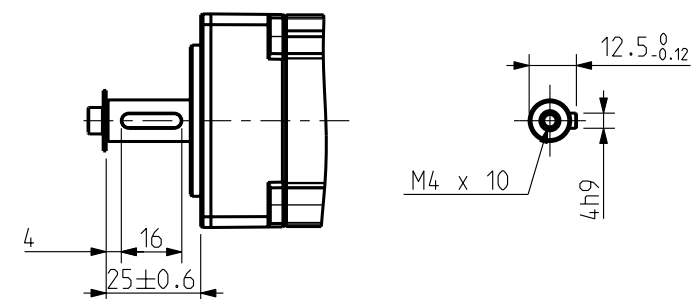
FEEDBACK OPTIONS

Feedback Letter : R/S



Scale 1/4

KEY



Scale 1/2

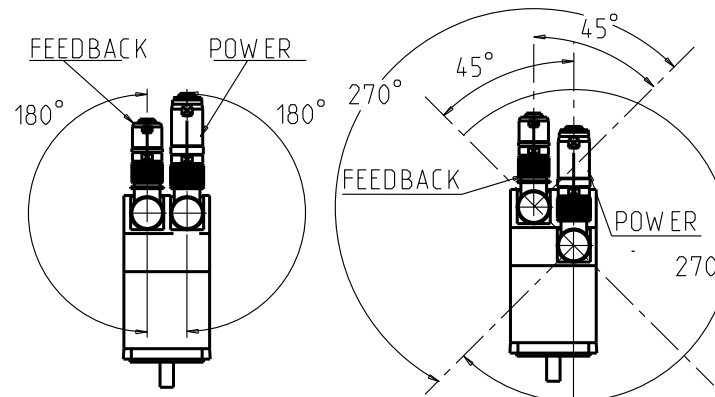
BRAKE Supply voltage : 24V ±10%  
Static torque

|        |      |
|--------|------|
| 20 °C  | 1 Nm |
| 100 °C | *    |

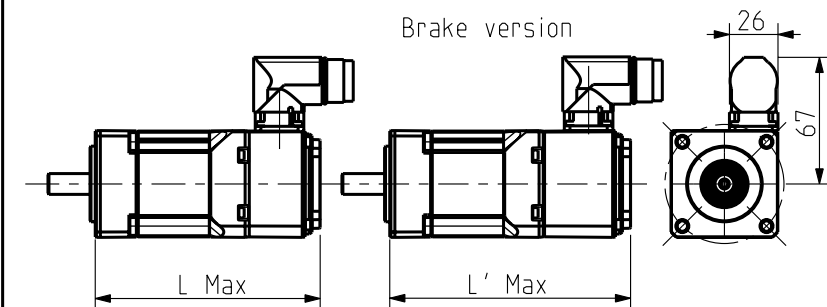
WEIGHT

|            |        |        |
|------------|--------|--------|
|            | NX205  | NX210  |
| No Brake   | 0.8 Kg | 1.3 Kg |
| With Brake | 1.1 Kg | 1.6 Kg |

ORIENTATION OF CONNECTORS



Feedback Letter : Y



Scale : 1/4

|       | Feedback option (feedback letter) | Resolver (A) | Low cost encoder (X) | Hiperface SKS36 (R) | Hiperface SKM36 (S) | Sensorless (Y) |
|-------|-----------------------------------|--------------|----------------------|---------------------|---------------------|----------------|
| NX205 | L (mm)                            |              | 100                  |                     | 108                 | 100            |
|       | L' (mm)                           |              | 137                  |                     | 146                 | 108            |
| NX210 | L (mm)                            |              | 120                  |                     | 128                 | 120            |
|       | L' (mm)                           |              | 157                  |                     | 166                 | 128            |

N X 2 \_ \_ E \_ \_ R 7 \_ \_ \_

Torque range (depends on length)

Winding (depends on speed)

0 : Plain Shaft  
1 : key

0 : IP 64  
1 : IP 65

A : Resolver  
R : Hiperface Singleturn SKS36  
S : Hiperface Multiturn SKM36  
X : Low Cost Encoder  
Y : Sensorless

0 : Without Brake  
3 : Brake  
\* : Thermal protection options on drawing 344993

See connectors pin out and encoder settings on drawing 344993

Sheet : 1/4

|   |                    |               |                     |                     |      |   |                      |  |  |  |  |  |  |  |  |  |  |  |  |  |
|---|--------------------|---------------|---------------------|---------------------|------|---|----------------------|--|--|--|--|--|--|--|--|--|--|--|--|--|
| This document is the property of PARVEX. Transmission as well as reproduction or copy is not permitted without written authorisation. | General tolerances | Drawn         | 26/11/09            | BB                  | Visa |   |                      |  |  |  |  |  |  |  |  |  |  |  |  |  |
|   | DIN ISO 2768 mk    | Modifications | C                   | AM23878 08/06/12 OD |      |   |                      |  |  |  |  |  |  |  |  |  |  |  |  |  |
|   |                    |               | B                   | AM23403 10/05/10 OD |      |   |                      |  |  |  |  |  |  |  |  |  |  |  |  |  |
|   |                    | A             | AM23337 15/02/10 OD |                     |      | D | AM 24108 22/04/13 SD |  |  |  |  |  |  |  |  |  |  |  |  |  |



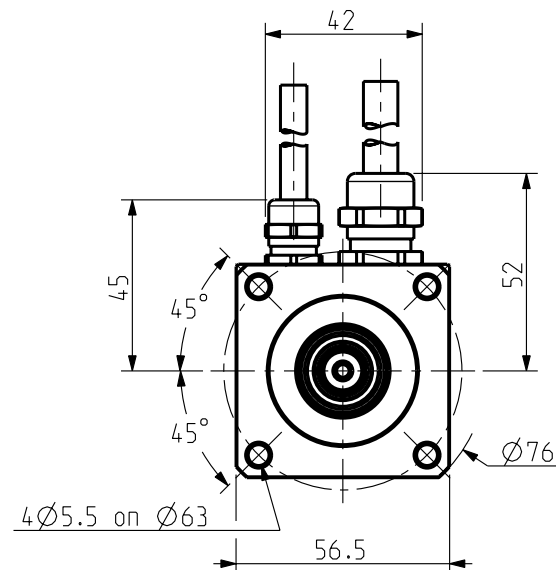
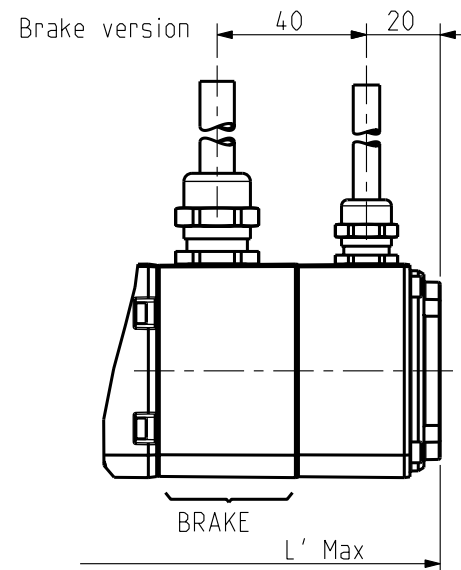
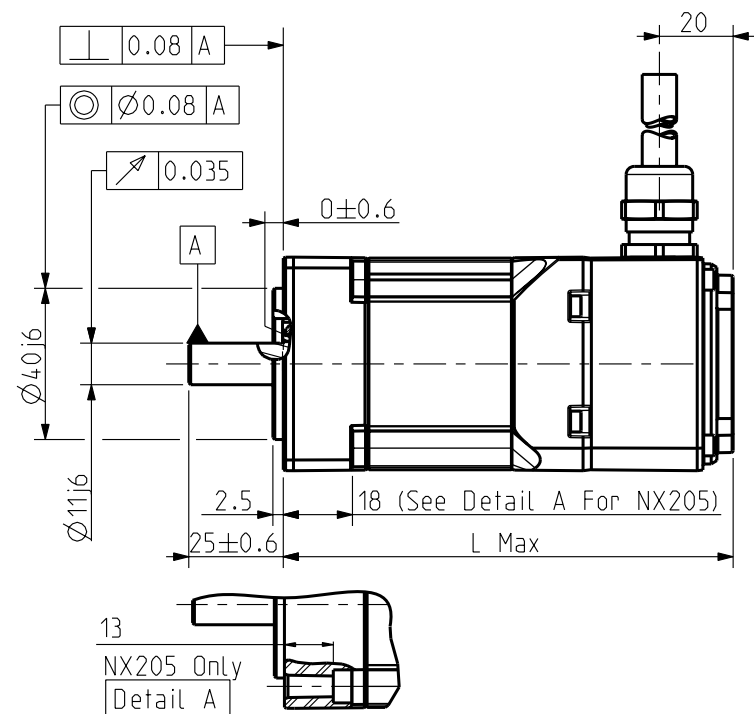
Scale 1/2



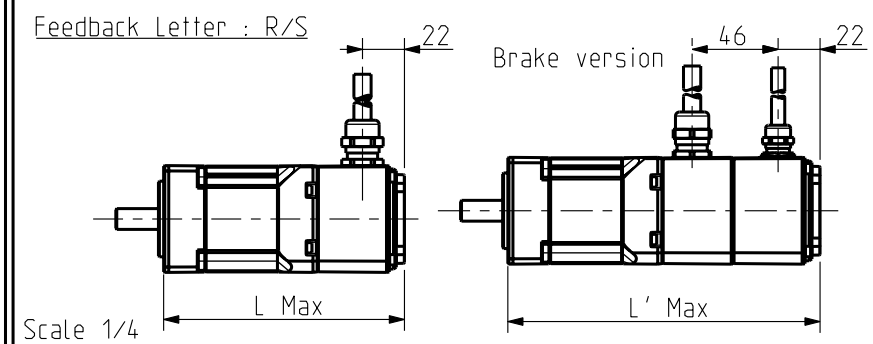
NX200  
CONNECTOR VARIANT

Format A3  
344594

Feedback Letter : A / X

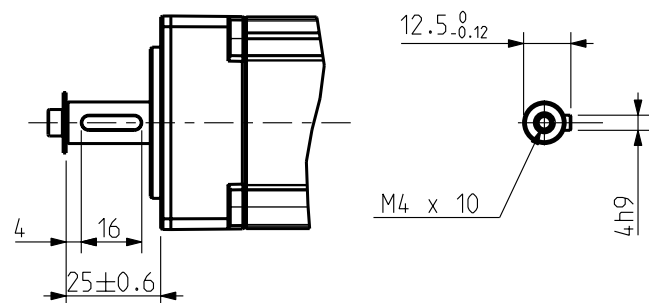


FEEDBACK OPTIONS



Scale 1/2

KEY



Scale 1/2

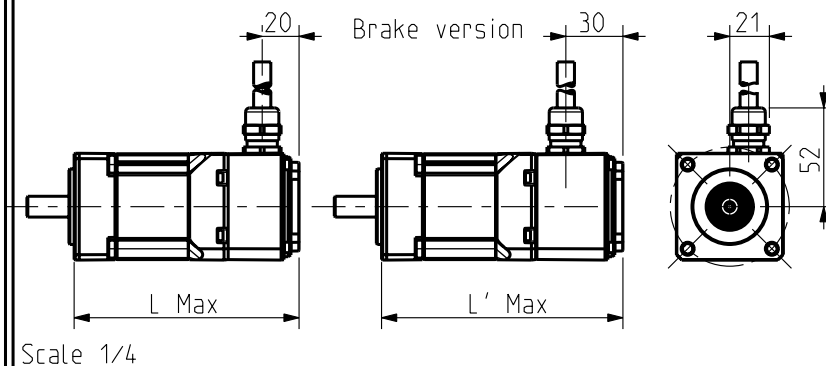
BRAKE Supply voltage : 24V ±10%  
Static torque

|        |      |
|--------|------|
| 20 °C  | 1 Nm |
| 100 °C | *    |

WEIGHT

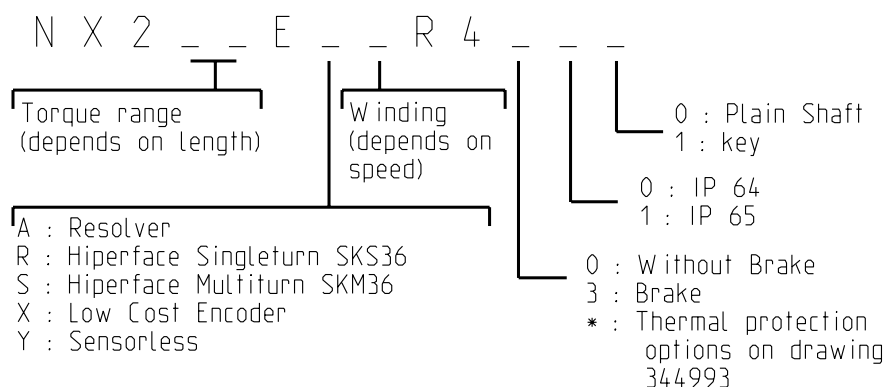
|            |        |        |
|------------|--------|--------|
|            | NX205  | NX210  |
| No Brake   | 0.8 Kg | 1.3 Kg |
| With Brake | 1.1 Kg | 1.6 Kg |

Feedback Letter : Y



Scale 1/4

|       | Feedback option (feedback letter) | Resolver (A) | Low cost encoder (X) | Hiperface SKS36 (R) | Hiperface SKM36 (S) | Sensorless (Y) |
|-------|-----------------------------------|--------------|----------------------|---------------------|---------------------|----------------|
| NX205 | L (mm)                            | 100          |                      | 108                 |                     | 100            |
|       | L' (mm)                           | 137          |                      | 146                 |                     | 119            |
| NX210 | L (mm)                            | 120          |                      | 128                 |                     | 120            |
|       | L' (mm)                           | 157          |                      | 166                 |                     | 129            |



WIRES INSIDE PVC SHEATH  
OVERALL SHIELDING

See wire connection out and encoder settings on drawing 344993

Sheet : 2/4

|   |                    |               |          |                     |      |   |          |          |    |  |  |  |  |  |  |  |  |  |  |  |
|---|--------------------|---------------|----------|---------------------|------|---|----------|----------|----|--|--|--|--|--|--|--|--|--|--|--|
| This document is the property of PARVEX. Transmission as well as reproduction or copy is not permitted without written authorisation. | General tolerances | Drawn         | 26/11/09 | BB                  | Visa |   |          |          |    |  |  |  |  |  |  |  |  |  |  |  |
|   | DIN ISO 2768 mk    | Modifications | C        | AM23878 08/06/12 OD |      |   |          |          |    |  |  |  |  |  |  |  |  |  |  |  |
|   |                    |               | B        | AM23403 10/05/10 OD |      |   |          |          |    |  |  |  |  |  |  |  |  |  |  |  |
|   |                    | A             | AM23337  | 15/02/10            | OD   | D | AM 24108 | 22/04/13 | SD |  |  |  |  |  |  |  |  |  |  |  |

8 Avenue du Lac. BP 249  
21007-DIJON cedex-FRANCE  
www.SSDrives.com

Scale 1/2

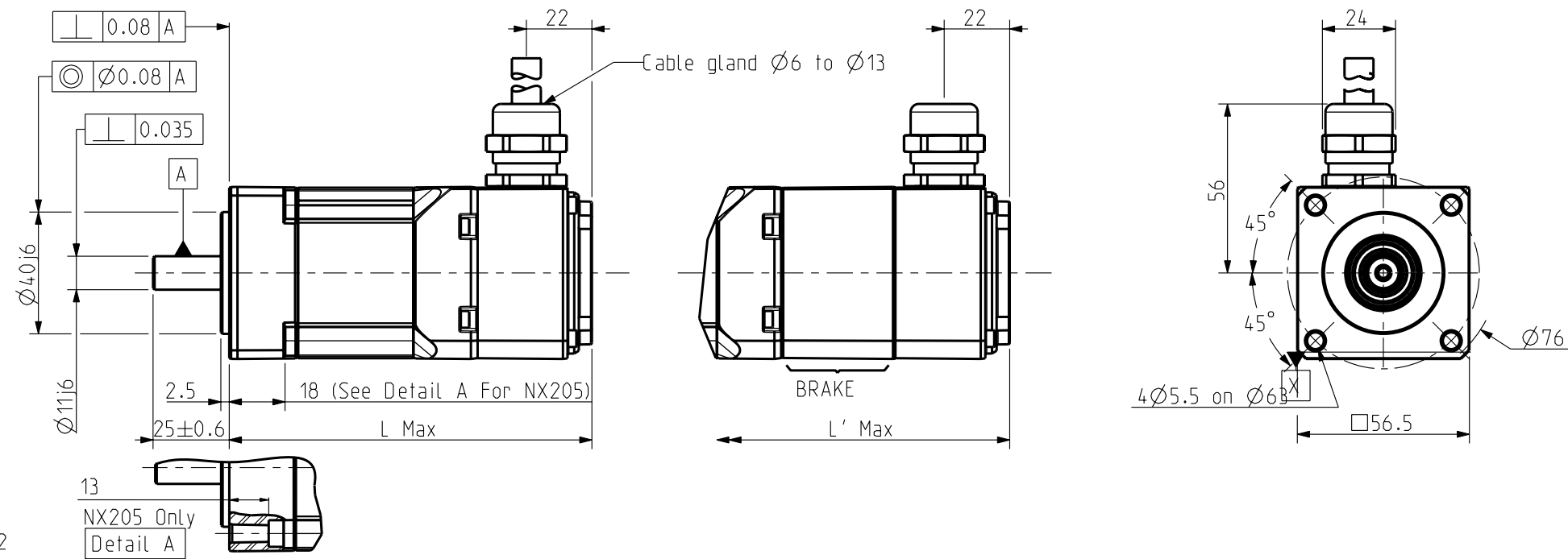
NX200

WIRES INSIDE PVC SHEATH

Format A3

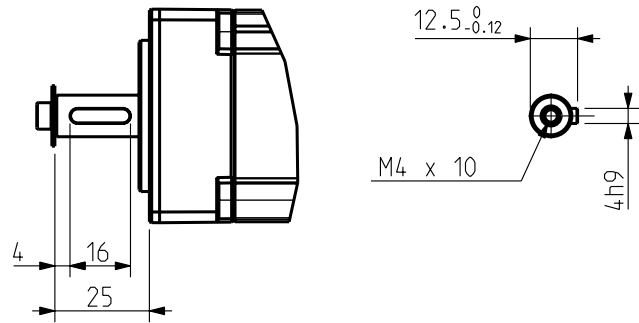
344594

Feedback Letter : Y



Scale 1/2

13  
NX205 Only  
Detail A



Scale 1/2

BRAKE Supply voltage : 24V ±10%  
Static torque

|        |      |
|--------|------|
| 20 °C  | 1 Nm |
| 100 °C | *    |

WEIGHT

|            |        |        |
|------------|--------|--------|
|            | NX205  | NX210  |
| No Brake   | 0.8 Kg | 1.3 Kg |
| With Brake | 1.1 Kg | 1.6 Kg |

|       | Feedback option (feedback letter) | Sensorless (Y) |
|-------|-----------------------------------|----------------|
| NX205 | L (mm)                            | 100            |
|       | L' (mm)                           | 137            |
| NX210 | L (mm)                            | 120            |
|       | L' (mm)                           | 157            |

N X 2 \_ \_ E Y \_ R 6 \_ \_ \_

Torque range (depends on length)      Winding (depends on speed)

0 : Plain Shaft  
1 : key

0 : IP 64  
1 : IP 65

0 : Without Brake  
3 : Brake  
\* : Thermal protection options on drawing 344993

See connectors pin out and encoder settings on drawing 344993

Sheet : 3/4

This document is the property of PARVEX. Transmission as well as reproduction or copy is not permitted without written authorisation.

General tolerances  
DIN ISO 2768 mk

|               |          |                     |      |                      |  |  |  |
|---------------|----------|---------------------|------|----------------------|--|--|--|
| Drawn         | 26/11/09 | BB                  | Visa |                      |  |  |  |
| Modifications | C        | AM23878 08/06/12 OD |      |                      |  |  |  |
|               | B        | AM23403 10/05/10 OD |      |                      |  |  |  |
|               | A        | AM23337 15/02/10 OD | D    | AM 24108 22/04/13 SD |  |  |  |

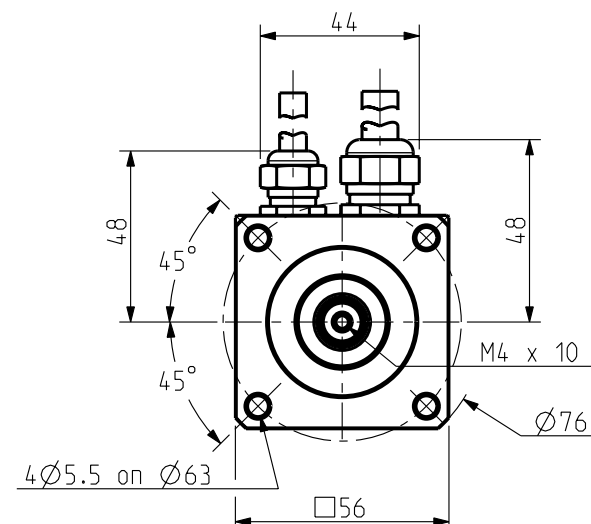
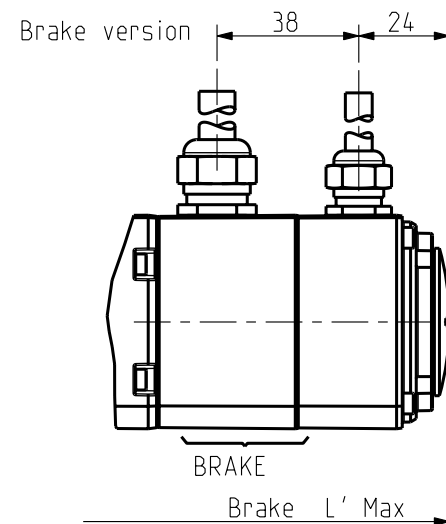
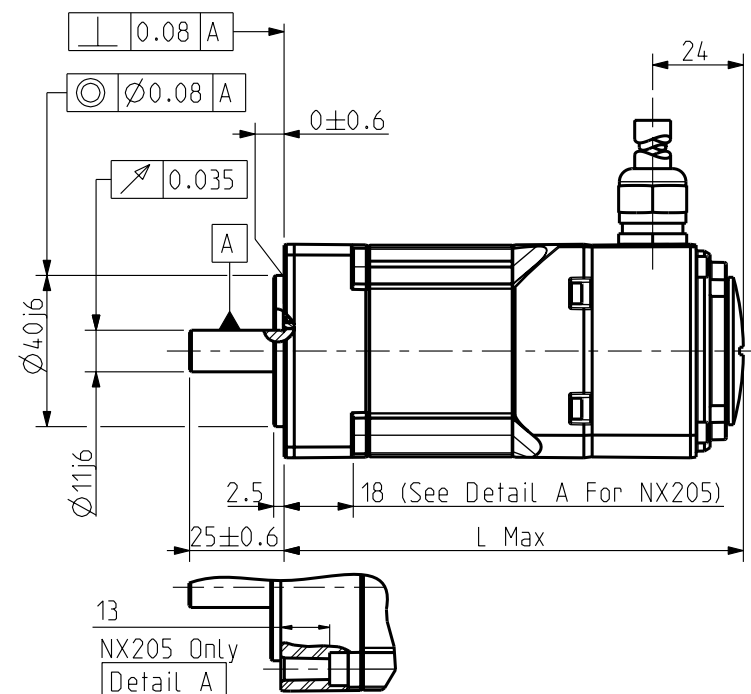
Scale  
1/2

**Parker**  
8 Avenue du Lac. BP 249  
21007-DIJON cedex-FRANCE  
www.SSDrives.com

NX200  
SENSORLESS VARIANT

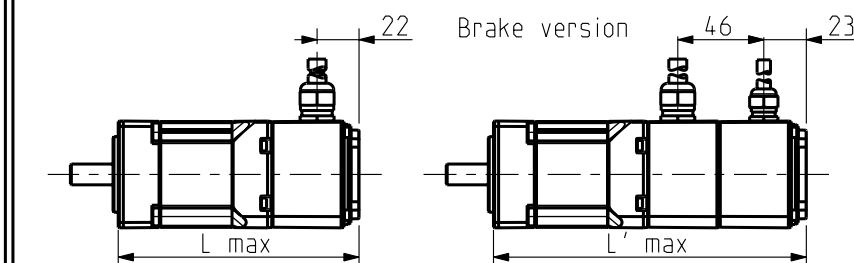
Format  
A3  
344594

Feedback Letter : A / X



FEEDBACK OPTIONS

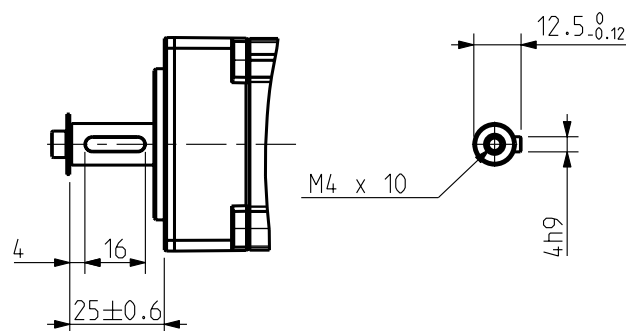
Feedback Letter : R/S



Scale 1/4

Scale 1/2

KEY



Scale 1/2

BRAKE Supply voltage : 24V ±10%  
Static torque

|        |      |
|--------|------|
| 20 °C  | 1 Nm |
| 100 °C | *    |

WEIGHT

|            |        |        |
|------------|--------|--------|
|            | NX205  | NX210  |
| No Brake   | 0.8 Kg | 1.3 Kg |
| With Brake | 1.1 Kg | 1.6 Kg |

|       | Feedback option (feedback letter) | Resolver (A) | Low cost encoder (X) | Hiperface SKS36 (R) | Hiperface SKM36 (S) |
|-------|-----------------------------------|--------------|----------------------|---------------------|---------------------|
| NX205 | L (mm)                            |              | 102                  |                     | 106                 |
|       | L' (mm)                           |              | 140                  |                     | 146                 |
| NX210 | L (mm)                            |              | 122                  |                     | 128                 |
|       | L' (mm)                           |              | 160                  |                     | 166                 |

N X 2 \_ \_ E \_ \_ R 1 \_ \_ \_

Torque range (depends on length)

Winding (depends on speed)

0 : Plain Shaft  
1 : key

0 : IP 64  
1 : IP 65

A : Resolver  
R : Hiperface Singleturn SKS36  
S : Hiperface Multiturn SKM36  
X : Low Cost Encoder  
Y : Sensorless

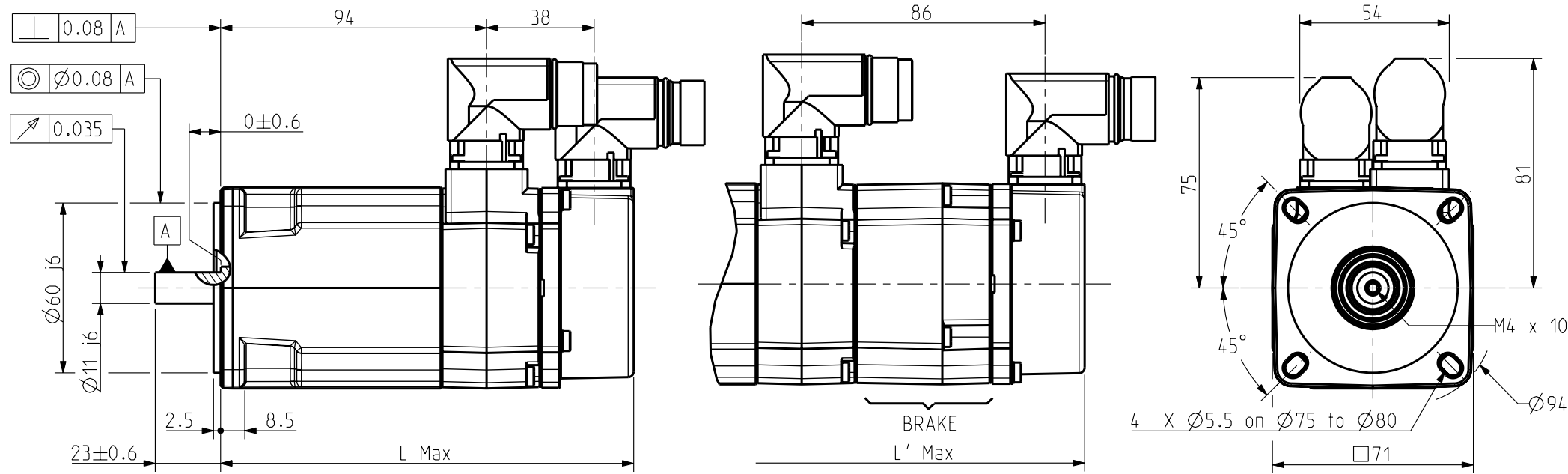
0 : Without Brake  
3 : Brake  
\* : Thermal protection options on drawing 344993

See wire connection out and encoder settings on drawing 344993

Sheet : 4/4

|   |                    |               |                     |                     |      |  |  |  |  |              |  |                        |        |    |        |   |
|---|--------------------|---------------|---------------------|---------------------|------|--|--|--|--|--------------|--|------------------------|--------|----|--------|---|
| This document is the property of PARVEX. Transmission as well as reproduction or copy is not permitted without written authorisation. | General tolerances | Drawn         | 26/11/09            | BB                  | Visa |  |  |  |  | Scale<br>1/2 | <br>8 Avenue du Lac. BP 249<br>21007-DIJON cedex-FRANCE<br>www.SSDdrives.com | NX200<br>CABLE VARIANT | Format | A3 | 344594 | D |
|   | DIN ISO 2768 mk    | Modifications | C                   | AM23878 08/06/12 OD |      |  |  |  |  |              |  |                        |        |    |        |   |
|   |                    | B             | AM23403 10/05/10 OD |                     |      |  |  |  |  |              |  |                        |        |    |        |   |

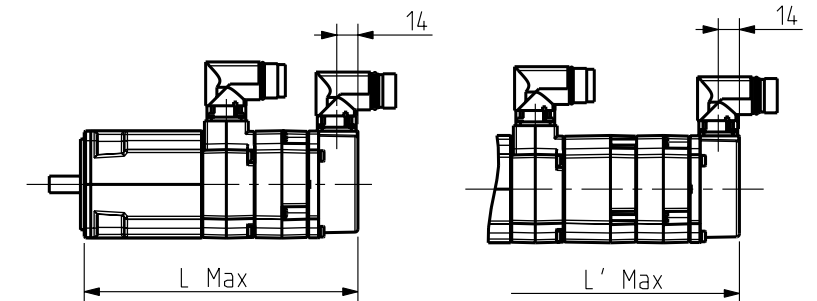
Feedback letter : A/X



Scale 1:2

FEEDBACK OPTIONS

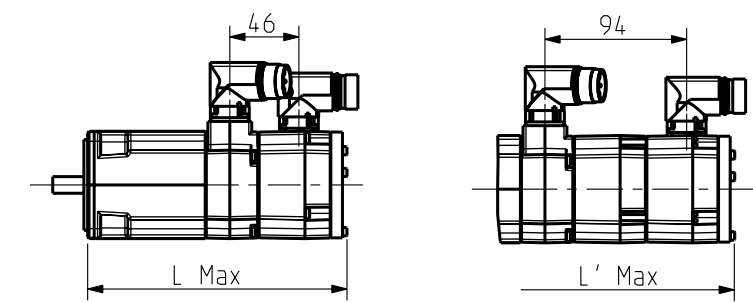
Feedback letter : R/S/V/W



Scale 1:5

Brake Version

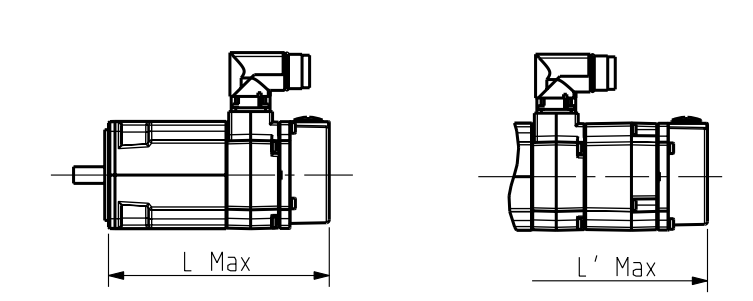
Feedback letter : T/U



Scale 1:5

Brake Version

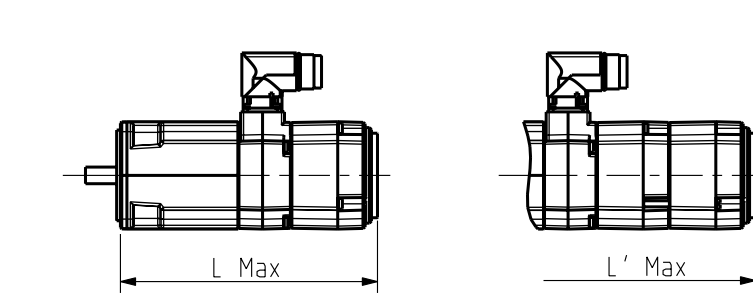
Feedback letter : Y



Scale 1:5

Brake Version

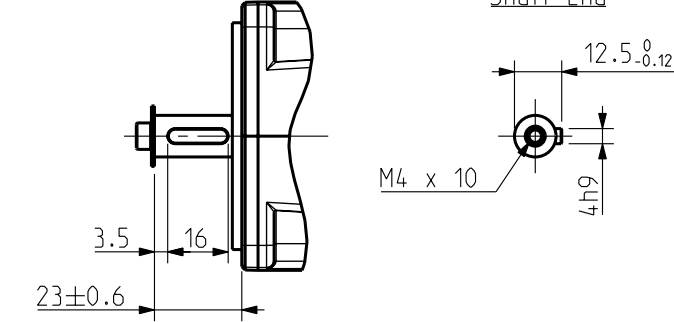
Feedback letter : P/Q



Scale 1:5

Brake Version

Key



Scale 1:2

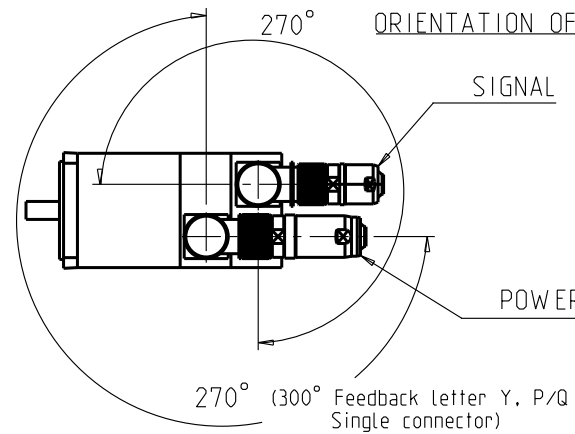
BRAKE Supply voltage : 24V ±10%  
Static torque

|        |        |
|--------|--------|
| 20 °C  | 2 Nm   |
| 100 °C | 1.8 Nm |

Weight

|            |        |
|------------|--------|
|            | NX310  |
| No Brake   | 2 Kg   |
| With Brake | 2.4 Kg |

ORIENTATION OF CONNECTORS



| Feedback options (feedback letter) | Resolver (A) | Low cost encoder (X) | Hiperface SKS36 (R) | Hiperface SKM36 (S) | Endat ECN1113 (V) | Endat EQN1125 (W) |
|------------------------------------|--------------|----------------------|---------------------|---------------------|-------------------|-------------------|
| L (mm)                             |              | 147                  |                     | 182                 |                   | 176               |
| L' (mm)                            |              | 195                  |                     | 230                 |                   | 224               |

| Feedback options (feedback letter) | Hiperface SRS50 (T) | Hiperface SRM50 (U) | Sensorless (Y) | Hiperface DSL SIL2 EKS36 (P) | Hiperface DSL SIL2 EKM36 (Q) |
|------------------------------------|---------------------|---------------------|----------------|------------------------------|------------------------------|
| L (mm)                             |                     | 173                 | 147            |                              | 171                          |
| L' (mm)                            |                     | 221                 | 195            |                              | 219                          |

N X 3 1 0 E \_ \_ R 7

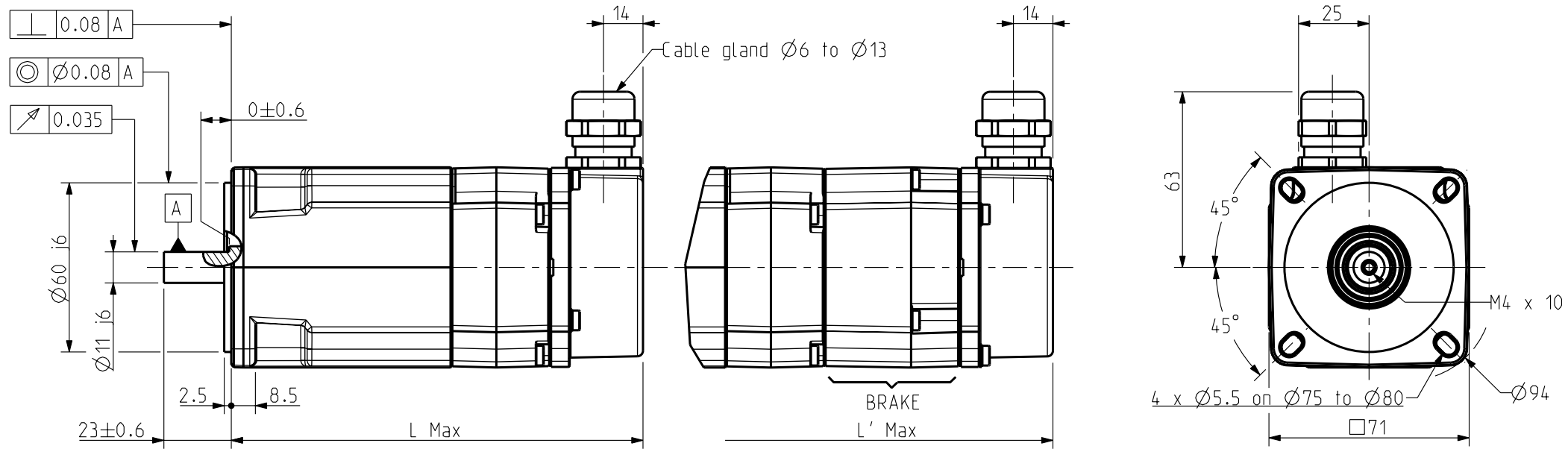
- Torque range (depends on length)
- Winding (depends on speed)
- 0 : Plain Shaft
- 1 : key
- 0 : IP 64
- 1 : IP 65
- 0 : Without Brake
- 3 : Brake
- \* : Thermal protection options on drawing 344993
- A : Resolver
- P : Hiperface Singleturn DSL SIL2 EKS36
- Q : Hiperface Multiturn DSL SIL2 EKM36
- R : Hiperface Singleturn SKS36
- S : Hiperface Multiturn SKM36
- T : Hiperface Singleturn SRS50
- U : Hiperface Multiturn SRM50
- V : Endat Singleturn ECN1113
- W : Endat Multiturn EQN1125
- X : Low Cost Encoder
- Y : Sensorless

See connectors pin out and encoder settings on drawing 344993

Sheet : 1/3

|  |   |                               |                  |  |              |                  |                  |          |               |          |                              |                              |                              |                              |                          |
|--|---|-------------------------------|------------------|--|--------------|------------------|------------------|----------|---------------|----------|------------------------------|------------------------------|------------------------------|------------------------------|--------------------------|
| <p>THIS DOCUMENT CONTAINS INFORMATION THAT IS CONFIDENTIAL AND PROPRIETARY TO PARKER-HANNIFIN CORPORATION. THIS DOCUMENT IS FURNISHED ON THE UNDERSTANDING THAT THE DOCUMENT AND THE INFORMATION IT CONTAINS WILL NOT BE COPIED OR DISCLOSED TO OTHERS OR USED FOR ANY PURPOSE OTHER THAN CONDUCTING BUSINESS WITH PARKER-HANNIFIN CORPORATION, AND WILL BE RETURNED AND ALL FURTHER USE DISCONTINUED UPON REQUEST BY PARKER-HANNIFIN CORPORATION. THE RECIPIENT OF THIS DOCUMENT THROUGH ITS OWN ANALYSIS AND TESTING IS SOLELY RESPONSIBLE FOR MAKING THE FINAL SELECTION OF THE APPLICABLE SYSTEM AND COMPONENTS AND ASSURING THAT ALL PERFORMANCE, DURABLE, MAINTENANCE, SAFETY AND WARNING REQUIREMENTS OF THE APPLICATION ARE MET. COPYRIGHT PARKER-HANNIFIN CORPORATION. YEAR OF COPYRIGHT IS FIRST YEAR INDICATED ON THIS DOCUMENT. ALL RIGHTS RESERVED.</p> | <p>General tolerances<br/>DIN ISO 2768 mK</p> | <p>Drawn 03/07/09 YG Visa</p> | <p>Scale 1:2</p> | <p>4 boulevard Eiffel - CS 40090<br/>21604 Longvic Cedex - France<br/>www.parker.com</p> | <p>NX300</p> | <p>Format A3</p> | <p>F E S G I</p> | <p>x</p> | <p>344167</p> | <p>D</p> |                              |                              |                              |                              |                          |
|  |   | <p>Modifications</p>          |                  |  |              |                  |                  |          |               |          | <p>C AM24108 22/04/13 SD</p> | <p>B AM23403 10/05/10 OD</p> | <p>A AM23337 15/02/10 OD</p> | <p>D AM24474 01/12/15 PR</p> | <p>CONNECTOR VARIANT</p> |
|  |   | <p>General tolerances</p>     |                  |  |              |                  |                  |          |               |          | <p>AM24108 22/04/13 SD</p>   | <p>AM23403 10/05/10 OD</p>   | <p>AM23337 15/02/10 OD</p>   | <p>AM24474 01/12/15 PR</p>   | <p>CONNECTOR VARIANT</p> |

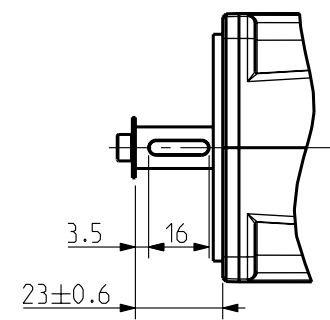
Feedback letter : Y



Scale 1:2

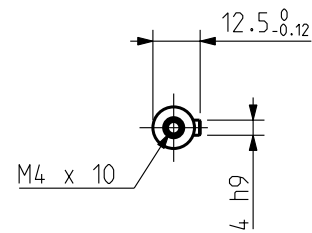
Brake Version

Key



Scale 1:2

Shaft End



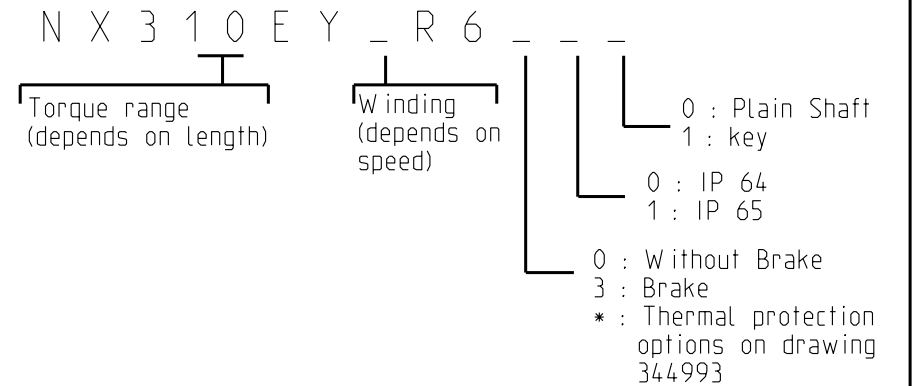
BRAKE Supply voltage : 24V ±10%  
Static torque

|        |        |
|--------|--------|
| 20 °C  | 2 Nm   |
| 100 °C | 1.8 Nm |

Weight

|            |        |
|------------|--------|
|            | NX310  |
| No Brake   | 2 Kg   |
| With Brake | 2.4 Kg |

| Feedback option (feedback letter) | Sensorless (Y) |
|-----------------------------------|----------------|
| L (mm)                            | 147            |
| L' (mm)                           | 195            |



See connectors pin out and encoder settings on drawing 344993

Sheet : 2/3

General tolerances  
DIN ISO 2768 mk

|               |          |                     |      |   |                     |  |  |  |
|---------------|----------|---------------------|------|---|---------------------|--|--|--|
| Drawn         | 03/07/09 | YG                  | Visa |   |                     |  |  |  |
| Modifications | C        | AM24108 22/04/13 SD |      |   |                     |  |  |  |
|               | B        | AM23403 10/05/10 OD |      |   |                     |  |  |  |
|               | A        | AM23337 15/02/10 OD |      | D | AM24474 01/12/15 PR |  |  |  |

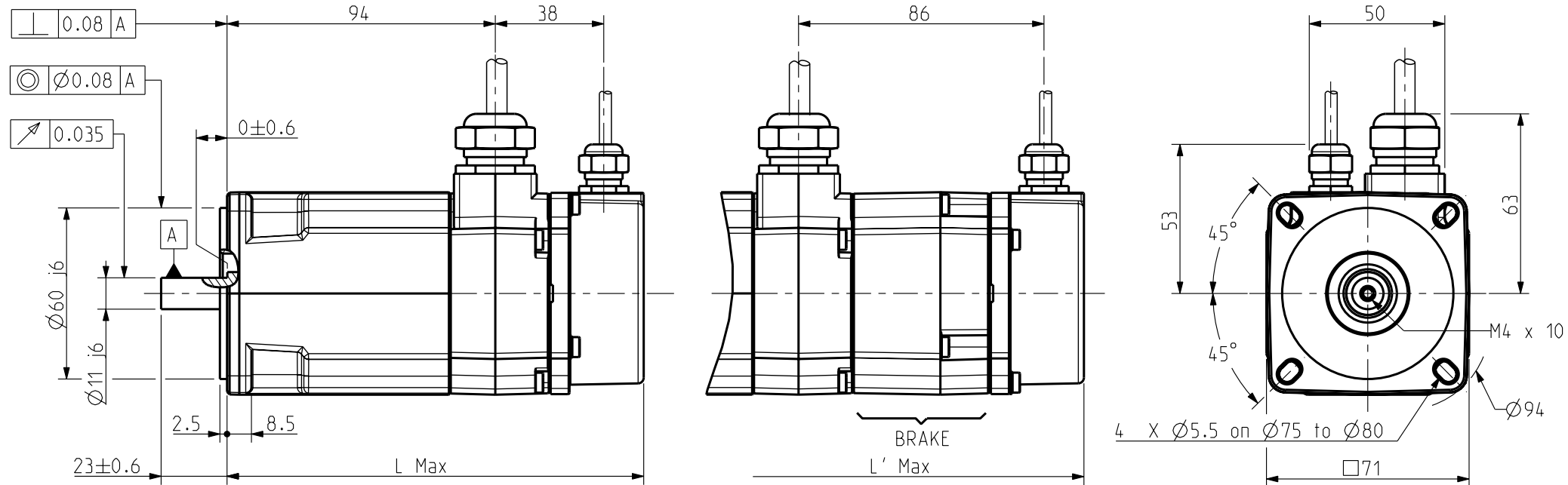
Scale 1:2

4 boulevard Eiffel - CS 40090  
21604 Longvic Cedex - France  
www.parker.com

NX300  
SENSORLESS VARIANT

|        |   |   |   |   |   |
|--------|---|---|---|---|---|
| Format | F | E | S | G | I |
| A3     | x |   |   |   |   |
| 344167 |   |   |   |   |   |

Feedback letter : A/X

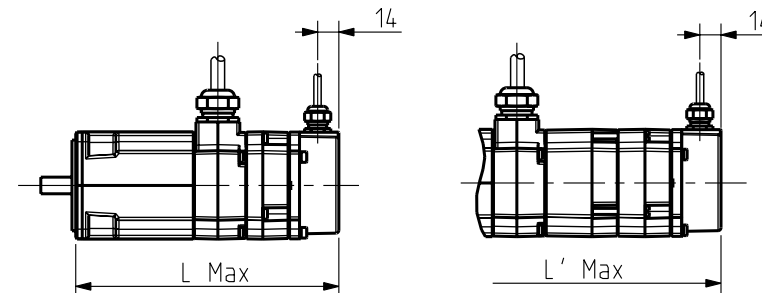


Scale 1:2

Brake Version

FEEDBACK OPTIONS

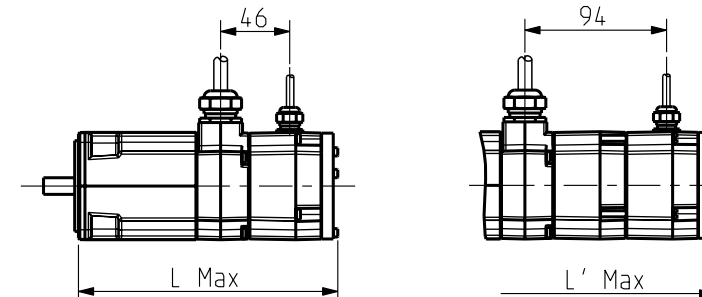
Feedback letter : R/S/V/W



Scale 1:5

Brake Version

Feedback letter : T/U



Scale 1:5

Brake Version

Key

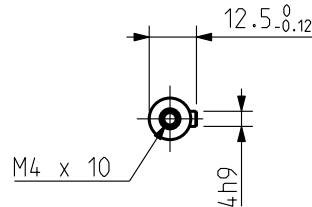
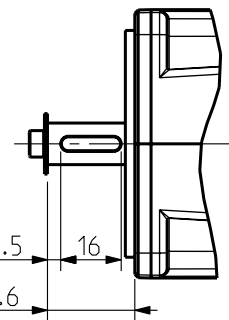
Shaft End

BRAKE Supply voltage : 24V ±10%  
Static torque

|        |        |
|--------|--------|
| 20 °C  | 2 Nm   |
| 100 °C | 1.8 Nm |

Weight

|            |        |
|------------|--------|
|            | NX310  |
| No Brake   | 2 Kg   |
| With Brake | 2.4 Kg |



Scale 1:2

| Feedback options (feedback letter) | Resolver (A) | Low cost encoder (X) | Hiperface SKS36 (R) | Hiperface SKM36 (S) | Endat ECN1113 (V) | Endat EQN1125 (W) | Hiperface SRS50 (T) | Hiperface SRM50 (U) |
|------------------------------------|--------------|----------------------|---------------------|---------------------|-------------------|-------------------|---------------------|---------------------|
| L (mm)                             | 147          |                      | 182                 |                     | 176               |                   | 173                 |                     |
| L' (mm)                            | 195          |                      | 230                 |                     | 224               |                   | 221                 |                     |

N X 3 1 0 E \_ \_ R 1 \_ \_ \_

Torque range (depends on length)

Winding (depends on speed)

0 : Plain Shaft  
1 : key

0 : IP 64  
1 : IP 65

A : Resolver  
R : Hiperface Singleturn SKS36  
S : Hiperface Multiturn SKM36  
T : Hiperface Singleturn SRS50  
U : Hiperface Multiturn SRM50  
V : Endat Singleturn ECN1113  
W : Endat Multiturn EQN1125  
X : Low Cost Encoder

0 : Without Brake  
3 : Brake  
\* : Thermal protection options on drawing 344993

See connectors pin out and encoder settings on drawing 344993

Sheet : 3/3

General tolerances  
DIN ISO 2768 mK

|               |          |         |          |    |   |         |          |    |
|---------------|----------|---------|----------|----|---|---------|----------|----|
| Drawn         | 03/07/09 | YG      | Visa     |    |   |         |          |    |
| Modifications | C        | AM24108 | 22/04/13 | SD |   |         |          |    |
|               | B        | AM23403 | 10/05/10 | OD |   |         |          |    |
|               | A        | AM23337 | 15/02/10 | OD | D | AM24474 | 01/12/15 | PR |

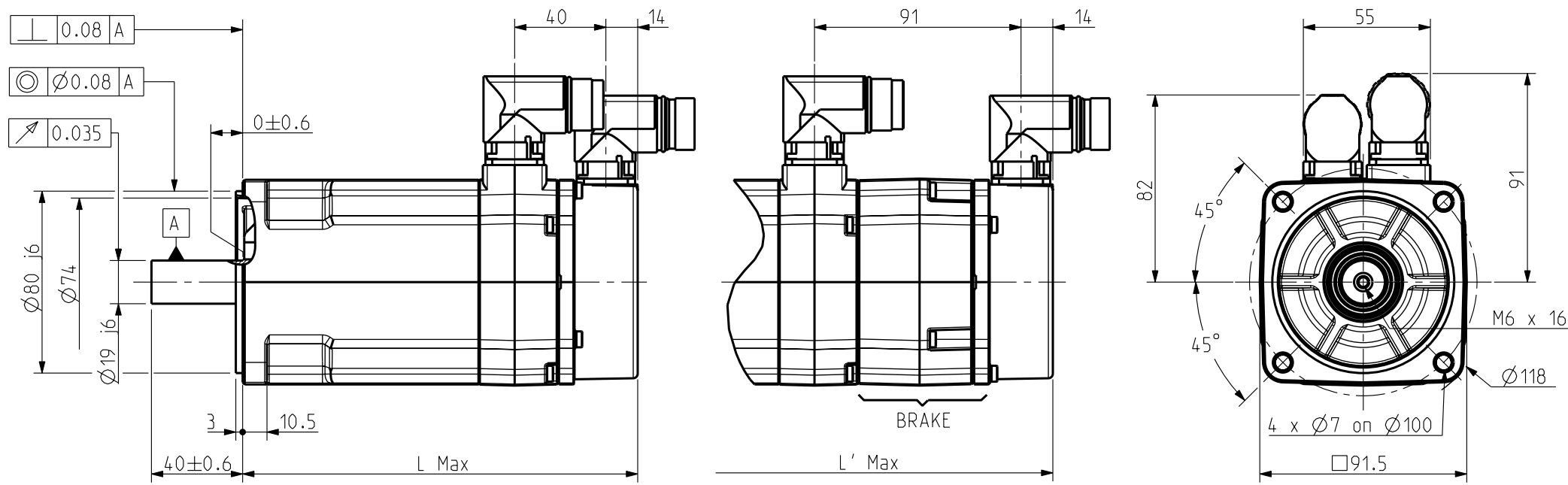
Scale 1:2

4 boulevard Eiffel - CS 40090  
21604 Longvic Cedex - France  
www.parker.com

NX300  
CABLE VARIANT

|        |   |   |   |   |   |
|--------|---|---|---|---|---|
| Format | F | E | S | G | I |
| A3     | x |   |   |   |   |
| 344167 |   |   |   |   |   |

Feedback letter : A/X

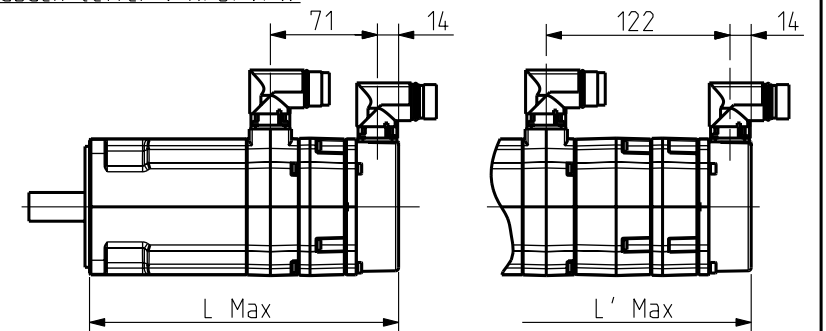


Scale 2:5

Brake Version

FEEDBACK OPTIONS

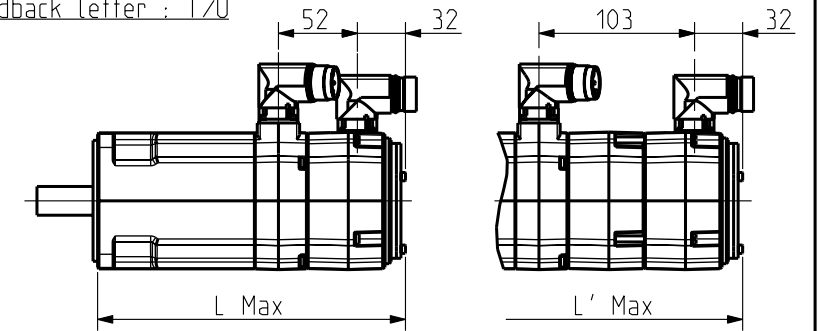
Feedback Letter : R/S/V/W



Scale 1:5

Brake Version

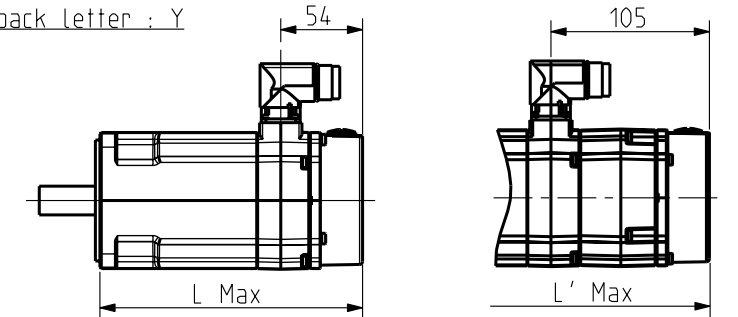
Feedback Letter : T/U



Scale 1:5

Brake Version

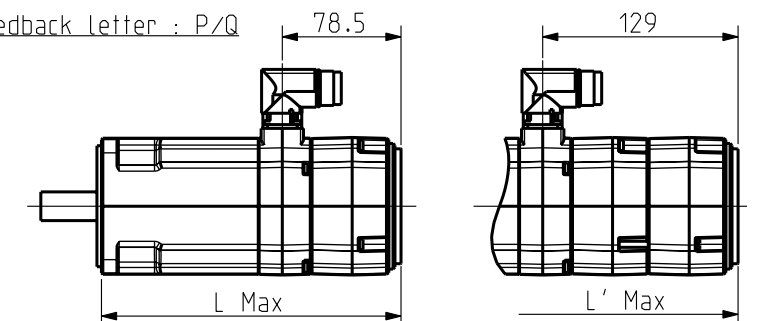
Feedback Letter : Y



Scale 1:5

Brake Version

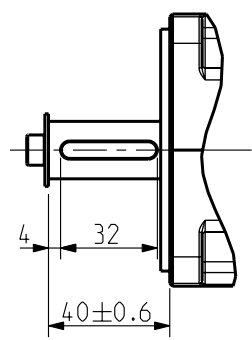
Feedback Letter : P/Q



Scale 1:5

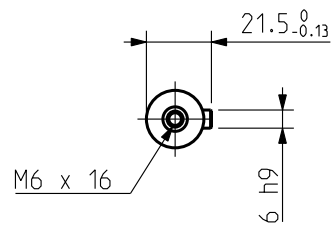
Brake Version

Key



Scale 2:5

Shaft End



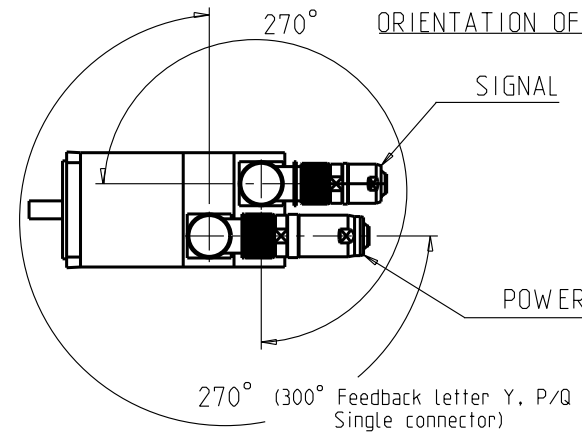
BRAKE Supply voltage : 24V ±10%  
Static torque

|        |        |        |
|--------|--------|--------|
|        | NX420  | NX430  |
| 20 °C  | 5.5 Nm | 5.5 Nm |
| 100 °C | 4 Nm   | 4 Nm   |

Weight

|            |        |        |
|------------|--------|--------|
|            | NX420  | NX430  |
| No Brake   | 3.7 Kg | 4.6 Kg |
| With Brake | 4.5 Kg | 5.4 Kg |

ORIENTATION OF CONNECTORS



|       | Feedback options (feedback letter) | Resolver (A) | Low cost encoder (X) | Hiperface SKS36 (R) | Hiperface SKM36 (S) | Endat ECN1113 (V) | Endat EQN1125 (W) |
|-------|------------------------------------|--------------|----------------------|---------------------|---------------------|-------------------|-------------------|
| NX420 | L (mm)                             |              | 175                  |                     |                     |                   | 206               |
|       | L' (mm)                            |              | 226                  |                     |                     |                   | 261               |
| NX430 | L (mm)                             |              | 200                  |                     |                     |                   | 231               |
|       | L' (mm)                            |              | 251                  |                     |                     |                   | 286               |

|       | Feedback options (feedback letter) | Hiperface SRS50 (T) | Hiperface SRM50 (U) | Sensorless (Y) | Hiperface DSL SIL2 EKS36 (P) | Hiperface DSL SIL2 EKM36 (Q) |
|-------|------------------------------------|---------------------|---------------------|----------------|------------------------------|------------------------------|
| NX420 | L (mm)                             |                     | 205                 | 175            |                              | 199.5                        |
|       | L' (mm)                            |                     | 256                 | 226            |                              | 250.5                        |
| NX430 | L (mm)                             |                     | 230                 | 200            |                              | 224.5                        |
|       | L' (mm)                            |                     | 281                 | 251            |                              | 275.5                        |

N X 4 \_ \_ E \_ \_ R 7 \_ \_ \_

Torque range (depends on length)

Winding (depends on speed)

0 : Plain Shaft  
1 : key

0 : IP 64  
1 : IP 65

0 : Without Brake  
3 : Brake  
\* : Thermal protection options on drawing 344993

A : Resolver  
P : Hiperface Singleturn DSL SIL2 EKS36  
Q : Hiperface Multiturn DSL SIL2 EKM36  
R : Hiperface Singleturn SKS36  
S : Hiperface Multiturn SKM36  
T : Hiperface Singleturn SRS50  
U : Hiperface Multiturn SRM50  
V : Endat Singleturn ECN1113  
W : Endat Multiturn EQN1125  
X : Low Cost Encoder  
Y : Sensorless

See connectors pin out and encoder settings on drawing 344993

Sheet : 1/4

THIS DOCUMENT CONTAINS INFORMATION THAT IS CONFIDENTIAL AND PROPRIETARY TO PARKER-HANNIFIN CORPORATION. THIS DOCUMENT IS FURNISHED ON THE UNDERSTANDING THAT THE DOCUMENT AND THE INFORMATION IT CONTAINS WILL NOT BE COPIED OR DISCLOSED TO OTHERS OR USED FOR ANY PURPOSE OTHER THAN CONDUCTING BUSINESS WITH PARKER-HANNIFIN CORPORATION, AND WILL BE RETURNED AND ALL FURTHER USE DISCONTINUED UPON REQUEST BY PARKER-HANNIFIN CORPORATION. THE RECIPIENT OF THIS DOCUMENT THROUGH ITS OWN MAINTENANCE AND TESTING IS SOLELY RESPONSIBLE FOR MAKING THE FINAL SELECTION OF THE APPLICABLE SYSTEM AND COMPONENTS AND ASSURING THAT ALL PERFORMANCE, DURABILITY, MAINTENANCE, SAFETY AND WARNING REQUIREMENTS OF THE APPLICATION ARE MET. COPYRIGHT PARKER-HANNIFIN CORPORATION. YEAR OF COPYRIGHT IS FIRST YEAR INDICATED ON THIS DOCUMENT. ALL RIGHTS RESERVED.

General tolerances  
DIN ISO 2768 mK

|               |          |         |          |    |   |         |             |
|---------------|----------|---------|----------|----|---|---------|-------------|
| Drawn         | 03/07/09 | OD      | Visa     |    |   |         |             |
| Modifications | C        | AM24108 | 22/04/13 | SD |   |         |             |
|               | B        | AM23403 | 10/05/10 | OD | E | AM24474 | 01/12/15 PR |
|               | A        | AM23337 | 15/02/10 | OD | D | AM24229 | 03/12/13 AH |

Scale  
2:5

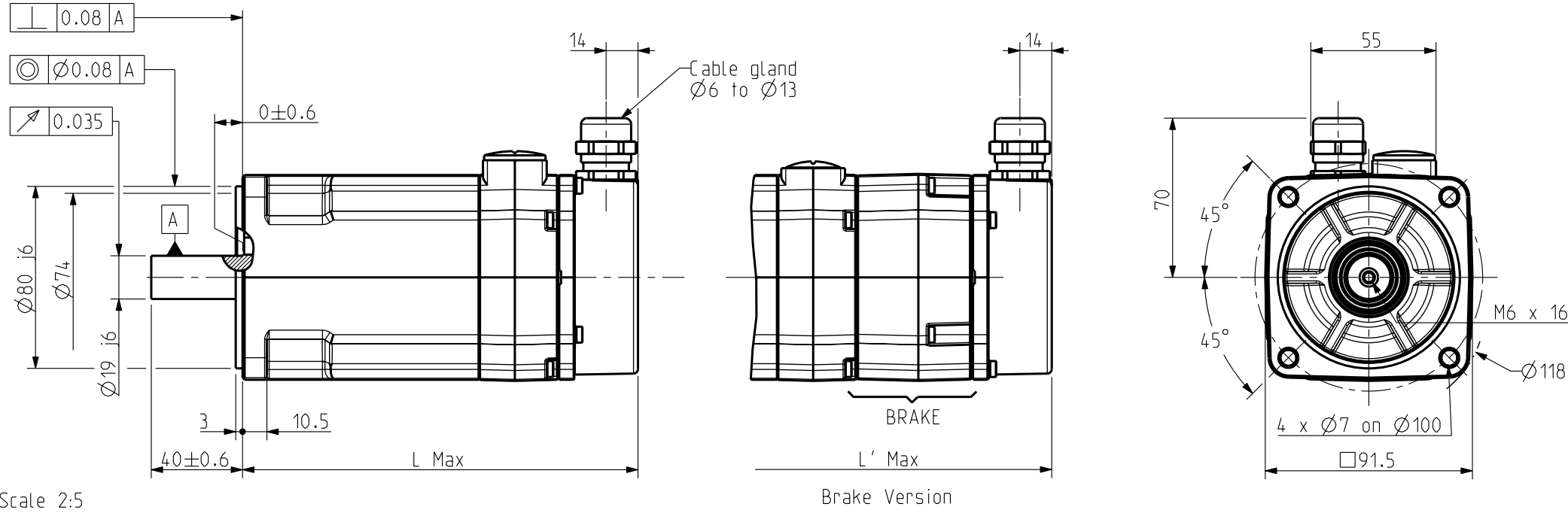


4 boulevard Eiffel - CS 40090  
21604 Longvic Cedex - France  
www.parker.com

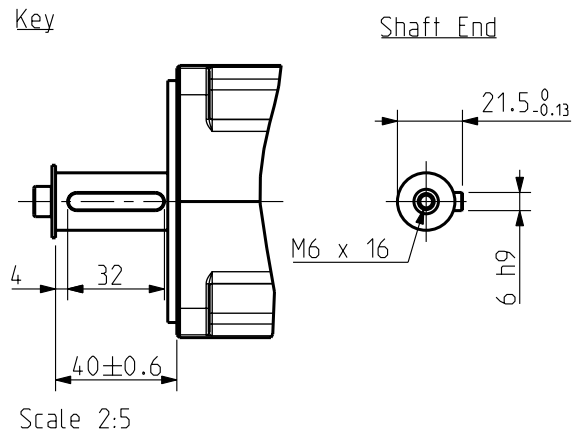
NX400  
CONNECTOR VARIANT

|        |   |   |   |   |   |
|--------|---|---|---|---|---|
| Format | F | E | S | G | I |
| A3     | x |   |   |   |   |
|        |   |   |   |   | E |

Feedback letter : Y



Scale 2:5



Scale 2:5

**BRAKE** Supply voltage : 24V  $\pm 10\%$   
Static torque

|        | NX420  | NX430  |
|--------|--------|--------|
| 20 °C  | 5.5 Nm | 5.5 Nm |
| 100 °C | 4 Nm   | 4 Nm   |

Weight

|            | NX420  | NX430  |
|------------|--------|--------|
| No Brake   | 3.7 Kg | 4.6 Kg |
| With Brake | 4.5 Kg | 5.4 Kg |

|       | Feedback options (feedback letter) | Sensorless (Y) |
|-------|------------------------------------|----------------|
| NX420 | L (mm)                             | 175            |
|       | L' (mm)                            | 226            |
| NX430 | L (mm)                             | 200            |
|       | L' (mm)                            | 251            |

N X 4 \_ \_ E Y \_ R 6 \_ \_ \_

Torque range (depends on length)

Winding (depends on speed)

0 : Plain Shaft  
1 : key  
0 : IP 64  
1 : IP 65  
0 : Without Brake  
3 : Brake  
\* : Thermal protection options on drawing 344993

See connectors pin out and encoder settings on drawing 344993

Sheet : 2/4

General tolerances  
DIN ISO 2768 mK

| Drawn         | 03/07/09              | OD                    | Visa |
|---------------|-----------------------|-----------------------|------|
| Modifications | C AM24108 22/04/13 SD |                       |      |
|               | B AM23403 10/05/10 OD | E AM24474 01/12/15 PR |      |
|               | A AM23337 15/02/10 OD | D AM24229 03/12/13 AH |      |

Scale 2:5

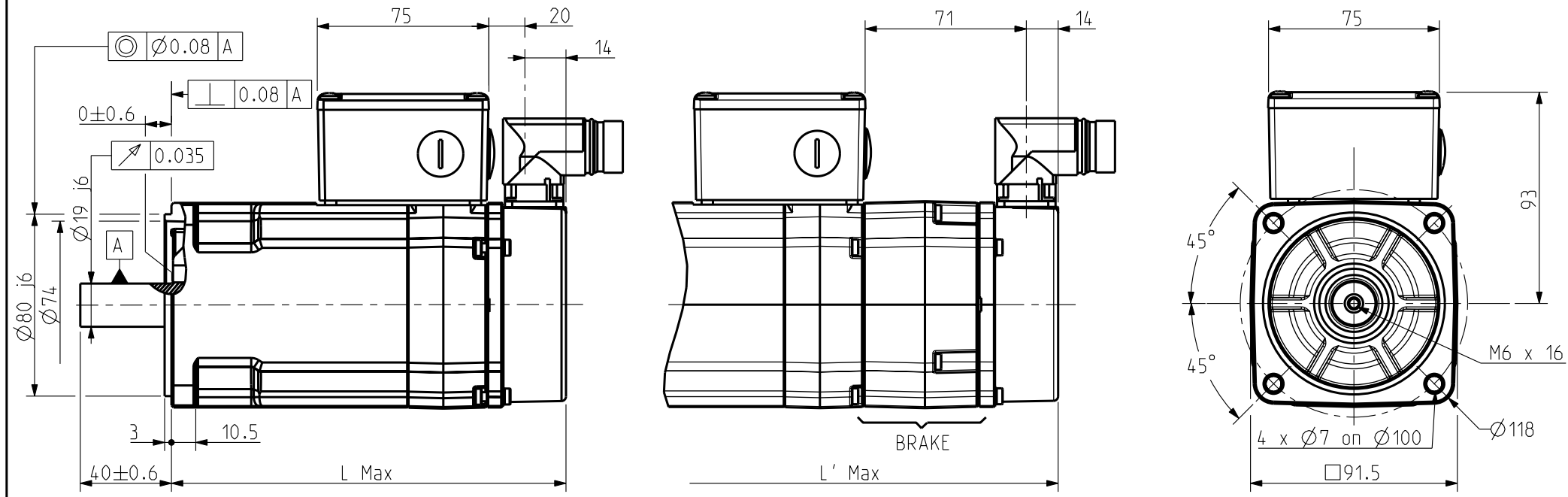
4 boulevard Eiffel - CS 40090  
21604 Longvic Cedex - France  
www.parker.com

NX400  
SENSORLESS VARIANT

| Format | F | E | S | G | I |
|--------|---|---|---|---|---|
| A3     |   | x |   |   |   |

344178

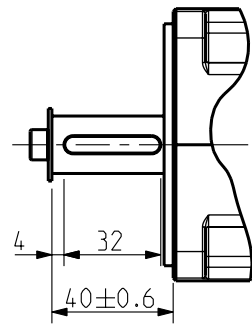
Feedback letter : A/X



Scale 2:5

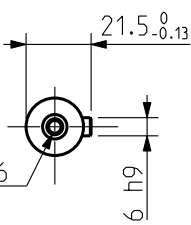
Brake Version

Key



Scale 2:5

Shaft End



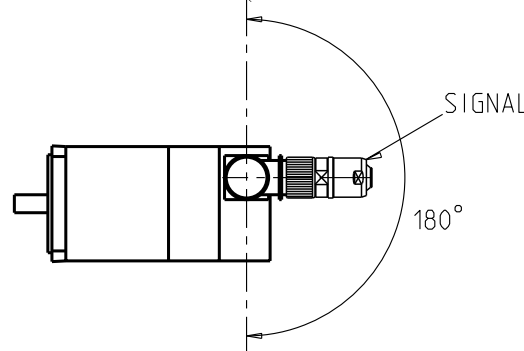
**BRAKE** Supply voltage : 24V ±10%  
Static torque

|        |        |        |
|--------|--------|--------|
|        | NX420  | NX430  |
| 20 °C  | 5.5 Nm | 5.5 Nm |
| 100 °C | 4 Nm   | 4 Nm   |

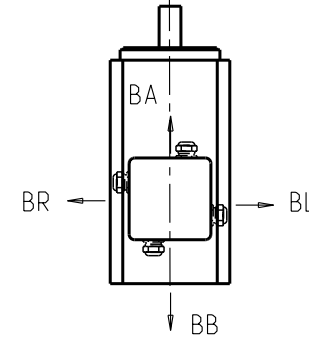
Weight

|            |        |        |
|------------|--------|--------|
|            | NX420  | NX430  |
| No Brake   | 3.7 Kg | 4.6 Kg |
| With Brake | 4.5 Kg | 5.4 Kg |

ORIENTATION OF CONNECTOR



POWER TERMINAL BOX ORIENTATION



Standard orientation : BR

|       | Feedback options (feedback letter) | Resolver (A) | Low cost encoder (X) |
|-------|------------------------------------|--------------|----------------------|
| NX420 | L (mm)                             | 175          |                      |
|       | L' (mm)                            | 226          |                      |
| NX430 | L (mm)                             | 200          |                      |
|       | L' (mm)                            | 251          |                      |

N X 4 \_ \_ E \_ \_ R 6 \_ \_ \_

Torque range (depends on length)

Winding (depends on speed)

0 : Plain Shaft  
1 : key

0 : IP 64  
1 : IP 65

A : Resolver  
X : Low Cost Encoder

0 : Without Brake  
3 : Brake  
\* : Thermal protection options on drawing 344993

See connectors pin out and encoder settings on drawing 344993

Sheet : 3/4

General tolerances  
DIN ISO 2768 mK

|               |          |         |          |    |   |         |             |
|---------------|----------|---------|----------|----|---|---------|-------------|
| Drawn         | 03/07/09 | OD      | Visa     |    |   |         |             |
| Modifications | C        | AM24108 | 22/04/13 | SD |   |         |             |
|               | B        | AM23403 | 10/05/10 | OD | E | AM24474 | 01/12/15 PR |
|               | A        | AM23337 | 15/02/10 | OD | D | AM24229 | 03/12/13 AH |

Scale 2:5

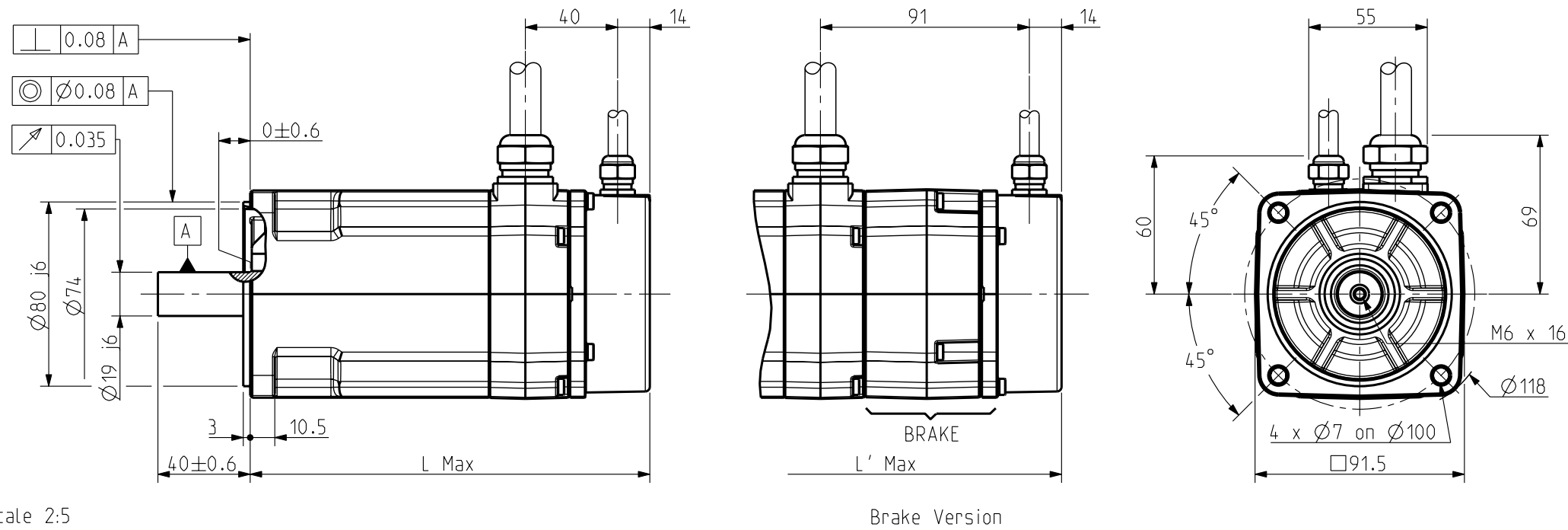
4 boulevard Eiffel - CS 40090  
21604 Longvic Cedex - France  
www.parker.com

NX400  
TERMINAL BOX VARIANT

|        |   |   |   |   |   |
|--------|---|---|---|---|---|
| Format | F | E | S | G | I |
| A3     |   | x |   |   |   |
| 344178 |   |   |   |   |   |

E

Feedback letter : A/X

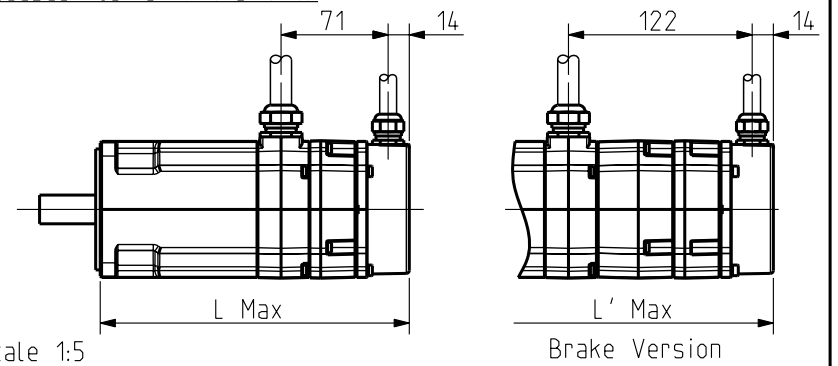


Scale 2:5

Brake Version

FEEDBACK OPTIONS

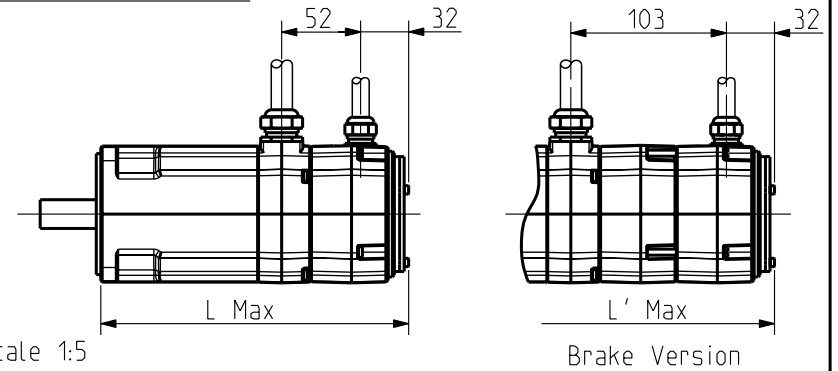
Feedback letter : R/S/V/W



Scale 1:5

Brake Version

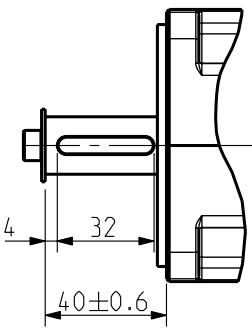
Feedback letter : T/U



Scale 1:5

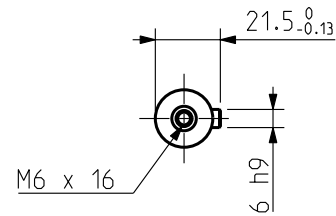
Brake Version

Key



Scale 2:5

Shaft End



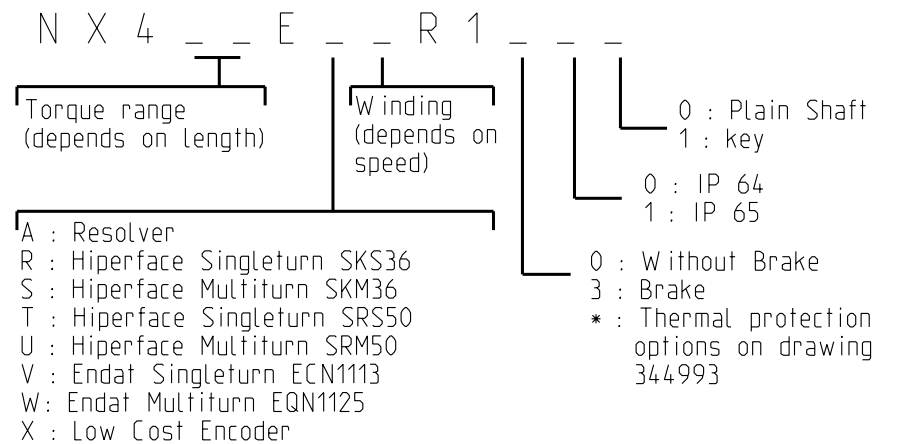
**BRAKE** Supply voltage : 24V ±10%  
Static torque

|        |        |        |
|--------|--------|--------|
|        | NX420  | NX430  |
| 20 °C  | 5.5 Nm | 5.5 Nm |
| 100 °C | 4 Nm   | 4 Nm   |

Weight

|            |        |        |
|------------|--------|--------|
|            | NX420  | NX430  |
| No Brake   | 3.7 Kg | 4.6 Kg |
| With Brake | 4.5 Kg | 5.4 Kg |

|       | Feedback options (feedback letter) | Resolver (A) | Low cost encoder (X) | Hiperface SKS36 (R) | Hiperface SKM36 (S) | Endat ECN1113 (V) | Endat EQN1125 (W) | Hiperface SRS50 (T) | Hiperface SRM50 (U) |
|-------|------------------------------------|--------------|----------------------|---------------------|---------------------|-------------------|-------------------|---------------------|---------------------|
| NX420 | L (mm)                             |              | 175                  |                     |                     | 206               |                   |                     | 205                 |
|       | L' (mm)                            |              | 226                  |                     |                     | 261               |                   |                     | 256                 |
| NX430 | L (mm)                             |              | 200                  |                     |                     | 231               |                   |                     | 230                 |
|       | L' (mm)                            |              | 251                  |                     |                     | 286               |                   |                     | 281                 |



See connectors pin out and encoder settings on drawing 344993

Sheet : 4/4

General tolerances  
DIN ISO 2768 mK

|               |          |                     |      |                     |  |  |  |  |
|---------------|----------|---------------------|------|---------------------|--|--|--|--|
| Drawn         | 03/07/09 | OD                  | Visa |                     |  |  |  |  |
| Modifications | C        | AM24108 22/04/13 SD |      |                     |  |  |  |  |
|               | B        | AM23403 10/05/10 OD | E    | AM24474 01/12/15 PR |  |  |  |  |
|               | A        | AM23337 15/02/10 OD | D    | AM24229 03/12/13 AH |  |  |  |  |

Scale 2:5

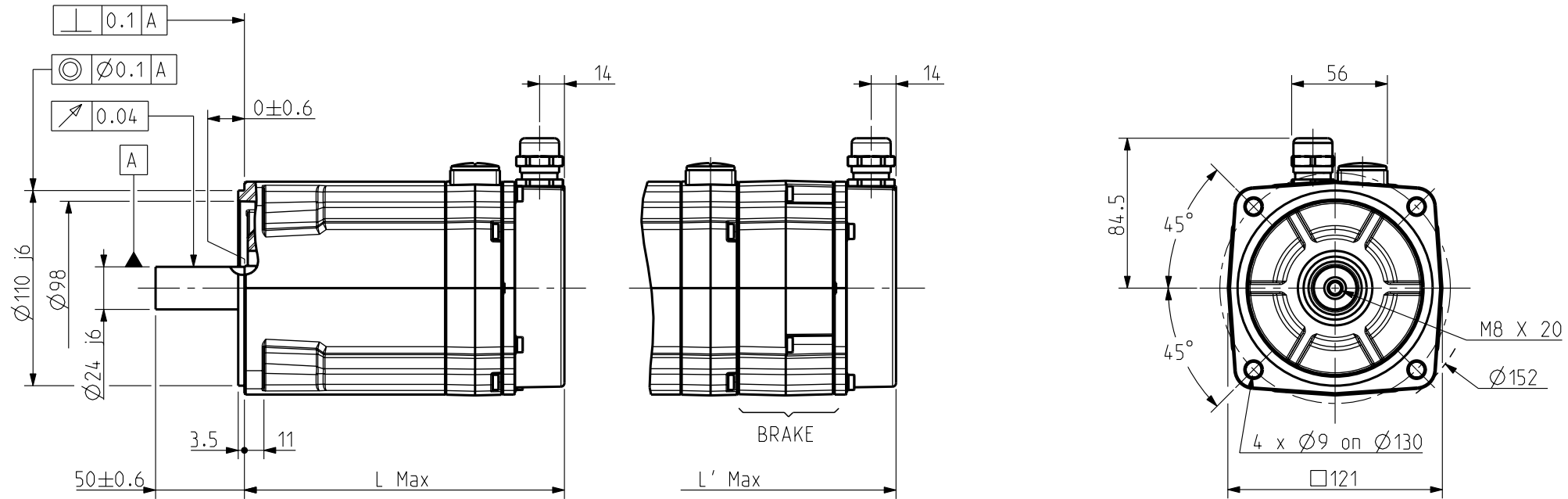
4 boulevard Eiffel - CS 40090  
21604 Longvic Cedex - France  
www.parker.com

NX400  
CABLE VARIANT

|        |   |   |   |   |   |
|--------|---|---|---|---|---|
| Format | F | E | S | G | I |
| A3     | x |   |   |   |   |
| 344178 |   |   |   |   |   |
| E      |   |   |   |   |   |



Feedback letter : Y



Scale 3:10

Brake Version

KEY

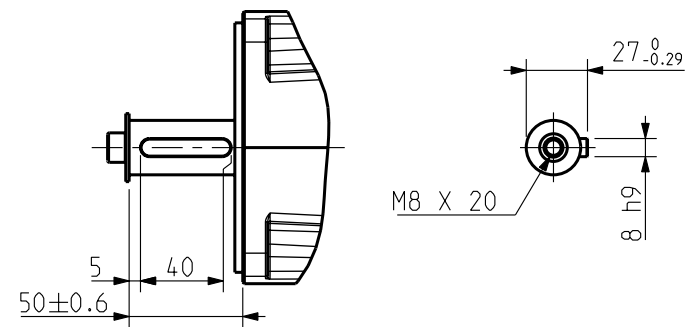
SHAFT END

**BRAKE** Supply voltage : 24V  $\pm 10\%$   
Static torque

|       | NX620 | NX630 |
|-------|-------|-------|
| 20°C  | 12 Nm | 12 Nm |
| 100°C | 8 Nm  | 8 Nm  |

**WEIGHT**

|            | NX620  | NX630  |
|------------|--------|--------|
| No brake   | 6.9 Kg | 8.8 Kg |
| With brake | 8 Kg   | 10 Kg  |



Scale 3:10

|       | Feedback options (feedback letter) | Sensorless (Y) |
|-------|------------------------------------|----------------|
| NX620 | L (mm)                             | 181            |
|       | L' (mm)                            | 236            |
| NX630 | L (mm)                             | 210            |
|       | L' (mm)                            | 265            |

N X 6 \_ \_ E Y \_ R 6 \_ \_ \_

Torque range (depends on length)      Winding (depends on speed)

0 : Plain Shaft  
1 : key  
0 : IP 64  
1 : IP 65  
0 : Without Brake

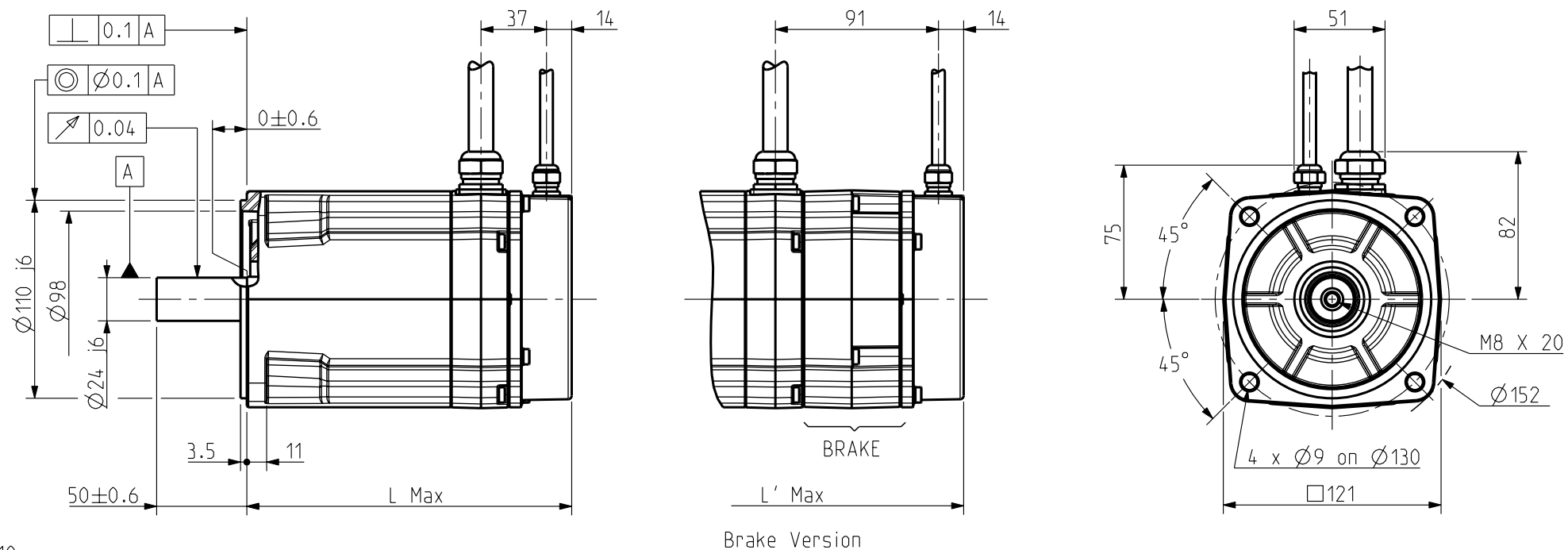
\* : Thermal protection options on drawing 344993

See connectors pin out and encoder settings on drawing 344993

sheet : 2/3

|   |   |  |               |   |                                 |                       |           |        |   |
|---|---|--|---------------|---|---------------------------------|-----------------------|-----------|--------|---|
| <small>THIS DOCUMENT CONTAINS INFORMATION THAT IS CONFIDENTIAL AND PROPRIETARY TO PARKER-HANNIFIN CORPORATION. THIS DOCUMENT IS FURNISHED ON THE UNDERSTANDING THAT THE DOCUMENT AND THE INFORMATION IT CONTAINS WILL NOT BE COPIED OR DISCLOSED TO OTHERS OR USED FOR ANY PURPOSE OTHER THAN CONDUCTING BUSINESS WITH PARKER-HANNIFIN CORPORATION, AND WILL BE RETURNED AND ALL FURTHER USE DISCONTINUED UPON REQUEST BY PARKER-HANNIFIN CORPORATION. THE RECIPIENT OF THIS DOCUMENT THROUGH ITS OWN ANALYSIS AND TESTING IS SOLELY RESPONSIBLE FOR MAKING THE FINAL SELECTION OF THE APPLICABLE SYSTEM AND COMPONENTS AND ASSURING THAT ALL PERFORMANCE, DURABILITY, MAINTENANCE, SAFETY AND WARNING REQUIREMENTS OF THE APPLICATION ARE MET. COPYRIGHT PARKER-HANNIFIN CORPORATION. YEAR OF COPYRIGHT IS FIRST YEAR INDICATED ON THIS DOCUMENT. ALL RIGHTS RESERVED.</small> | General tolerances<br><br>DIN ISO 2768 mk | Drawn 09/07/09 PR Visa   | Scale<br>3:10 | 4 boulevard Eiffel - CS 40090<br>21604 Longvic Cedex - France<br>www.parker.com | NX600<br><br>SENSORLESS VARIANT | Format A3             | F E S G I | 344189 | D |
|   |   | Modifications<br>C AM24229 03/12/13 AH<br>B AM24108 22/04/13 SD<br>A AM23337 15/02/10 OD |               |   |                                 | D AM24474 01/12/15 PR | x         |        |   |
|   |   |  |               |   |                                 |                       |           |        |   |

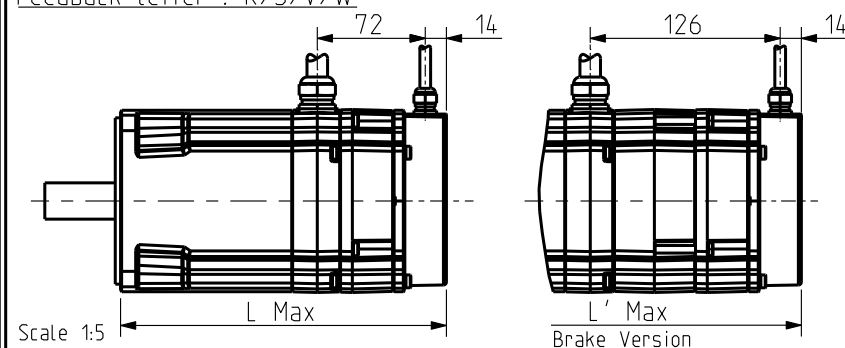
Feedback letter : A/X



Scale 3:10

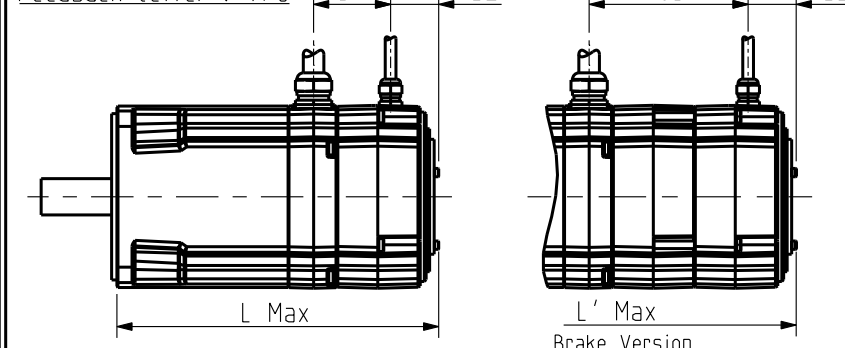
FEEDBACK OPTIONS

Feedback Letter : R/S/V/W



Scale 1:5

Feedback Letter : T/U



Scale 1:5

KEY

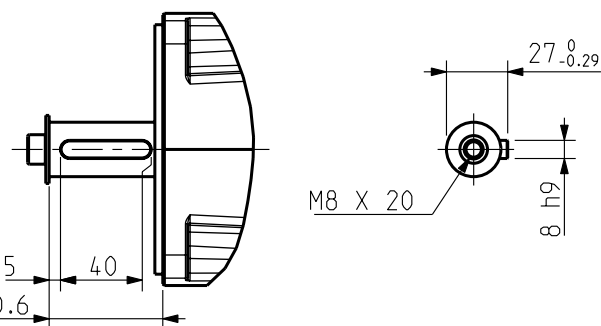
SHAFT END

BRAKE Supply voltage : 24V ±10%  
Static torque

|       |       |       |
|-------|-------|-------|
|       | NX620 | NX630 |
| 20°C  | 12 Nm | 12 Nm |
| 100°C | 8 Nm  | 8 Nm  |

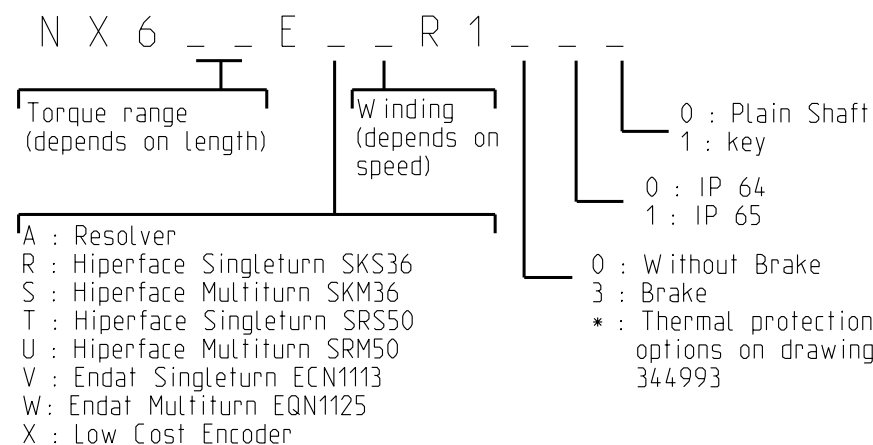
WEIGHT

|            |        |        |
|------------|--------|--------|
|            | NX620  | NX630  |
| No brake   | 6.9 Kg | 8.8 Kg |
| With brake | 8 Kg   | 10 Kg  |



Scale 3:10

|       | Feedback options (feedback letter) | Resolver (A) | Low Cost Encoder (X) | Hiperface SKS36 (R) | Hiperface SKM36 (S) | Endat ECN1113 (V) | Endat EQN1125 (W) | Hiperface SRS50 (T) | Hiperface SRM50 (U) | Sensorless (Y) |
|-------|------------------------------------|--------------|----------------------|---------------------|---------------------|-------------------|-------------------|---------------------|---------------------|----------------|
| NX620 | L (mm)                             | 181          |                      |                     | 216                 |                   |                   | 214                 |                     | 181            |
|       | L' (mm)                            | 236          |                      |                     | 271                 |                   |                   | 269                 |                     | 236            |
| NX630 | L (mm)                             | 210          |                      |                     | 245                 |                   |                   | 243                 |                     | 210            |
|       | L' (mm)                            | 265          |                      |                     | 300                 |                   |                   | 298                 |                     | 265            |

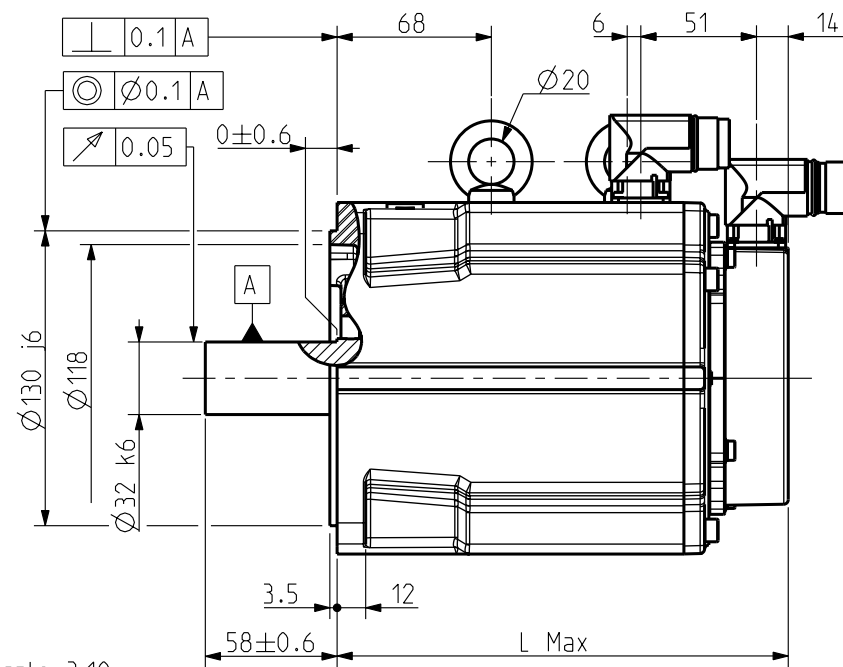


See connectors pin out and encoder settings on drawing 344993

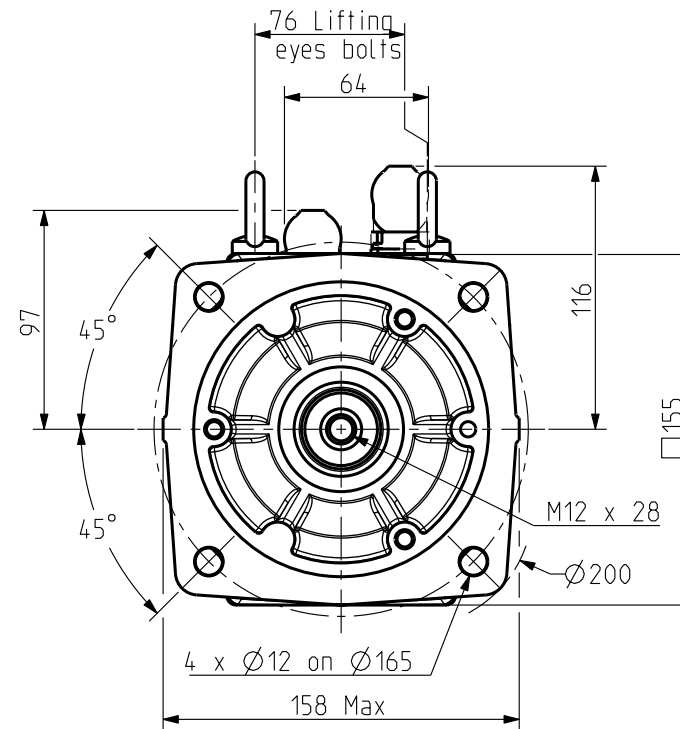
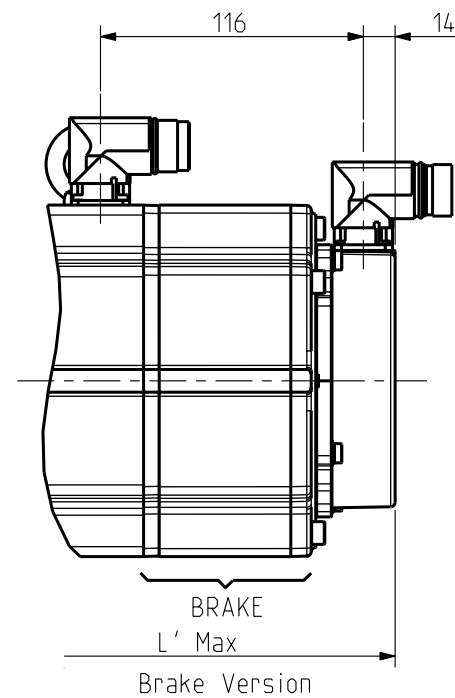
sheet : 3/3

|  |                                       |                           |  |                       |               |   |                        |              |                |        |   |
|--|---------------------------------------|---------------------------|--|-----------------------|---------------|---|------------------------|--------------|----------------|--------|---|
| THIS DOCUMENT CONTAINS INFORMATION THAT IS CONFIDENTIAL AND PROPRIETARY TO PARKER-HANNIFIN CORPORATION. THIS DOCUMENT IS FURNISHED ON THE UNDERSTANDING THAT THE DOCUMENT AND THE INFORMATION IT CONTAINS WILL NOT BE COPIED OR DISCLOSED TO OTHERS OR USED FOR ANY PURPOSE OTHER THAN CONDUCTING BUSINESS WITH PARKER-HANNIFIN CORPORATION, AND WILL BE RETURNED AND ALL FURTHER USE DISCONTINUED UPON REQUEST BY PARKER-HANNIFIN CORPORATION. THE RECIPIENT OF THIS DOCUMENT THROUGH ITS OWN ANALYSIS AND TESTING IS SOLELY RESPONSIBLE FOR MAKING THE FINAL SELECTION OF THE APPLICABLE SYSTEM AND COMPONENTS AND ASSURING THAT ALL PERFORMANCE, DURABILITY, MAINTENANCE, SAFETY AND WARNING REQUIREMENTS OF THE APPLICATION ARE MET. COPYRIGHT PARKER-HANNIFIN CORPORATION. YEAR OF COPYRIGHT IS FIRST YEAR INDICATED ON THIS DOCUMENT. ALL RIGHTS RESERVED. | General tolerances<br>DIN ISO 2768 mK | Drawn<br>09/07/09 PR Visa | Modifications<br>C AM24229 03/12/13 AH<br>B AM24108 22/04/13 SD<br>A AM23337 15/02/10 OD | D AM24474 01/12/15 PR | Scale<br>3:10 | 4 boulevard Eiffel - CS 40090<br>21604 Longvic Cedex - France<br>www.parker.com | NX600<br>CABLE VARIANT | Format<br>A3 | F E S G I<br>x | 344189 | D |
|--|---------------------------------------|---------------------------|--|-----------------------|---------------|---|------------------------|--------------|----------------|--------|---|

Feedback letter : A/X

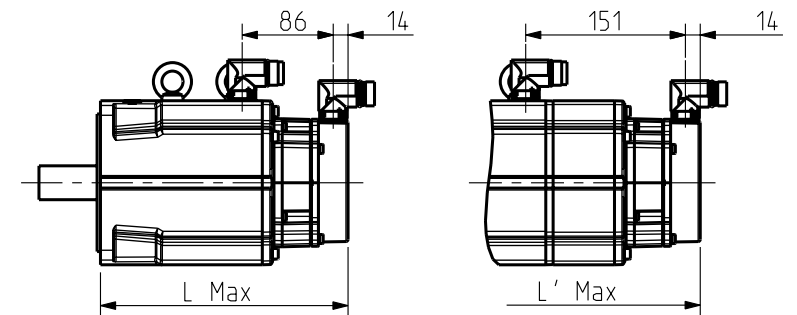


Scale 3:10



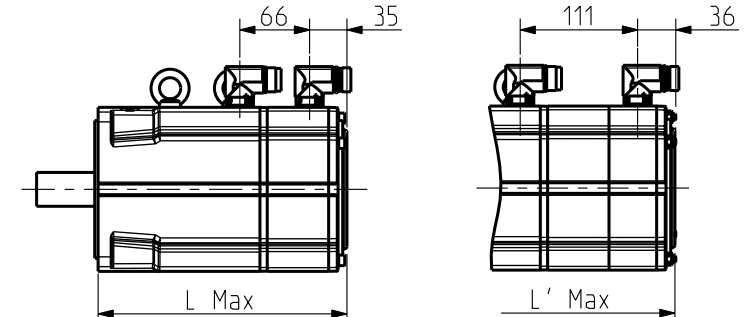
FEEDBACK OPTIONS

Feedback letter : R/S/V/W



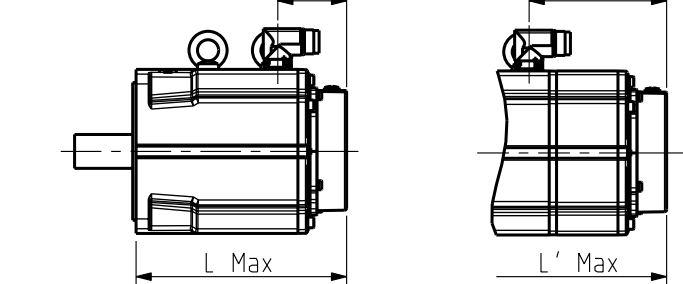
Scale 7:50

Feedback letter : T/U



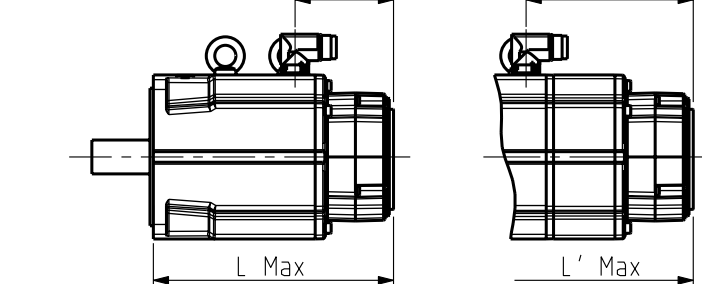
Scale 7:50

Feedback letter : Y



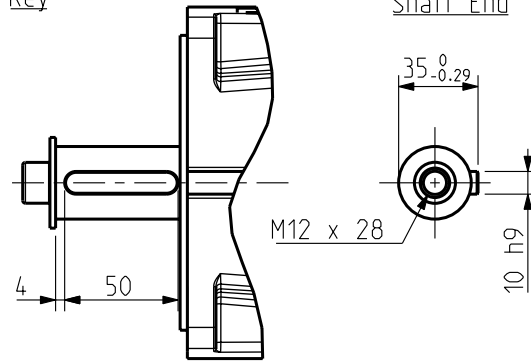
Scale 7:50

Feedback letter : P/Q



Scale 7:50

Key



Scale 3:10

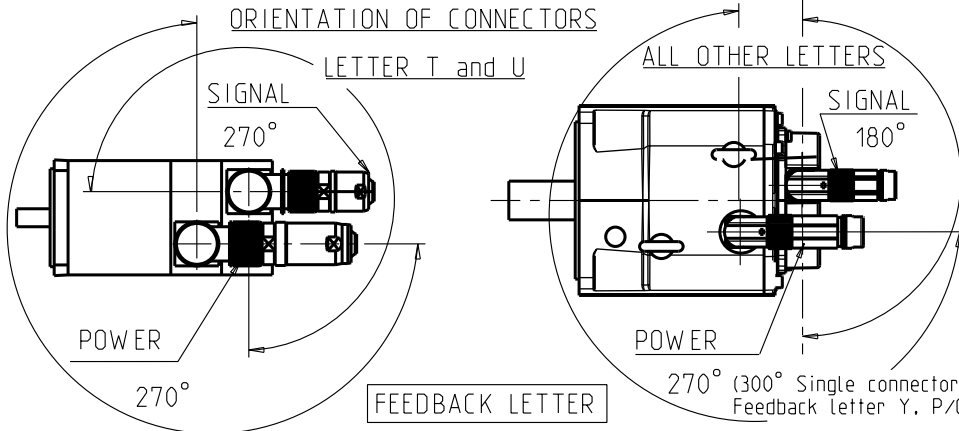
BRAKE Supply voltage : 24V ±10%  
Static torque

|       | NX820 | NX840 | NX860 |
|-------|-------|-------|-------|
| 20°C  | 36 Nm | 36 Nm | 36 Nm |
| 100°C | 32 Nm | 32 Nm | 32 Nm |

Weight

|            | NX820   | NX840   | NX860   |
|------------|---------|---------|---------|
| No Brake   | 13 Kg   | 20 Kg   | 27 Kg   |
| With Brake | 16.5 Kg | 23.5 Kg | 30.5 Kg |

ORIENTATION OF CONNECTORS



N X 8 \_ \_ E \_ \_ R 7

- Torque range (depends on length)
- Winding (depends on speed)
- 0 : Plain Shaft  
1 : key
- 0 : IP 64  
1 : IP 65
- 0 : Without Brake  
3 : Brake
- \* : Thermal protection options on drawing 344993
- A : Resolver
- P : Hiperface Singleturn DSL SIL2 EKS36
- Q : Hiperface Multiturn DSL SIL2 EKM36
- R : Hiperface Singleturn SKS36
- S : Hiperface Multiturn SKM36
- T : Hiperface Singleturn SRS50
- U : Hiperface Multiturn SRM50
- V : Endat Singleturn ECN1113
- W : Endat Multiturn EQN1125
- X : Low Cost Encoder
- Y : Sensorless

See connectors pin out and encoder settings on drawing 344993

|       | Feedback options (feedback letter) | Resolver (A) | Low cost encoder (X) | Hiperface SKS36 (R) | Hiperface SKM36 (S) | Endat ECN1113 (V) | Endat EQN1125 (W) |
|-------|------------------------------------|--------------|----------------------|---------------------|---------------------|-------------------|-------------------|
| NX820 | L (mm)                             | 200          |                      |                     |                     | 235               |                   |
|       | L' (mm)                            | 266          |                      |                     |                     | 301               |                   |
| NX840 | L (mm)                             | 260          |                      |                     |                     | 295               |                   |
|       | L' (mm)                            | 326          |                      |                     |                     | 361               |                   |
| NX860 | L (mm)                             | 320          |                      |                     |                     | 355               |                   |
|       | L' (mm)                            | 386          |                      |                     |                     | 421               |                   |

|       | Feedback options (feedback letter) | Hiperface SRS50 (T) | Hiperface SRM50 (U) | Sensorless (Y) | Hiperface DSL SIL2 EKS36 (P) | Hiperface DSL SIL2 EKM36 (Q) |
|-------|------------------------------------|---------------------|---------------------|----------------|------------------------------|------------------------------|
| NX820 | L (mm)                             | 236                 |                     | 200            |                              | 228                          |
|       | L' (mm)                            | 282                 |                     | 266            |                              | 294                          |
| NX840 | L (mm)                             | 296                 |                     | 260            |                              | 288                          |
|       | L' (mm)                            | 342                 |                     | 326            |                              | 354                          |
| NX860 | L (mm)                             | 356                 |                     | 320            |                              | 348                          |
|       | L' (mm)                            | 402                 |                     | 386            |                              | 414                          |

Sheet:1/4

General tolerances  
DIN ISO 2768 mK

| Drawn         | 09/07/09              | YG                    | Visa |
|---------------|-----------------------|-----------------------|------|
| Modifications | C AM24108 22/04/13 SD |                       |      |
|               | B AM24031 14/12/12 BB |                       |      |
|               | A AM23337 15/02/10 OD | D AM24474 01/12/15 PR |      |

Scale 3:10  
  
 4 boulevard Eiffel - CS 40090  
 21604 Longvic Cedex - France  
 www.parker.com

NX800  
 CONNECTOR VARIANT

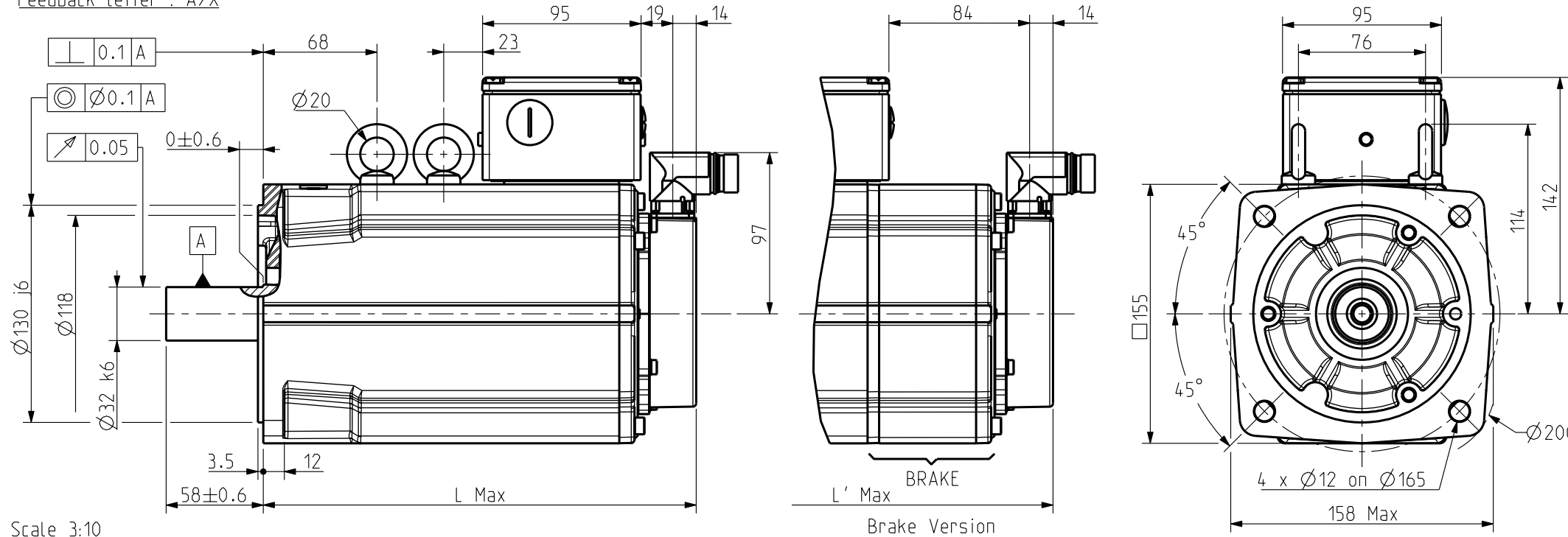
| Format | F | E | S | G | I |
|--------|---|---|---|---|---|
| A3     |   | x |   |   |   |

344469

THIS DOCUMENT CONTAINS INFORMATION THAT IS CONFIDENTIAL AND PROPRIETARY TO PARKER-HANNIFIN CORPORATION. THIS DOCUMENT IS FURNISHED ON THE UNDERSTANDING THAT THE DOCUMENT AND THE INFORMATION IT CONTAINS WILL NOT BE COPIED OR DISCLOSED TO OTHERS OR USED FOR ANY PURPOSE OTHER THAN CONDUCTING BUSINESS WITH PARKER-HANNIFIN CORPORATION, AND WILL BE RETURNED AND ALL FURTHER USE DISCONTINUED UPON REQUEST BY PARKER-HANNIFIN CORPORATION. THE RECIPIENT OF THIS DOCUMENT THROUGH ITS OWN ANALYSIS AND TESTING IS SOLELY RESPONSIBLE FOR MAKING THE FINAL SELECTION OF THE APPLICABLE SYSTEM AND COMPONENTS AND ASSURING THAT ALL PERFORMANCE, DURABILITY, MAINTENANCE, SAFETY AND WARNING REQUIREMENTS OF THE APPLICATION ARE MET. COPYRIGHT PARKER-HANNIFIN CORPORATION. YEAR OF COPYRIGHT IS FIRST YEAR INDICATED ON THIS DOCUMENT. ALL RIGHTS RESERVED.



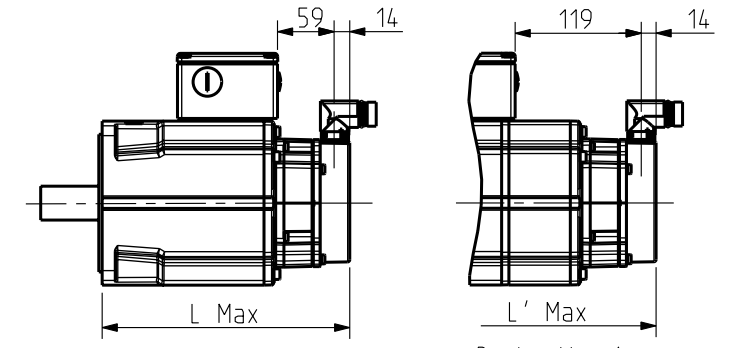
Feedback letter : A/X



Scale 3:10

FEEDBACK OPTIONS

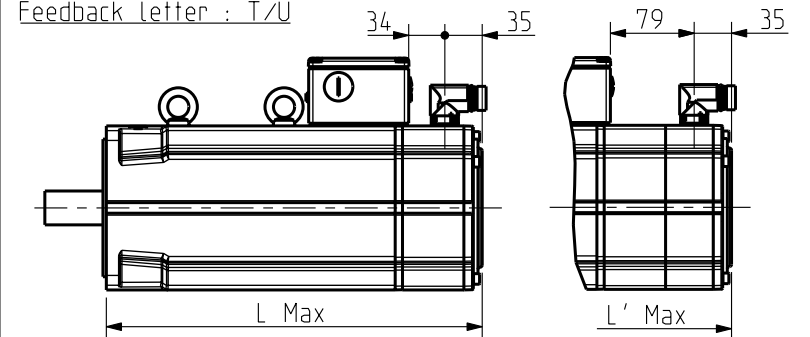
Feedback letter : R/S/V/W



Scale 7:50

Brake Version

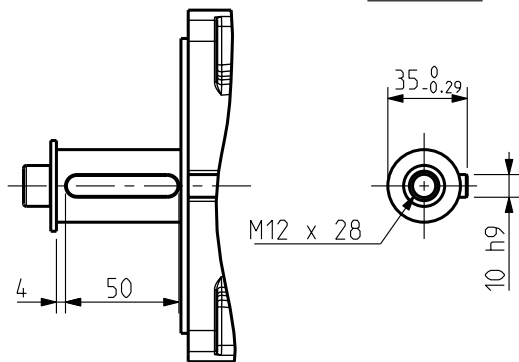
Feedback letter : T/U



Scale 7:50

Brake Version

Key



Scale 3:10

Shaft End

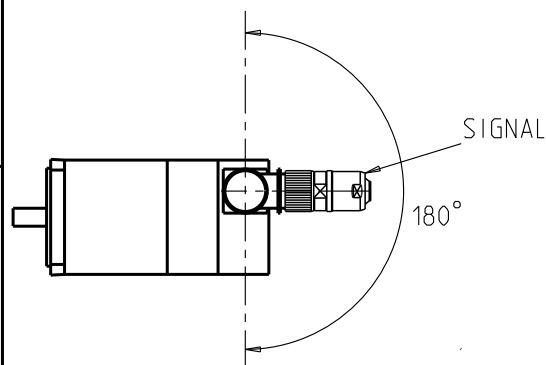
BRAKE Supply voltage : 24V ±10%  
Static torque

|        |       |       |       |
|--------|-------|-------|-------|
|        | NX820 | NX840 | NX860 |
| 20 °C  | 36 Nm | 36 Nm | 36 Nm |
| 100 °C | 32 Nm | 32 Nm | 32 Nm |

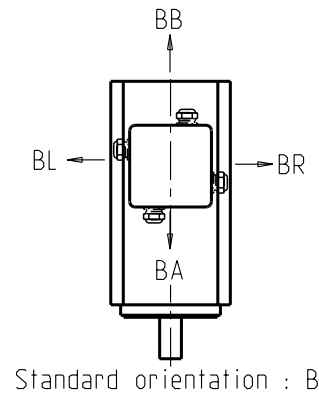
Weight

|            |         |         |         |
|------------|---------|---------|---------|
|            | NX820   | NX840   | NX860   |
| No Brake   | 13.5 Kg | 20.5 Kg | 27.5 Kg |
| With Brake | 17 Kg   | 24 Kg   | 31 Kg   |

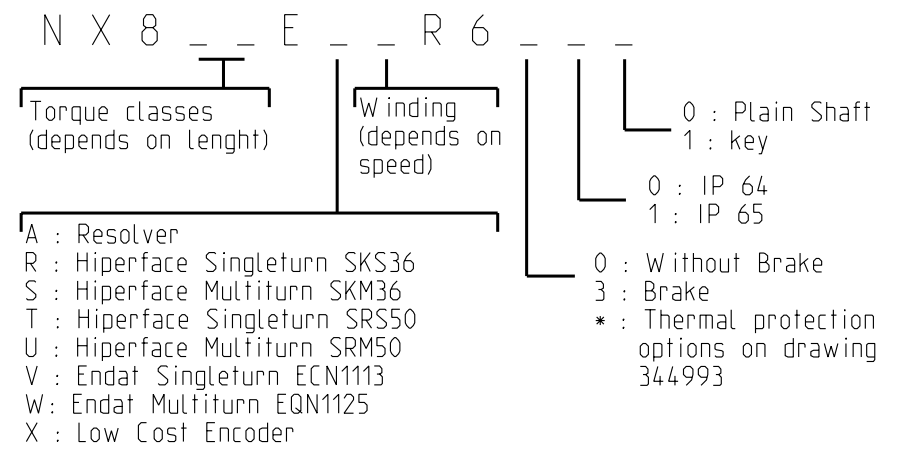
ORIENTATION OF CONNECTOR



POWER TERMINAL BOX ORIENTATION



|       | Feedback options (feedback letter) | Resolver (A) | Low cost encoder (X) | Hiperface SKS36 (R) | Hiperface SKM36 (S) | Endat ECN1113 (V) | Endat EQN1125 (W) | Hiperface SRS50 (T) | Hiperface SRM50 (U) |
|-------|------------------------------------|--------------|----------------------|---------------------|---------------------|-------------------|-------------------|---------------------|---------------------|
| NX820 | L (mm)                             | 200          |                      |                     | 235                 |                   |                   | 236                 |                     |
|       | L' (mm)                            | 266          |                      |                     | 301                 |                   |                   | 282                 |                     |
| NX840 | L (mm)                             | 260          |                      |                     | 295                 |                   |                   | 296                 |                     |
|       | L' (mm)                            | 326          |                      |                     | 361                 |                   |                   | 342                 |                     |
| NX860 | L (mm)                             | 320          |                      |                     | 355                 |                   |                   | 356                 |                     |
|       | L' (mm)                            | 386          |                      |                     | 421                 |                   |                   | 402                 |                     |



See connectors pin out and encoder settings on drawing 344993

General tolerances  
DIN ISO 2768 mK

|               |          |                     |      |   |                     |  |  |  |
|---------------|----------|---------------------|------|---|---------------------|--|--|--|
| Drawn         | 09/07/09 | YG                  | Visa |   |                     |  |  |  |
| Modifications | C        | AM24108 22/04/13 SD |      |   |                     |  |  |  |
|               | B        | AM24031 14/12/12 BB |      |   |                     |  |  |  |
|               | A        | AM23337 15/02/10 OD |      | D | AM24474 01/12/15 PR |  |  |  |

Scale 3:10

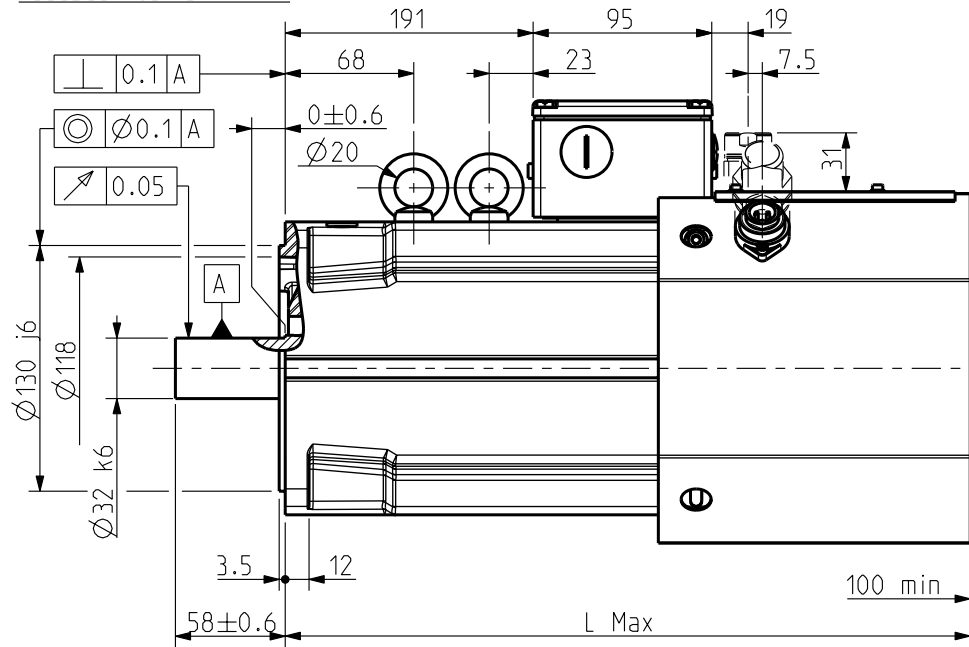
4 boulevard Eiffel - CS 40090  
21604 Longvic Cedex - France  
www.parker.com

NX800  
TERMINAL BOX VARIANT

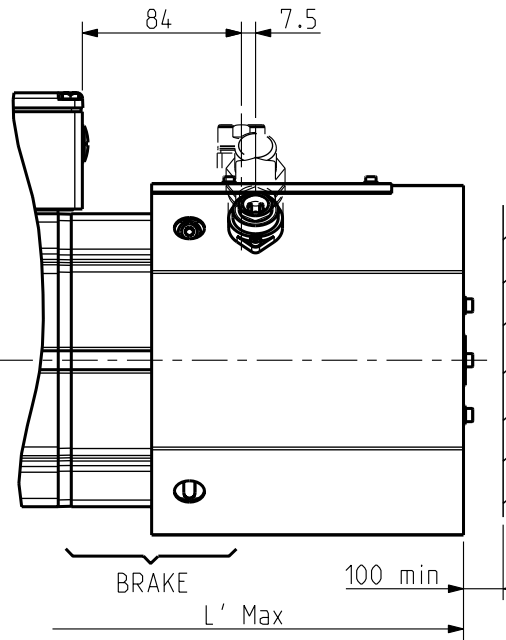
|        |   |   |   |   |   |
|--------|---|---|---|---|---|
| Format | F | E | S | G | I |
| A3     |   | x |   |   |   |
| 344469 |   |   |   |   |   |

THIS DOCUMENT CONTAINS INFORMATION THAT IS CONFIDENTIAL AND PROPRIETARY TO PARKER-HANNIFIN CORPORATION. THIS DOCUMENT IS FURNISHED ON THE UNDERSTANDING THAT THE DOCUMENT AND THE INFORMATION IT CONTAINS WILL NOT BE COPIED OR DISCLOSED TO OTHERS OR USED FOR ANY PURPOSE OTHER THAN CONDUCTING BUSINESS WITH PARKER-HANNIFIN CORPORATION, AND WILL BE RETURNED AND ALL FURTHER USE DISCONTINUED UPON REQUEST BY PARKER-HANNIFIN CORPORATION. THE RECIPIENT OF THIS DOCUMENT THROUGH ITS OWN ANALYSIS AND TESTING IS SOLELY RESPONSIBLE FOR MAKING THE FINAL SELECTION OF THE APPLICABLE SYSTEM AND COMPONENTS AND ASSURING THAT ALL PERFORMANCE, DURABILITY, MAINTENANCE, SAFETY AND WARNING REQUIREMENTS OF THE APPLICATION ARE MET. COPYRIGHT PARKER-HANNIFIN CORPORATION. YEAR OF COPYRIGHT IS FIRST YEAR INDICATED ON THIS DOCUMENT. ALL RIGHTS RESERVED.

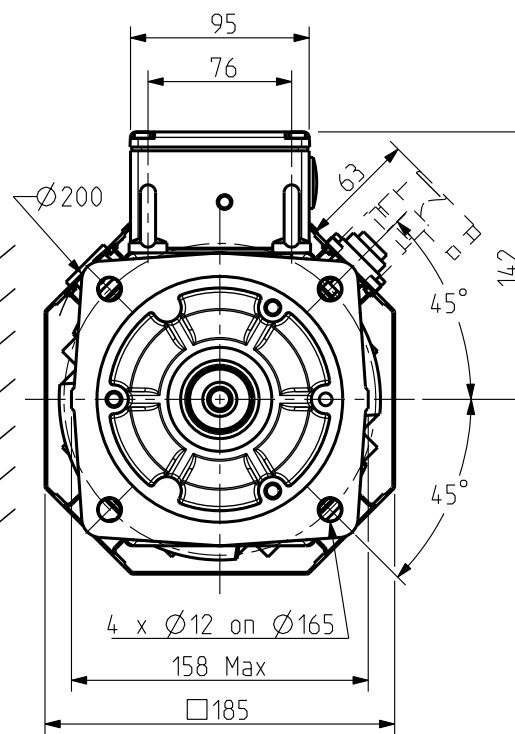
Feedback letter : A/X



Scale 1:4

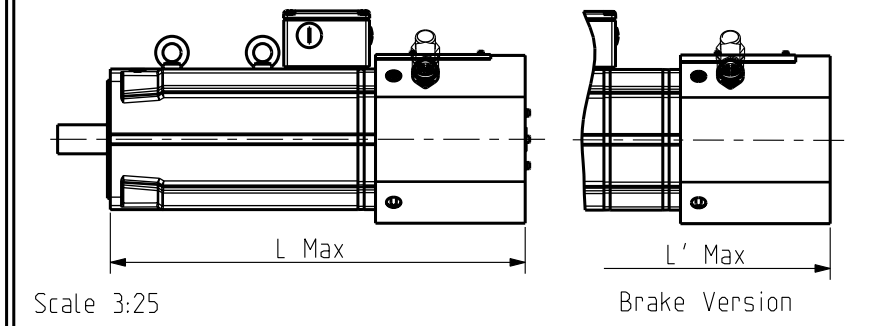


Scale 1:4  
Brake Version

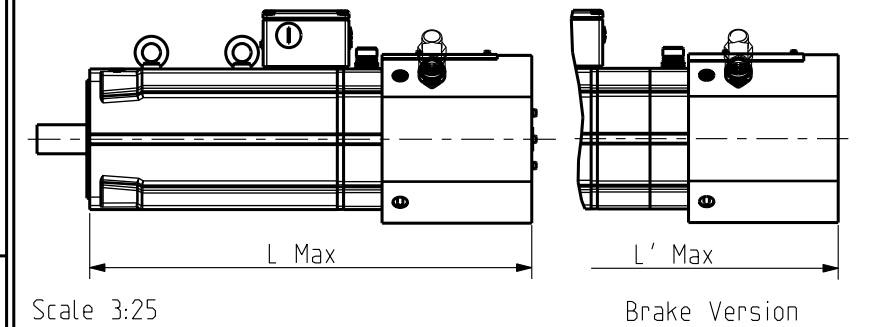


FEEDBACK OPTIONS

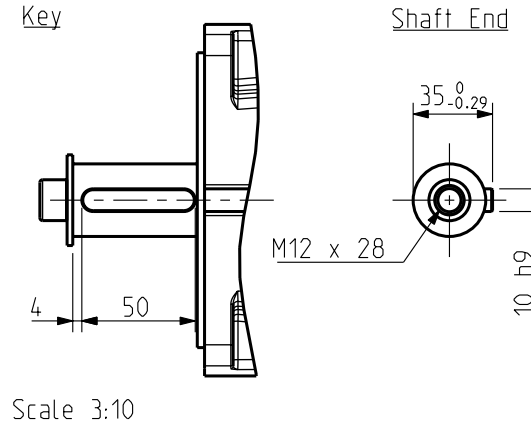
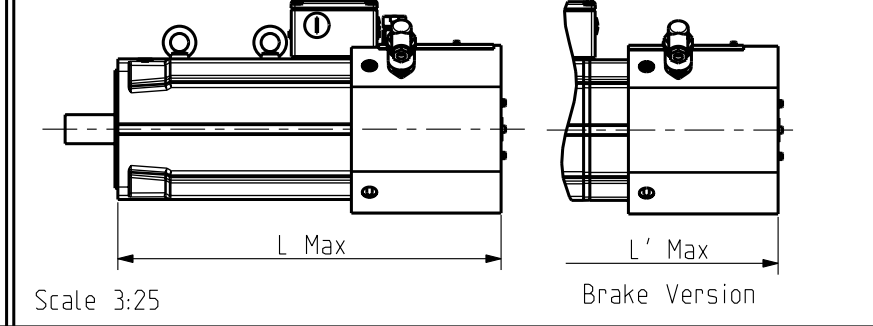
Feedback letter : R/S/V/W



Feedback letter : T/U



Feedback letter : Y

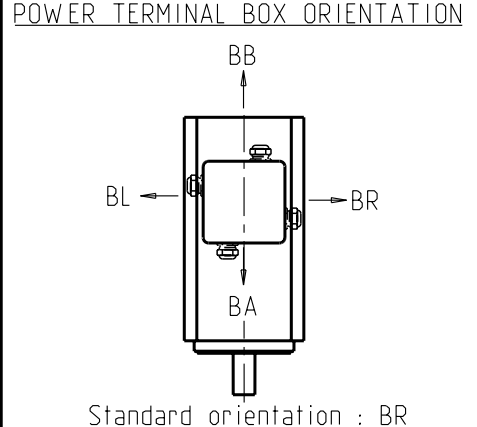
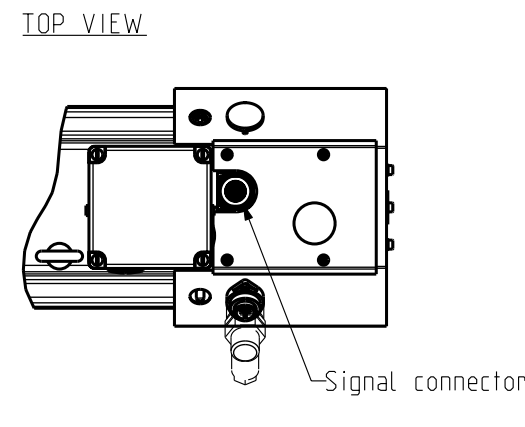


**BRAKE** Supply voltage : 24V ±10%  
Static torque

|        |       |
|--------|-------|
|        | NX860 |
| 20 °C  | 36 Nm |
| 100 °C | 32 Nm |

**Weight**

|            |         |
|------------|---------|
|            | NX860   |
| No Brake   | 30.5 Kg |
| With Brake | 34 Kg   |



|       | Feedback options (feedback letter) | Resolver (A) | Low cost encoder (X) | Hiperface SKS36 (R) | Hiperface SKM36 (S) | Endat ECN1113 (V) | Endat EQN1125 (W) | Hiperface SRS50 (T) | Hiperface SRM50 (U) | Sensorless (Y) |
|-------|------------------------------------|--------------|----------------------|---------------------|---------------------|-------------------|-------------------|---------------------|---------------------|----------------|
| NX860 | L (mm)                             | 424          |                      | 424                 |                     | 460               |                   | 490                 |                     | 424            |
|       | L' (mm)                            | 490          |                      | 490                 |                     | 525               |                   | 555                 |                     | 490            |

N X 8 \_ \_ V \_ \_ R 9 \_ \_ \_  
N X 8 \_ \_ V \_ \_ R 5 \*\* \_ \_ \_

Torque range (depends on length)      Winding (depends on speed)

0 : Plain Shaft  
1 : key  
0 : IP 64  
1 : IP 65

0 : Without Brake  
3 : Brake  
\* : Thermal protection options on drawing 344993

\*\* UL TERMINAL BOX AND VENTILATION

See connectors pin out and encoder settings on drawing 344993

General tolerances  
DIN ISO 2768 mK

|               |          |                     |      |   |                     |  |  |  |
|---------------|----------|---------------------|------|---|---------------------|--|--|--|
| Drawn         | 09/07/09 | YG                  | Visa |   |                     |  |  |  |
| Modifications | C        | AM24108 22/04/13 SD |      |   |                     |  |  |  |
|               | B        | AM24031 14/12/12 BB |      |   |                     |  |  |  |
|               | A        | AM23337 15/02/10 OD |      | D | AM24474 01/12/15 PR |  |  |  |

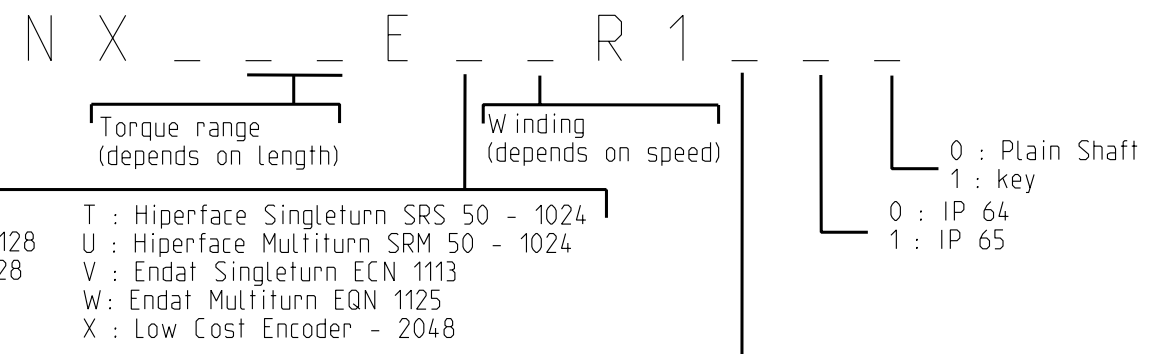
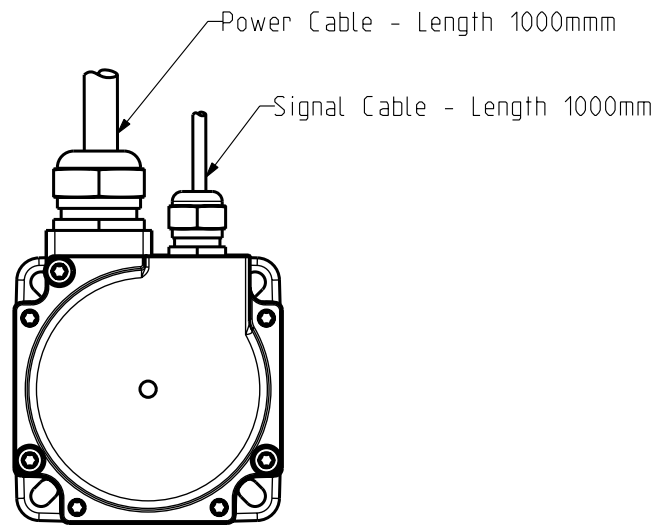
Scale 1:4

4 boulevard Eiffel - CS 40090  
21604 Longvic Cedex - France  
www.parker.com

NX800

TERMINAL BOX - VENTILATED

|        |   |   |   |   |   |
|--------|---|---|---|---|---|
| Format | F | E | S | G | I |
| A3     | x |   |   |   |   |
| 344469 |   |   |   |   |   |



A : Resolver  
R : Hiperface Singleturn SKS 36 - 128  
S : Hiperface Multiturn SKM 36 - 128

T : Hiperface Singleturn SRS 50 - 1024  
U : Hiperface Multiturn SRM 50 - 1024  
V : Endat Singleturn ECN 1113  
W : Endat Multiturn EQN 1125  
X : Low Cost Encoder - 2048

Temperature Sensor on Power Connector

0 : Base  
1 : PTC  
2 : Thermoswitch  
3 : Brake  
4 : Brake + PTC  
5 : Brake + Thermoswitch  
6 : KTY  
7 : Brake + KTY

Temperature Sensor on Signal Connector

A : PTC  
B : Thermoswitch  
C : KTY  
D : Brake + PTC  
E : Brake + Thermoswitch  
F : Brake + KTY

**POWER CABLE**

Motor Size : NX1/2  
Cable diameter :  $\varnothing 9.5$   
Shielded Pairs  
POWER : 4 x 0.5 mm<sup>2</sup>  
black : phase U  
white : phase V  
red : phase W  
yellow/green : ground

ACCESSORIES : 2 x ( 2 x 0.5 mm<sup>2</sup> )  
Yellow : No connection  
Orange : No connection  
Green Blue : Brake -  
Green Red : Brake +

} If the option is required

Motor Size : NX3/4/6  
Cable diameter :  $\varnothing 11.8$   
Twisted and shielded pairs + overall shield

POWER : 4 x 1.5 mm<sup>2</sup>  
black 1 : phase U  
black 2 : phase V  
black 3 : phase W  
yellow/green : ground

ACCESSORIES : 1 x ( 2 x 1 mm<sup>2</sup> )  
Black : Brake -  
White : Brake +

} If the option is required

**SIGNAL CABLE**

Motor Size : NX1/2  
Feedback Letter : A  
Cable diameter :  $\varnothing 7.1$   
Twisted and shielded pairs

SIGNAL CABLE : 6 x 0.24 mm<sup>2</sup>  
Red/white : R1  
Black/white : R2  
Red : S1

Yellow : S2  
Black : S3  
Blue : S4

Motor Size : NX3/4/6  
Feedback Letter : A  
Cable diameter :  $\varnothing 10$   
Twisted and shielded pairs + overall shield

SIGNAL CABLE : 4 x (2x 0.25 mm<sup>2</sup>)  
Pair 1 : (Red : R1 Black/Red : R2)  
Pair 2 : (White : S3 Black/White : S1)  
Pair 3 : (Blue : S4 Black/Blue : S2)

Motor Size : NX2/3/4/6  
Feedback Letter : R/S/T/U  
Cable diameter :  $\varnothing 10$   
Twisted and shielded pairs + overall shield

SIGNAL CABLE : 4 x (2x 0.25 mm<sup>2</sup>)  
Pair 1 : (Black : Gnd Red : Us)  
Pair 2 : (Black : Data- Green : Data+)  
Pair 3 : (Black : Ref Sin White : +Sin)  
Pair 4 : (Black : Ref Cos Blue : +Cos)

Motor Size : NX3/4/6  
Feedback Letter : V/W  
Cable diameter :  $\varnothing 10.8$   
Twisted and shielded pairs + overall shield

SIGNAL CABLE : 5 x (2x 0.25 mm<sup>2</sup>)  
Pair 1 : (Black : Data\ Red : Data)  
Pair 2 : (Black : A- Green : A+)  
Pair 3 : (Black : 0V White : Up 5V)  
Pair 4 : (Black : B- Blue : B+)  
Pair 5 : (Black : Clock\ Yellow : Clock)

Motor Size : NX2/3/4/6  
Feedback Letter : X  
Cable diameter :  $\varnothing 10.8$   
Twisted and shielded pairs + overall shield

SIGNAL CABLE : 5 x (2x 0.25 mm<sup>2</sup>)  
Pair 1 : (Black : GND Red : VCC)  
Pair 2 : (Black : A\ Green : A)  
Pair 3 : (Black : B\ Blue : B)  
Pair 4 : (Black : Z White : U)  
Pair 5 : (Black : V Yellow : W)

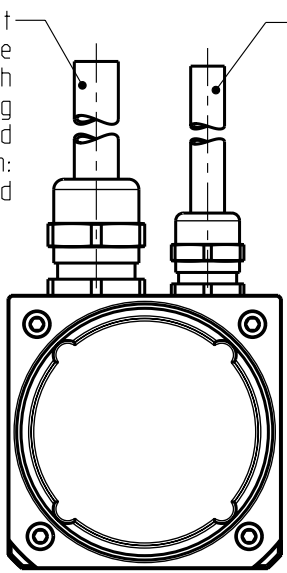
**ENCODER SETTINGS**

|  |   |  |   |   |
|--|---|--|---|---|
| Feedback Letter : A  | Feedback Letter : R/S   | Feedback Letter : T/U  | Feedback Letter : V/W   | Feedback Letter : X   |
| Motor powered by direct current at the current nominal value (W+ and V-), the shift is 90° electrical. | Motor powered by direct current at the current nominal value (W+ et V-), value in encoder memory is 205 | Motor powered by direct current at the current nominal value (W+ et V-), value in encoder memory is 1638 | Motor powered by direct current at the current nominal value (W+ et V-), value in encoder memory is 410 | Engine driven clockwise shaft end side. Switching signal V is in phase with FEM UV. |

|   |   |                     |          |                     |      |                     |   |                     |  |   |  |        |   |   |   |   |   |  |  |
|---|---|---------------------|----------|---------------------|------|---------------------|---|---------------------|--|---|--|--------|---|---|---|---|---|--|--|
| <small>THIS DOCUMENT CONTAINS INFORMATION THAT IS CONFIDENTIAL AND PROPRIETARY TO PARKER-HANNIFIN CORPORATION. THIS DOCUMENT IS FURNISHED ON THE UNDERSTANDING THAT THE DOCUMENT AND THE INFORMATION IT CONTAINS WILL NOT BE COPIED OR DISCLOSED TO OTHERS OR USED FOR ANY PURPOSE OTHER THAN CONDUCTING BUSINESS WITH PARKER-HANNIFIN CORPORATION, AND WILL BE RETURNED AND ALL FURTHER USE DISCONTINUED UPON REQUEST BY PARKER-HANNIFIN CORPORATION. THE RECIPIENT OF THIS DOCUMENT THROUGH ITS OWN ANALYSIS AND TESTING IS SOLELY RESPONSIBLE FOR MAKING THE FINAL SELECTION OF THE APPLICABLE SYSTEM AND COMPONENTS AND ASSURING THAT ALL PERFORMANCE, DURABILITY, MAINTENANCE, SAFETY AND WARNING REQUIREMENTS OF THE APPLICATION ARE MET. COPYRIGHT PARKER-HANNIFIN CORPORATION. YEAR OF COPYRIGHT IS FIRST YEAR INDICATED ON THIS DOCUMENT. ALL RIGHTS RESERVED.</small> | General tolerances<br><br>DIN ISO 2768 mk | Drawn               | 03/07/09 | YG                  | Visa |                     |   |                     |  | <br>4 boulevard Eiffel - CS 40090<br>21604 Longvic Cedex - France<br>www.parker.com | NX MOTORS CONNECTIONS<br><br>CABLE VARIANT | Format | F | E | S | G | I |  |  |
|   |   | Modifications       | I        | AM24474 01/12/15 PR |      |                     | F | AM23892 26/06/12 PR |  |   |  | A3     |   |   |   |   |   |  |  |
|   |   |                     | H        | AM24108 22/04/13 SD |      |                     | E | AM23624 26/05/11 YG |  |   |  |        |   |   |   |   |   |  |  |
|   | G   | AM23924 26/07/12 PR |          |                     | D    | AM23533 26/01/11 OD |   |                     |  |   |  |        |   |   |   |   |   |  |  |

344993

Power output  
Output wires inside  
Ø9 PVC sheath  
Overall shielding  
connected to ground  
Wire, shielding, sheath:  
Ends not stripped



Signal output \*\*  
Output wires inside  
Ø7 PVC sheath  
Overall shielding  
connected to ground  
Wire, shielding, sheath:  
Ends not stripped

NX1 and NX2 ONLY

N X - - E - - R 4

Torque range (depends on length)      Winding (depends on speed)

A : Resolver

R : Hiperface Singleturn SKS 36 - 128  
S : Hiperface Multiturn SKM 36 - 128  
X : Low Cost Encoder - 2048

0 : Plain Shaft  
1 : key  
0 : IP 64  
1 : IP 65

Temperature Sensor on Power Connector

0 : Base      3 : Brake  
1 : PTC      4 : Brake + PTC  
2 : Thermoswitch      5 : Brake + Thermoswitch  
6 : KTY      7 : Brake + KTY

Temperature Sensor on Signal Connector

A : PTC      D : Brake + PTC  
B : Thermoswitch      E : Brake + Thermoswitch  
C : KTY      F : Brake + KTY

\*\* Except for encoders Q/R/S : the output cable is the encoder's cable

**POWER CABLE**

Motor Size : NX1/2  
Length 1000 mm  
POWER : 4 x 0.5 mm<sup>2</sup>

black : phase U  
white : phase V  
red : phase W  
yellow/green : ground

BRAKE : 2 x 0.14 mm<sup>2</sup>  
green/red : +  
green/blue : - } If the option is required

Brake wires outside shielding

**SIGNAL CABLE**

Motor Size : NX1/2  
Feedback letter : A  
Length 1000 mm  
SIGNAL : 6 x 0.08 mm<sup>2</sup>, AWG28

red/white : R1      yellow : S2  
yellow/white : R2      red : S3  
black : S1      blue : S4

|            |            |                   |
|------------|------------|-------------------|
| S1 = Cos - | S2 = Sin - | R1 = excitation + |
| S3 = Cos + | S4 = Sin + | R2 = excitation - |

Rotor is rotating in clock wise viewed from shaft end view.

Motor Size : NX2  
Feedback Letter : X  
Encoder cable  
Length : 0.10m  
SIGNAL : 14 x AWG26

red : VCC      purple : Z  
black : GND      black/purple : Z\  
blue : A      brown : U  
black/blue : A\  
green : B      grey : V  
black/green : B\  
black/grey : V\  
white : W  
black/white : W\  
black/purple : Z\  
brown : U  
black/brown : U\  
grey : V  
black/grey : V\  
white : W  
black/white : W\  
black/purple : Z\  
brown : U  
black/brown : U\  
grey : V  
black/grey : V\  
white : W  
black/white : W\  
black/purple : Z  
brown : U  
black/brown : U  
grey : V  
black/grey : V  
white : W  
black/white : W

Motor Size : NX2  
Feedback Letter : R/S  
Encoder cable unshielded  
Length : 0.15m  
SIGNAL : 8 x 0.24mm<sup>2</sup>

red : Us      black : Ref Cos  
white : +Sin      blue : GND  
brown : RefSin      grey or yellow : Data+  
pink : +Cos      green or purple : Data-

**ENCODER SETTINGS**

Feedback Letter : A

Feedback Letter : R/S

Feedback Letter : X

Motor powered by direct current at the current nominal value (W+ and V-), the shift is 90° electrical.

Motor powered by direct current at the current nominal value (W+ et V-), value in encoder memory is 205

Engine driven clockwise shaft end side. Switching signal V is in phase with FEM UV.

General tolerances  
DIN ISO 2768 mK

|               |          |                     |      |                     |  |  |  |  |
|---------------|----------|---------------------|------|---------------------|--|--|--|--|
| Drawn         | 03/07/09 | YG                  | Visa |                     |  |  |  |  |
| Modifications | I        | AM24474 01/12/15 PR | F    | AM23892 26/06/12 PR |  |  |  |  |
|               | H        | AM24108 22/04/13 SD | E    | AM23624 26/05/11 YG |  |  |  |  |
|               | G        | AM23924 26/07/12 PR | D    | AM23533 26/01/11 OD |  |  |  |  |

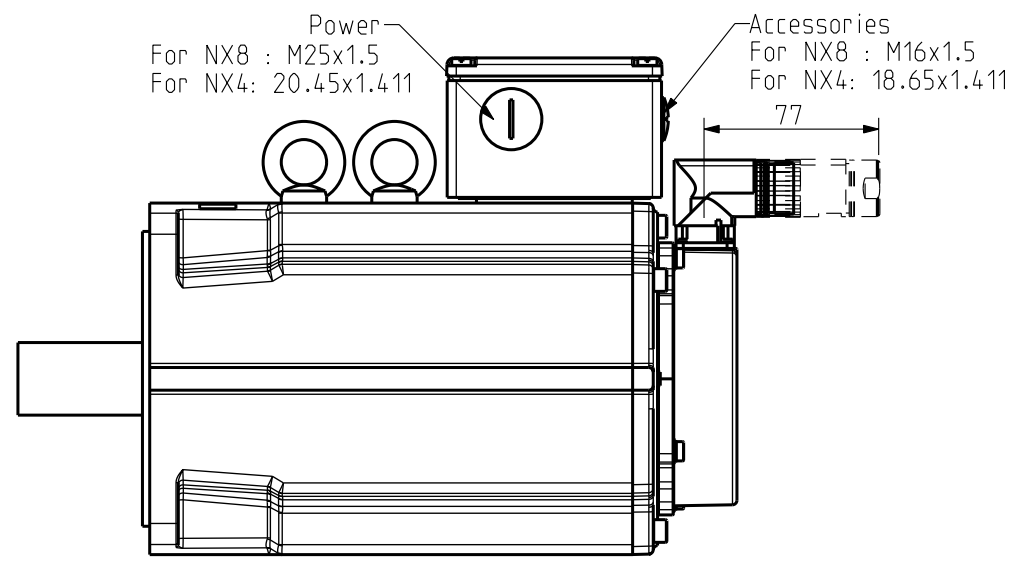
Scale /

4 boulevard Eiffel - CS 40090  
21604 Longvic Cedex - France  
www.parker.com

NX MOTORS CONNECTIONS  
FLYING WIRES VARIANT

|        |   |   |   |   |   |
|--------|---|---|---|---|---|
| Format | F | E | S | G | I |
| A3     | x |   |   |   |   |
| 344993 |   |   |   |   |   |

THIS DOCUMENT CONTAINS INFORMATION THAT IS CONFIDENTIAL AND PROPRIETARY TO PARKER-HANNIFIN CORPORATION. THIS DOCUMENT IS FURNISHED ON THE UNDERSTANDING THAT THE DOCUMENT AND THE INFORMATION IT CONTAINS WILL NOT BE COPIED OR DISCLOSED TO OTHERS OR USED FOR ANY PURPOSE OTHER THAN CONDUCTING BUSINESS WITH PARKER-HANNIFIN CORPORATION, AND WILL BE RETURNED AND ALL FURTHER USE DISCONTINUED UPON REQUEST BY PARKER-HANNIFIN CORPORATION. THE RECIPIENT OF THIS DOCUMENT THROUGH ITS OWN ANALYSIS AND TESTING IS SOLELY RESPONSIBLE FOR MAKING THE FINAL SELECTION OF THE APPLICABLE SYSTEM AND COMPONENTS AND ASSURING THAT ALL PERFORMANCE, DURABILITY, MAINTENANCE, SAFETY AND WARNING REQUIREMENTS OF THE APPLICATION ARE MET. COPYRIGHT PARKER-HANNIFIN CORPORATION. YEAR OF COPYRIGHT IS FIRST YEAR INDICATED ON THIS DOCUMENT. ALL RIGHTS RESERVED.



N X - - E - - R 6

Torque range  
(depends on length)

Winding  
(depends on speed)

A : Resolver  
 R : Hiperface Singleturn SKS 36 - 128  
 S : Hiperface Multiturn SKM 36 - 128  
 T : Hiperface Singleturn SRS 50 - 1024  
 U : Hiperface Multiturn SRM 50 - 1024  
 V : Endat Singleturn ECN 1113  
 W : Endat Multiturn EQN 1125  
 X : Low Cost Encoder - 2048

0 : Plain Shaft  
 1 : key  
 0 : IP 64  
 1 : IP 65

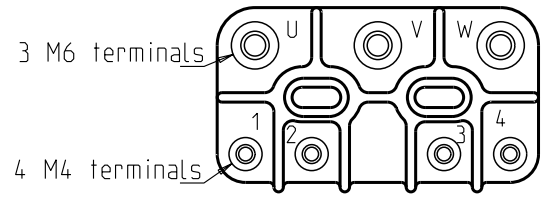
Temperature Sensor on Power Connector

|                  |                          |
|------------------|--------------------------|
| 0 : Base         | 3 : Brake                |
| 1 : PTC          | 4 : Brake + PTC          |
| 2 : Thermoswitch | 5 : Brake + Thermoswitch |
| 6 : KTY          | 7 : Brake + KTY          |

Temperature Sensor on Signal Connector

|                  |                          |
|------------------|--------------------------|
| A : PTC          | D : Brake + PTC          |
| B : Thermoswitch | E : Brake + Thermoswitch |
| C : KTY          | F : Brake + KTY          |

**TERMINAL BOX**



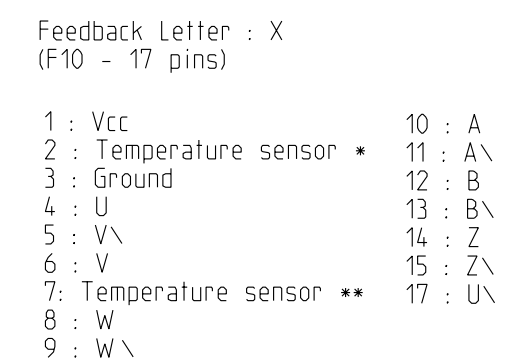
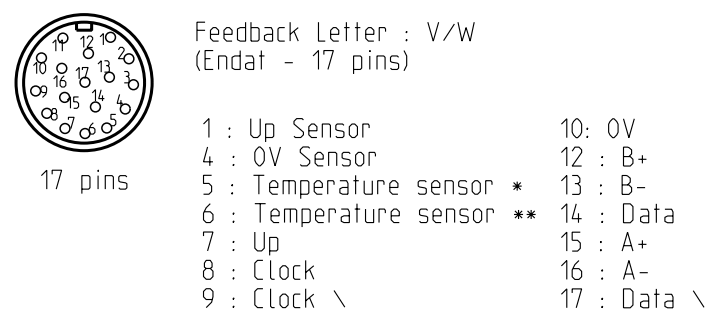
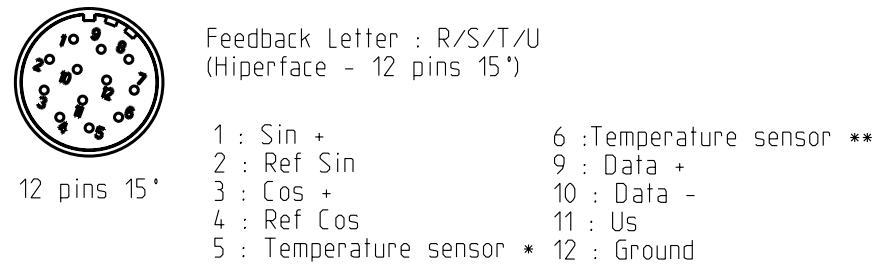
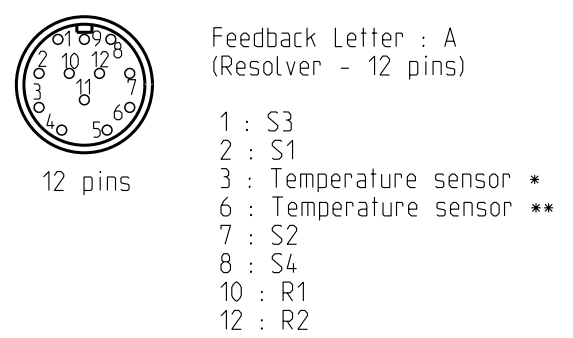
Ground in the terminal box (M6)

U : Phase U  
 V : Phase V  
 W : Phase W  
 1 : Brake +  
 2 : Brake -  
 3 : Temperature sensor\*  
 4 : Temperature sensor\*\*

} If the option is required

\* PTC or Thermoswitch or KTY Anode  
 \*\* PTC or Thermoswitch or KTY Cathode

**SIGNAL CONNECTOR**



|            |            |                   |
|------------|------------|-------------------|
| S1 = Cos - | S2 = Sin - | R1 = excitation + |
| S3 = Cos + | S4 = Sin + | R2 = excitation - |

Rotor is rotating in clock wise viewed from shaft end view.

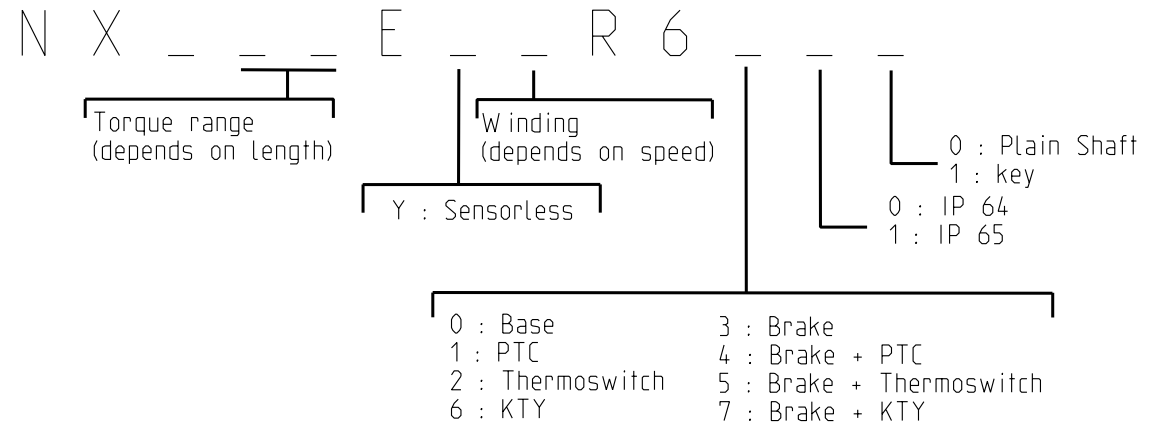
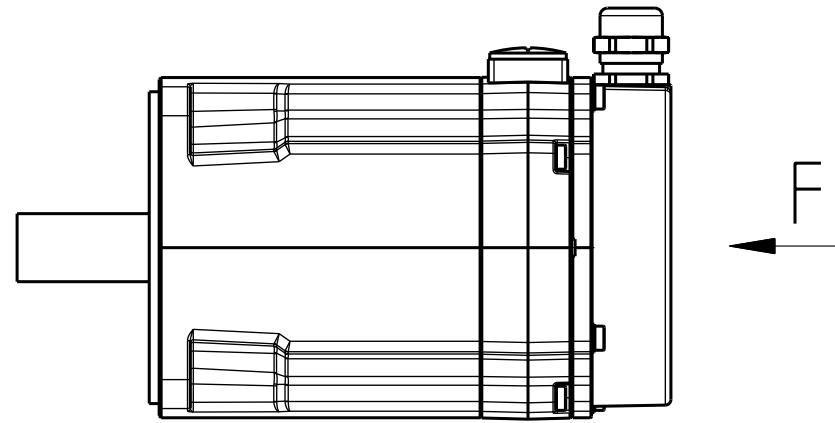
\* PTC or Thermoswitch or KTY Anode  
 \*\* PTC or Thermoswitch or KTY Cathode

} If the option is required

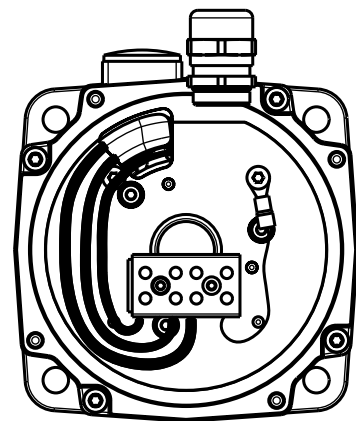
**ENCODER SETTINGS**

|   |  |   |  |  |
|---|--|---|--|--|
| Feedback Letter : A<br>Motor powered by direct current at the current nominal value (W+ and V-), the shift is 90° electrical. | Feedback Letter : R/S<br>Motor powered by direct current at the current nominal value (W+ et V-), value in encoder memory is 205 | Feedback Letter : T/U<br>Motor powered by direct current at the current nominal value (W+ et V-), value in encoder memory is 1638 | Feedback Letter : V/W<br>Motor powered by direct current at the current nominal value (W+ et V-), value in encoder memory is 410 | Feedback Letter : X<br>Engine driven clockwise shaft end side. Switching signal V is in phase with FEM UV. |
|---|--|---|--|--|

|   |   |                        |   |   |  |   |                         |                |   |
|---|---|------------------------|---|---|--|---|-------------------------|----------------|---|
| <small>THIS DOCUMENT CONTAINS INFORMATION THAT IS CONFIDENTIAL AND PROPRIETARY TO PARKER-HANNIFIN CORPORATION. THIS DOCUMENT IS FURNISHED ON THE UNDERSTANDING THAT THE DOCUMENT AND THE INFORMATION IT CONTAINS WILL NOT BE COPIED OR DISCLOSED TO OTHERS OR USED FOR ANY PURPOSE OTHER THAN CONDUCTING BUSINESS WITH PARKER-HANNIFIN CORPORATION, AND WILL BE RETURNED AND ALL FURTHER USE DISCONTINUED UPON REQUEST BY PARKER-HANNIFIN CORPORATION. THE RECIPIENT OF THIS DOCUMENT THROUGH ITS OWN ANALYSIS AND TESTING IS SOLELY RESPONSIBLE FOR MAKING THE FINAL SELECTION OF THE APPLICABLE SYSTEM AND COMPONENTS AND ASSURING THAT ALL PERFORMANCE, DURABILITY, MAINTENANCE, SAFETY AND WARNING REQUIREMENTS OF THE APPLICATION ARE MET. COPYRIGHT PARKER-HANNIFIN CORPORATION. YEAR OF COPYRIGHT IS FIRST YEAR INDICATED ON THIS DOCUMENT. ALL RIGHTS RESERVED.</small> | General tolerances<br><br>DIN ISO 2768 mK | Drawn 03/07/09 YG Visa | I AM24474 01/12/15 PR<br>H AM24108 22/04/13 SD<br>G AM23924 26/07/12 PR         | F AM23892 26/06/12 PR<br>E AM23624 26/05/11 YG<br>D AM23533 26/01/11 OD |  | NX MOTORS CONNECTIONS<br><br>TERMINAL BOX VARIANT | Format A3<br><br>344993 | F E S G I<br>x | 1 |
|   |   | Scale /                | 4 boulevard Eiffel - CS 40090<br>21604 Longvic Cedex - France<br>www.parker.com | 1   |  |   |                         |                |   |
|   |   | 1                      |   |   |  |   |                         |                |   |



POWER TERMINAL BLOCK



WITHOUT BRAKE

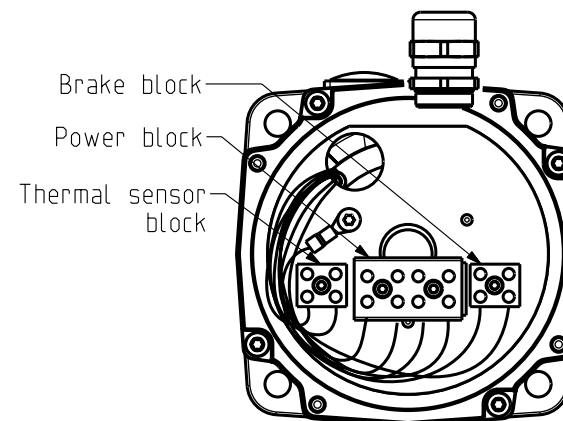
CONNECT SHIELDING TO GROUND WIRE

POWER

- Black : phase U
- White : phase V
- Red : phase W
- Yellow/Green : ground wire

VIEW F WITHOUT COVER

POWER & ACCESSORIES TERMINAL BLOCKS (FOR NX6 & NX8)



WITH BRAKE

POWER BLOCK

- Black : phase U
- White : phase V
- Red : phase W
- Yellow/Green : ground

CONNECT SHIELDING TO GROUND WIRE

VIEW F WITHOUT COVER

THERMAL SENSOR BLOCK



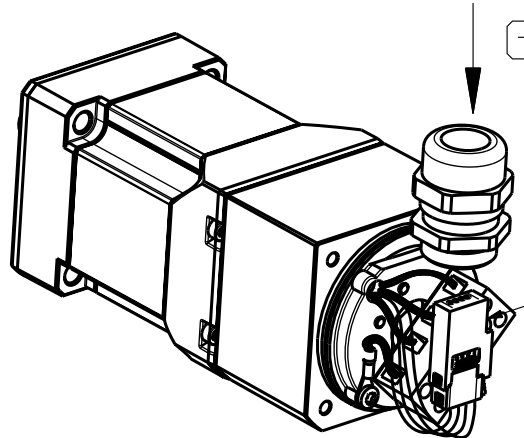
- Thermal sensor cathode\*\*
- Thermal sensor anode\*

BRAKE BLOCK



- Red : Brake +
- Black : Brake -

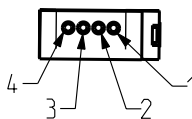
ACCESSORIES CONNECTOR (NX2 ONLY)



Power block

- Black : phase U
- White : phase V
- Red : phase W
- Yellow/Green : ground wire

Accessories connector



G VIEW

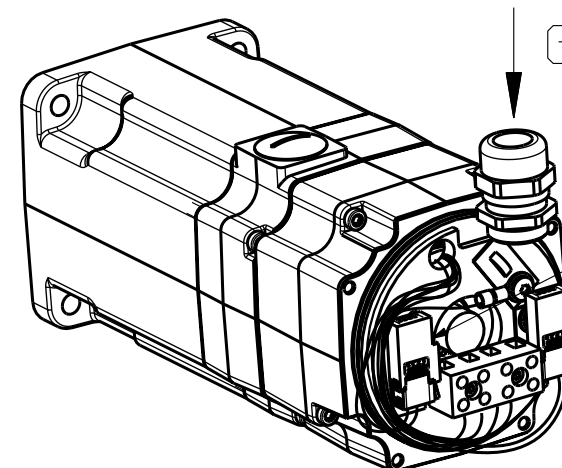
- 1 : Thermal Sensor \*
- 2 : Thermal Sensor \*\*
- 3 : Red : Brake +
- 4 : Black : Brake -

ACCESSORIES CABLES :  
Section AWG20 or 0.5 mm<sup>2</sup>

3D VIEW WITHOUT COVER

\* PTC or Thermoswitch or KTY Anode  
\*\* PTC or Thermoswitch or KTY Cathode } If the option is required

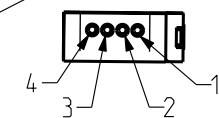
ACCESSORIES CONNECTORS (FOR NX3 & NX4)



Power block

- Black : phase U
- White : phase V
- Red : phase W
- Yellow/Green : ground wire

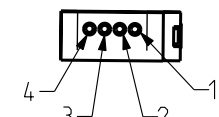
Thermal sensor connector (option)



G VIEW

- Cables AWG20 or 0.5 mm<sup>2</sup>
- 1 : Thermal Sensor \*
- 2 : Thermal Sensor \*\*
- 3 : Not connected
- 4 : Not connected

Brake connector (option)



G VIEW

- Cables AWG20 or 0.5 mm<sup>2</sup>
- 1 : Not connected
- 2 : Not connected
- 3 : Red : Brake +
- 4 : Black : Brake -

3D VIEW WITHOUT COVER

General tolerances  
DIN ISO 2768 mK

|               |          |         |          |    |   |         |          |    |
|---------------|----------|---------|----------|----|---|---------|----------|----|
| Drawn         | 03/07/09 | YG      | Visa     |    |   |         |          |    |
| Modifications | I        | AM24474 | 01/12/15 | PR | F | AM23892 | 26/06/12 | PR |
|               | H        | AM24108 | 22/04/13 | SD | E | AM23624 | 26/05/11 | YG |
|               | G        | AM23924 | 26/07/12 | PR | D | AM23533 | 26/01/11 | OD |

Scale

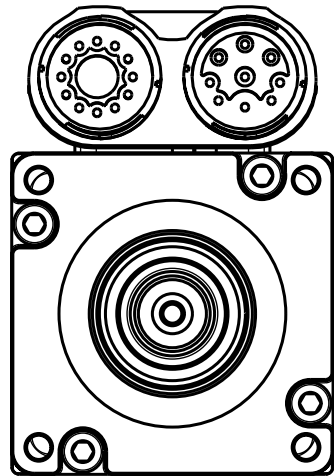
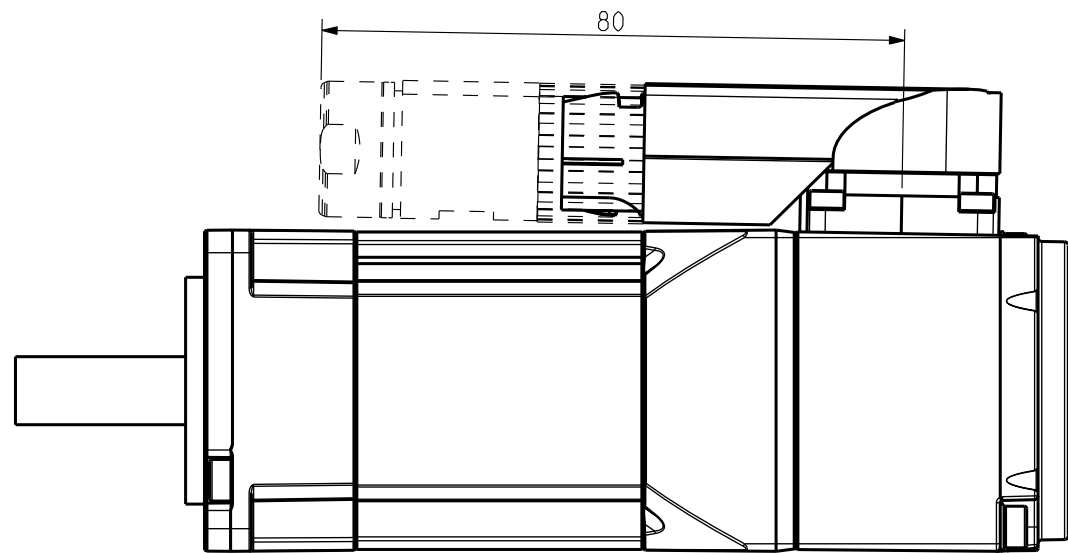
4 boulevard Eiffel - CS 40090  
21604 Longvic Cedex - France  
www.parker.com

NX MOTORS CONNECTIONS  
TERMINAL BLOCK VARIANT

|        |   |   |   |   |   |
|--------|---|---|---|---|---|
| Format | F | E | S | G | I |
| A3     | x |   |   |   |   |
| 344993 |   |   |   |   |   |

THIS DOCUMENT CONTAINS INFORMATION THAT IS CONFIDENTIAL AND PROPRIETARY TO PARKER-HANNIFIN CORPORATION. THIS DOCUMENT IS FURNISHED ON THE UNDERSTANDING THAT THE DOCUMENT AND THE INFORMATION IT CONTAINS WILL NOT BE COPIED OR DISCLOSED TO OTHERS OR USED FOR ANY PURPOSE OTHER THAN CONDUCTING BUSINESS WITH PARKER-HANNIFIN CORPORATION, AND WILL BE RETURNED AND ALL FURTHER USE DISCONTINUED UPON REQUEST BY PARKER-HANNIFIN CORPORATION. THE RECIPIENT OF THIS DOCUMENT THROUGH ITS OWN ANALYSIS AND TESTING IS SOLELY RESPONSIBLE FOR MAKING THE FINAL SELECTION OF THE APPLICABLE SYSTEM AND COMPONENTS AND ASSURING THAT ALL PERFORMANCE, DURABILITY, MAINTENANCE, SAFETY AND WARNING REQUIREMENTS OF THE APPLICATION ARE MET. COPYRIGHT PARKER-HANNIFIN CORPORATION. YEAR OF COPYRIGHT IS FIRST YEAR INDICATED ON THIS DOCUMENT. ALL RIGHTS RESERVED.





N X 1 - E - R 7

Torque range  
(depends on length)

Winding  
(depends on speed)

A : Resolver

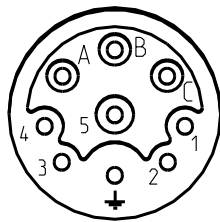
0 : Plain Shaft  
1 : key  
0 : IP 64  
1 : IP 65

Temperature Sensor on Power Connector

0 : Base      3 : Brake

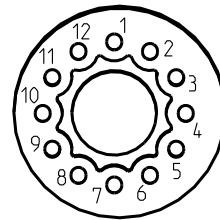
NX1 ONLY

POWER CONNECTOR



A : Phase U  
B : Phase V  
C : Phase W  
Ground  
1 : Brake +  
2 : Brake - } If the option is required

SIGNAL CONNECTOR



Feedback Letter : A  
(Resolver - 12 pins)

1 : S3  
2 : S1  
7 : S2  
8 : S4  
10 : R1  
12 : R2

|            |            |                   |
|------------|------------|-------------------|
| S1 = Cos - | S2 = Sin - | R1 = excitation + |
| S3 = Cos + | S4 = Sin + | R2 = excitation - |

Rotor is rotating in clock wise viewed from shaft end view.

ENCODER SETTINGS

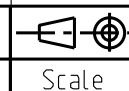
Feedback Letter : A

Motor powered by direct current at the current nominal value (W+ and V-), the shift is 90° electrical.

Sheet : 6/7

General tolerances  
DIN ISO 2768 mk

|               |          |         |          |    |   |         |          |    |
|---------------|----------|---------|----------|----|---|---------|----------|----|
| Drawn         | 03/07/09 | YG      | Visa     |    |   |         |          |    |
| Modifications | I        | AM24474 | 01/12/15 | PR | F | AM23892 | 26/06/12 | PR |
|               | H        | AM24108 | 22/04/13 | SD | E | AM23624 | 26/05/11 | YG |
|               | G        | AM23924 | 26/07/12 | PR | D | AM23533 | 26/01/11 | OD |



Scale



NX MOTORS CONNECTIONS  
CONNECTOR VARIANT

|        |   |   |   |   |   |   |
|--------|---|---|---|---|---|---|
| Format | F | E | S | G | I |   |
| A3     |   | x |   |   |   |   |
| 344993 |   |   |   |   |   | 1 |

THIS DOCUMENT CONTAINS INFORMATION THAT IS CONFIDENTIAL AND PROPRIETARY TO PARKER-HANNIFIN CORPORATION. THIS DOCUMENT IS FURNISHED ON THE UNDERSTANDING THAT THE DOCUMENT AND THE INFORMATION IT CONTAINS WILL NOT BE COPIED OR DISCLOSED TO OTHERS OR USED FOR ANY PURPOSE OTHER THAN CONDUCTING BUSINESS WITH PARKER-HANNIFIN CORPORATION, AND WILL BE RETURNED AND ALL FURTHER USE DISCONTINUED UPON REQUEST BY PARKER-HANNIFIN CORPORATION. THE RECIPIENT OF THIS DOCUMENT THROUGH ITS OWN ANALYSIS AND TESTING IS SOLELY RESPONSIBLE FOR MAKING THE FINAL SELECTION OF THE APPLICABLE SYSTEM AND COMPONENTS AND ASSURING THAT ALL PERFORMANCE, DURABILITY, MAINTENANCE, SAFETY AND WARNING REQUIREMENTS OF THE APPLICATION ARE MET. COPYRIGHT PARKER-HANNIFIN CORPORATION. YEAR OF COPYRIGHT IS FIRST YEAR INDICATED ON THIS DOCUMENT. ALL RIGHTS RESERVED.

