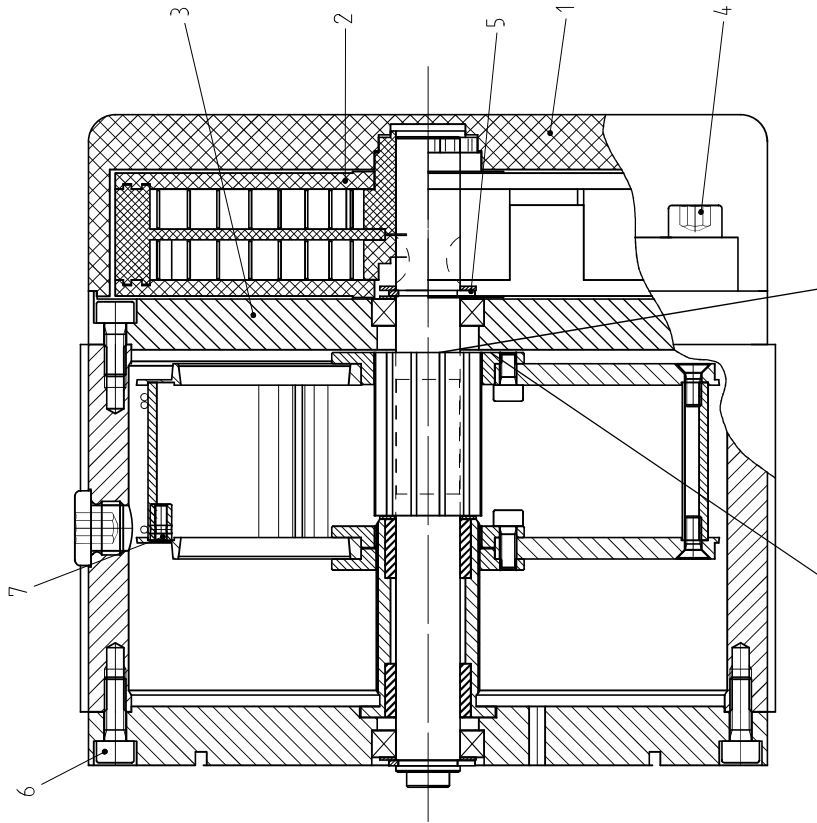


Repair Manual for Change of Measuring Wire at Rope Length Transmitter SL30.../GS130

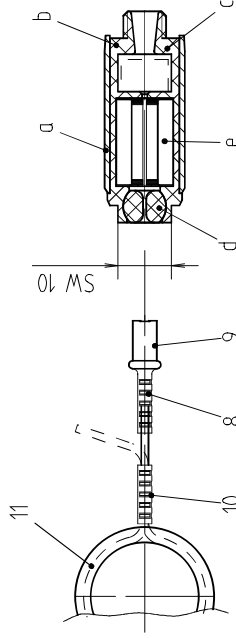


FERNSTEUERGERÄTE
Meß- und Regeltechnik GmbH
Mühlenweg 2-3 15758 Kablov



A: Disassembling of Rope Length Transmitter

1. Unscrew screws M6 (item 4) and remove the tension of spring cartridge by using slight pressure of spring case (1) against the flange (3)
2. Push spring case and spring cartridge from shaft away
3. Unlock locking ring and remove adjusting washers
4. Unscrew wire inlet by using a key (10 mm).
Remove tube (a) and pull halves (b + c) carefully apart
complete wire drum from casing
5. Unscrew screws M4 (item 6) and remove flange together with complete wire drum from casing
6. Unhinge wire hinge (7), remove headless screw and pull wire end out



B: Assembling of Rope Length Transmitter

1. Move tubular rivet (8) and rubber bush (9) at measuring wire
2. Thread the measuring wire through the ball (d) and lay it along the brush attachment (b) between the brushes (e)
3. Put brush attachment on and press it, move tube (a) on it
4. Thread wire through the casing, screw wire guidance in and fasten wire hinge (7) while rotating wire drum (see illustration).
5. Insert wire hinge (7) in drum and put flange (3) carefully into casing again
6. Apply adjusting washers again and launch locking ring
7. Fasten screws (6) again, push spring cartridge at shaft
8. Lock firmly measuring wire in order to avoid retraction when tensioning spring afterwards
9. Set spring case at spring cartridge and tense there after the spring to the maximum by turning carefully the spring case in clockwise direction (for units with wire outlet on right side)
10. For a longer lifetime tens any turns back (2 turns pro 10m measure length)
11. Fit screws (4) and tighten them
12. Redetermine prescribed measuring length (see type label at SL),
e. g. max. wire pull-off: 5200 mm
13. Unfix measuring wire. Wire entrance according to the max. wire pull-off length
14. Re-fix measuring wire when this position is achieved
15. Move rubber bush and tubular rivet to wire inlet and squeeze tubular rivet.
16. Cut measuring wire according to required forward length plus 200 mm
17. Push wire in tube (10), insert ring eyelet (1) and re-thread it through the tube and squeeze it afterwards. Finally cut overlaying wire end.