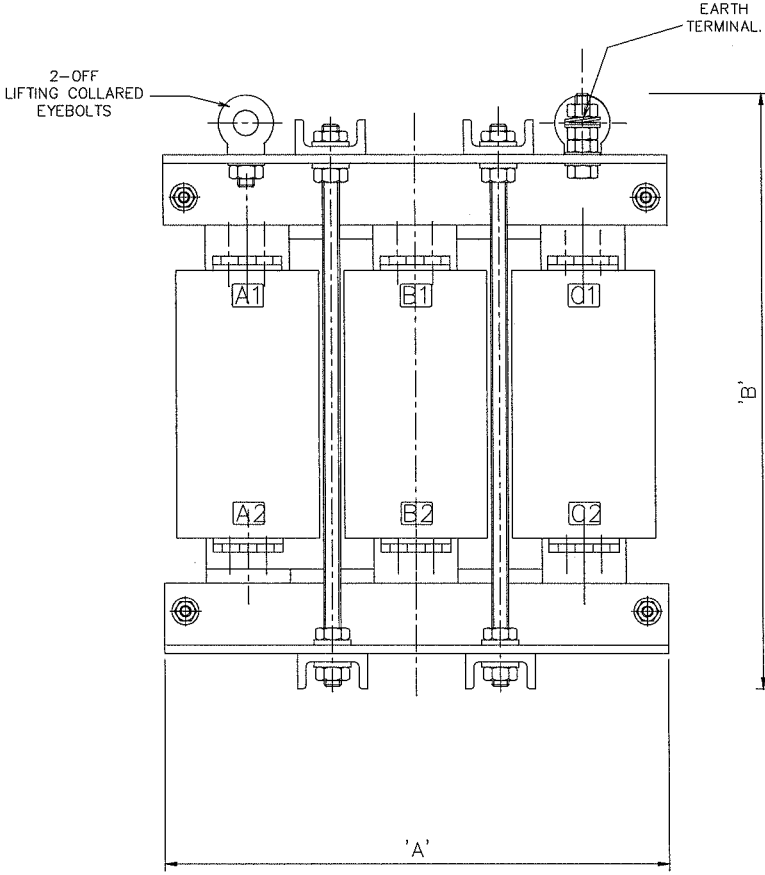
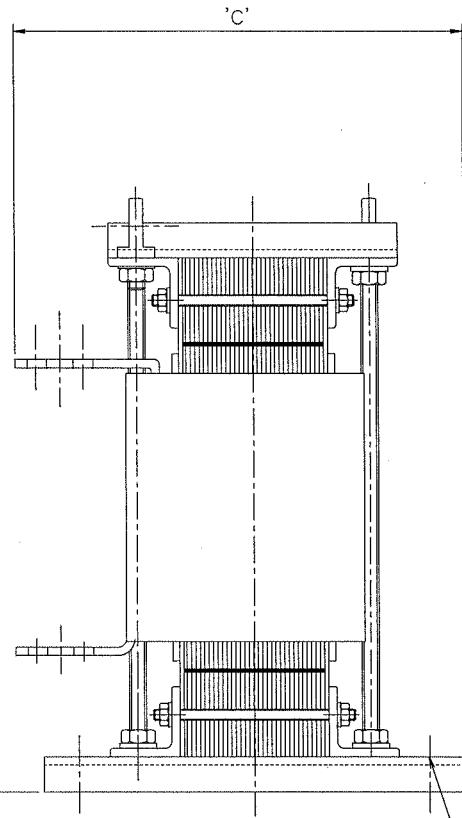


LR950 / LR1050 / LR1250  
 LR1450 / LR1650 / LR1850  
 LR2050 / LR2250

PROJECTION

SKOT TRANSFORMER LTD.  
 COPYRIGHT  
 ©

UNCONTROLLED COPY  
 USE ONLY FOR ORDER No.  
*Information Only*



Input Line Reactor Range 415V L-L System Voltage / 2% Reactance

	Reactor Rating	'A'	'B'	'C'	Weight	Heat Loss
LR950	827A Nom 18.5uH	360	450	360	80kg	390W
LR1050	914A Nom 16.7uH	360	450	360	90kg	420W
LR1250	1088A Nom 14uH	400	460	360	95kg	530W
LR1450	1262A Nom 12.1uH	450	460	360	105kg	630W
LR1650	1436A Nom 10.6uH	450	480	410	120kg	660W
LR1850	1610A Nom 9.5uH	450	480	420	140kg	680W
LR2050	1784A Nom 8.6uH	450	500	420	155kg	700W
LR2250	1958A Nom 7.8uH	450	500	420	165kg	800W

Above dimensions are approximate

4-OFF ø13.0mm  
 FIXING HOLES.

ISSUE	DESCRIPTION	APPROVED	DATE	TITLE	DRAWN	CHECKED	APPROVED	DATE
				GERNERAL ARRANGEMENT OF (3-PH INPUT LINE REACTOR ) 415V SYSTEM VOLTAGE - 2% REACTANCE CUT CORE	S.D.	<i>DL</i>	<i>DL</i>	08/6/09
					DRAWING No. <b>SD20285</b>			
					SKOT TRANSFORMERS LTD.			

MANUFACTURING TOLERANCES:  
 NO DECIMAL PLACE (Ø) ±1  
 ONE DECIMAL PLACE (Ø) ±0.5  
 UNLESS OTHERWISE STATED.  
 ALL DIMENSIONS IN mm.



TEL 01684 569104  
 FAX 01684 565766  
 UPPER COLWALL  
 MALVERN, WORCS  
 WR13 6PL