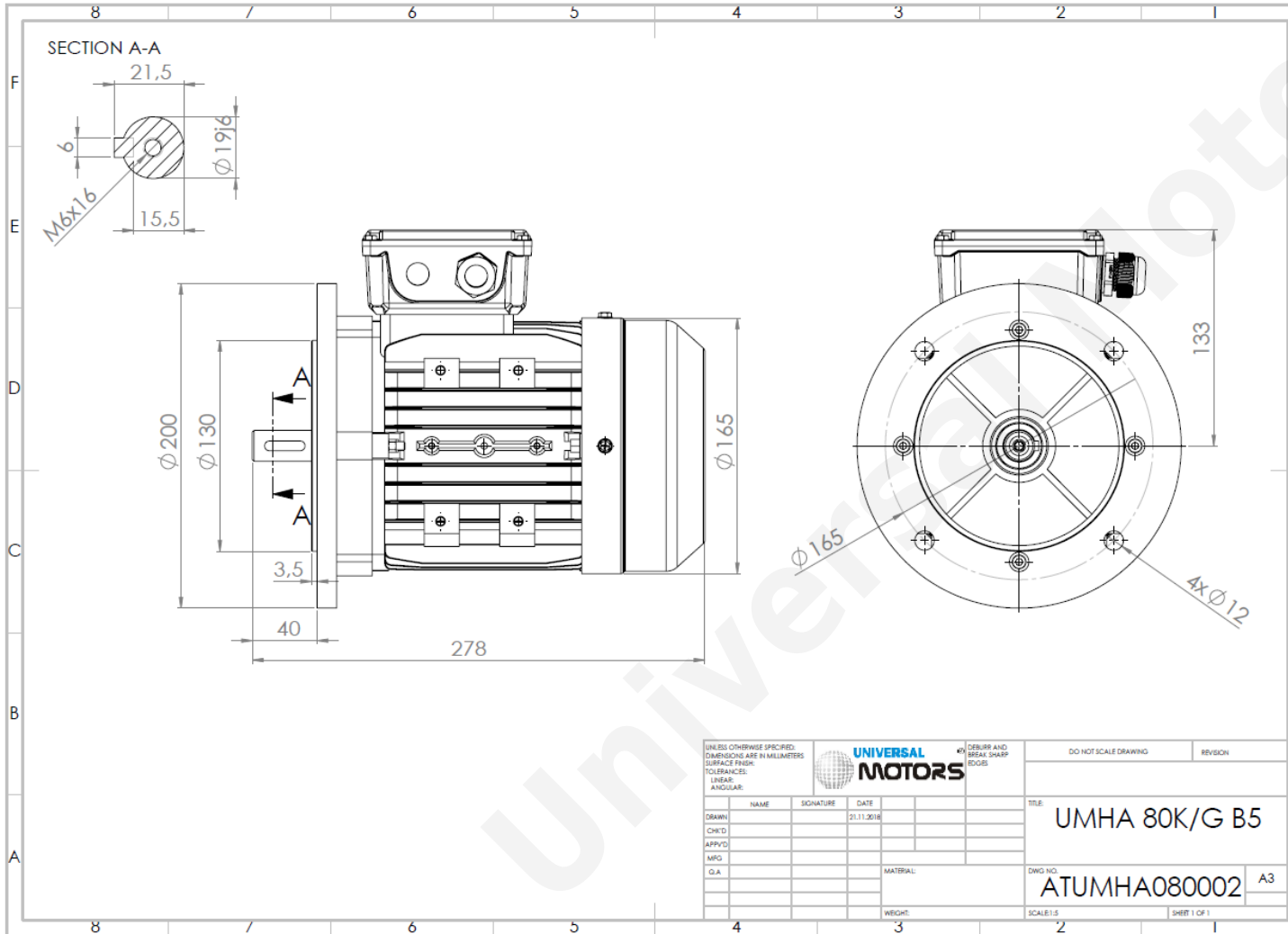


TECHNICAL DATA

Three Phase Electric Motors - Aluminum Frame
UMHA 80K-6
0.37 kW / 0.50 Cv
890 RPM



Motor type:	UMHA 80K-6
Output:	0.37 kW / 0.50 Cv
Speed (min ⁻¹):	890 RPM
Voltage:	400 V
Frequency:	50 Hz
Current:	1.2 A
Power factor (Cos Ø):	0.65
Poles:	6
Insulation class:	F
Temperature rise Class:	B
Efficiency 50%:	63.2 %
Efficiency 75%:	67.6 %
Efficiency 100%:	67.6 %
Torque:	3.97 N.m
Tstarting/Tnominal:	2.0
Istarting/Inominal:	5.5
Tmaximum/Tnominal:	2.1
Noise:	63 Db(A)
Weight:	8.4 Kg
Bearing DE:	6204 2Z C3
Bearing NDE:	6204 2Z C3

Regime - S1

Altitude - 1000m

Environment Temperature - 40°C

CONTACTS:

Universal Motors UK, Ltd
Unit E2, Meltham Mills Industrial Estate, Meltham Mills Road, Meltham, Holmfirth
West Yorkshire HD9 4AR, U.K

Tel: +44(0) 1484 660 222

Fax: +44(0) 1484 660 333

Mail: enquiries@universalmotors-group.co.uk

* References applied only in the UK