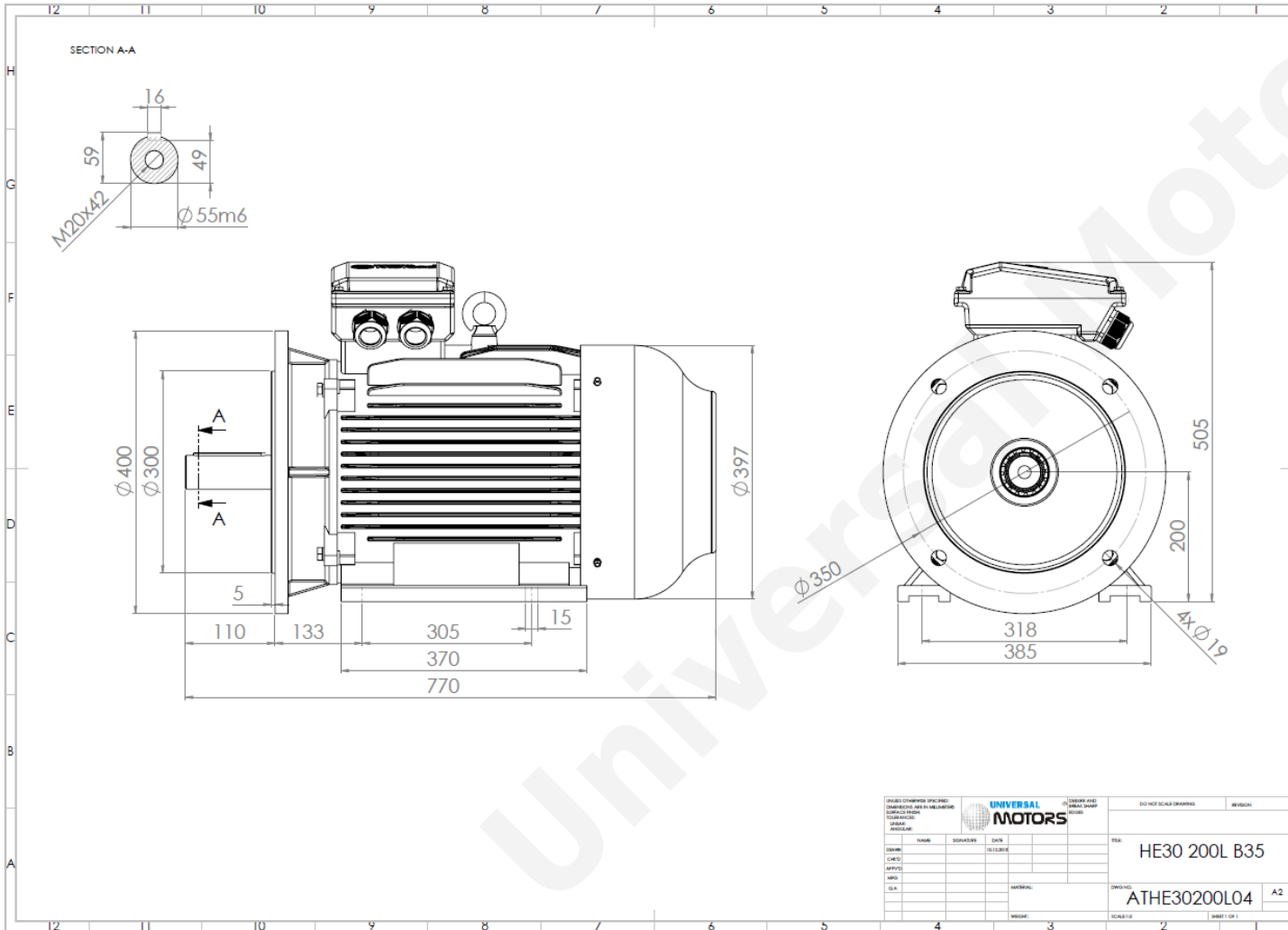


TECHNICAL DATA

Three Phase Electric Motors - Cast Iron Frame
UMHCO 200LX-2 IE2
37 kW / 50 Cv
2960 RPM



| | |
|---|--------------------------|
| Motor type: | UMHCO 200LX-2 IE2 |
| Output: | 37 kW / 50 Cv |
| Speed (min ⁻¹): | 2960 RPM |
| Voltage: | 400 V |
| Frequency: | 50 Hz |
| Current: | 64.9 A |
| Power factor (Cos ϕ): | 0.89 |
| Poles: | 2 |
| Insulation class: | F |
| Temperature rise Class: | B |
| Efficiency 50%: | 91.5 % |
| Efficiency 75%: | 92.9 % |
| Efficiency 100%: | 92.5 % |
| Torque: | 119 N.m |
| T _{starting} /T _{nominal} : | 2.2 |
| I _{starting} /I _{nominal} : | 7.5 |
| T _{maximum} /T _{nominal} : | 2.3 |
| Noise: | 84 Db(A) |
| Weight: | 263 Kg |
| Bearing DE: | 6312 C3 |
| Bearing NDE: | 6312 C3 |

Regime - S1

Altitude - 1000m

Environment Temperature - 40°C

CONTACTS:

Universal Motors UK, Ltd
Unit E2, Meltham Mills Industrial Estate, Meltham Mills Road, Meltham, Holmfirth
West Yorkshire HD9 4AR, U.K

Tel: +44(0) 1484 660 222

Fax: +44(0) 1484 660 333

Mail: enquiries@universalmotors-group.co.uk

* References applied only in the UK