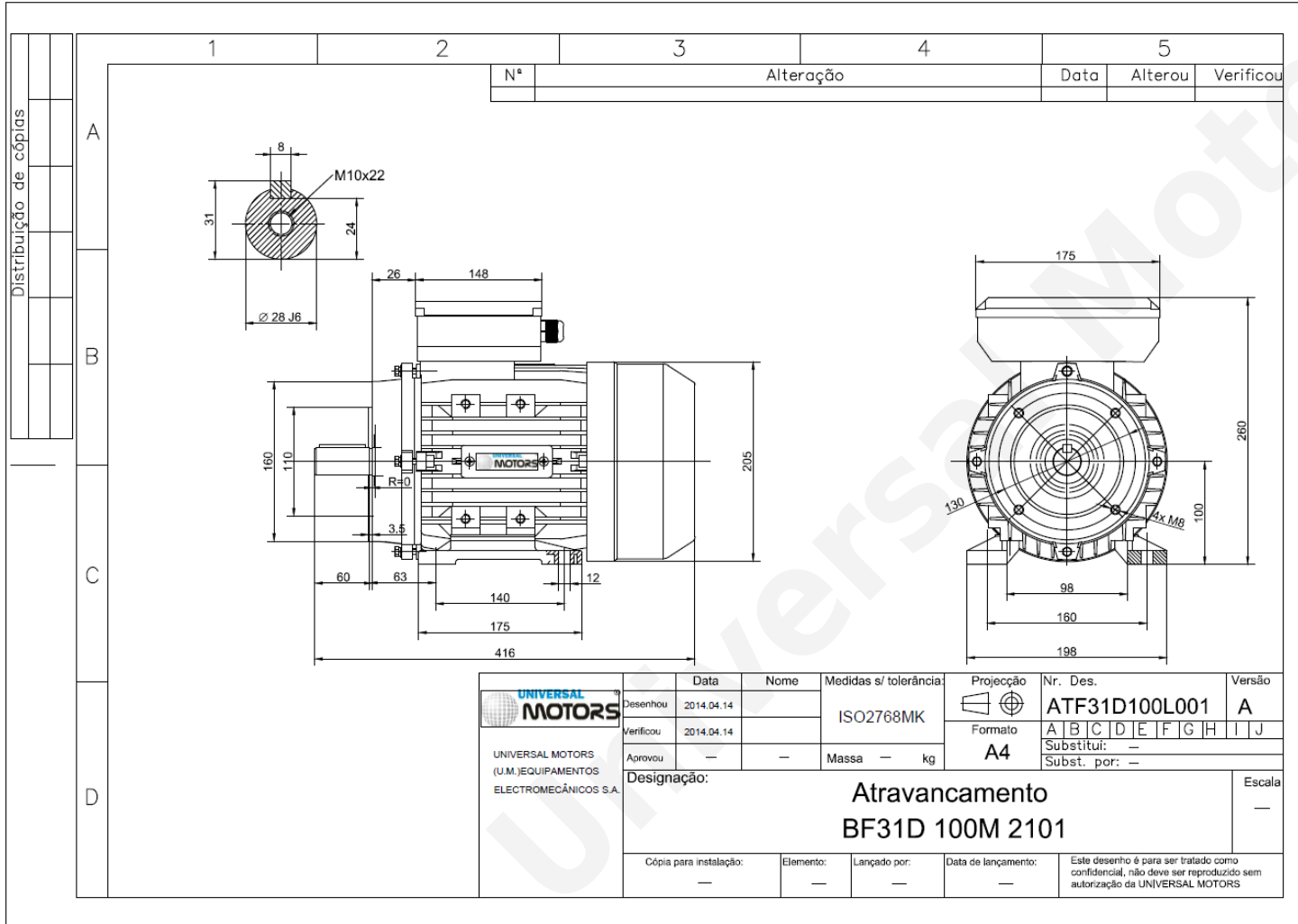


# TECHNICAL DATA

Single Phase Motors - Start Capacitor  
 UCC 100L-2  
 3 kW / 4 Cv  
 2800 RPM

Motor type: **UCC 100L-2**  
 Output: **3 kW / 4 Cv**  
 Speed (min<sup>-1</sup>): **2800 RPM**  
 Voltage: **230 V**  
 Frequency: **50 Hz**  
 Current: **18.20 A**  
 Power factor (Cos Ø): **0.95**  
 Poles: **2**  
 Insulation class: **F**  
 Temperature rise Class: **B**  
 Efficiency 100%: **79.0 %**  
 Torque: **9.88 N.m**  
 Tstarting/Tnominal: **2.2**  
 Istarting/Inominal: **6.0**  
 Tmaximum/Tnominal: **1.8**  
 Weight: **26.0 Kg**  
 Bearing DE: **6206 2Z C3**  
 Bearing NDE: **6206 2Z C3**



Regime - S1

Altitude - 1000m

Environment Temperature - 40°C

\* References applied only in the UK