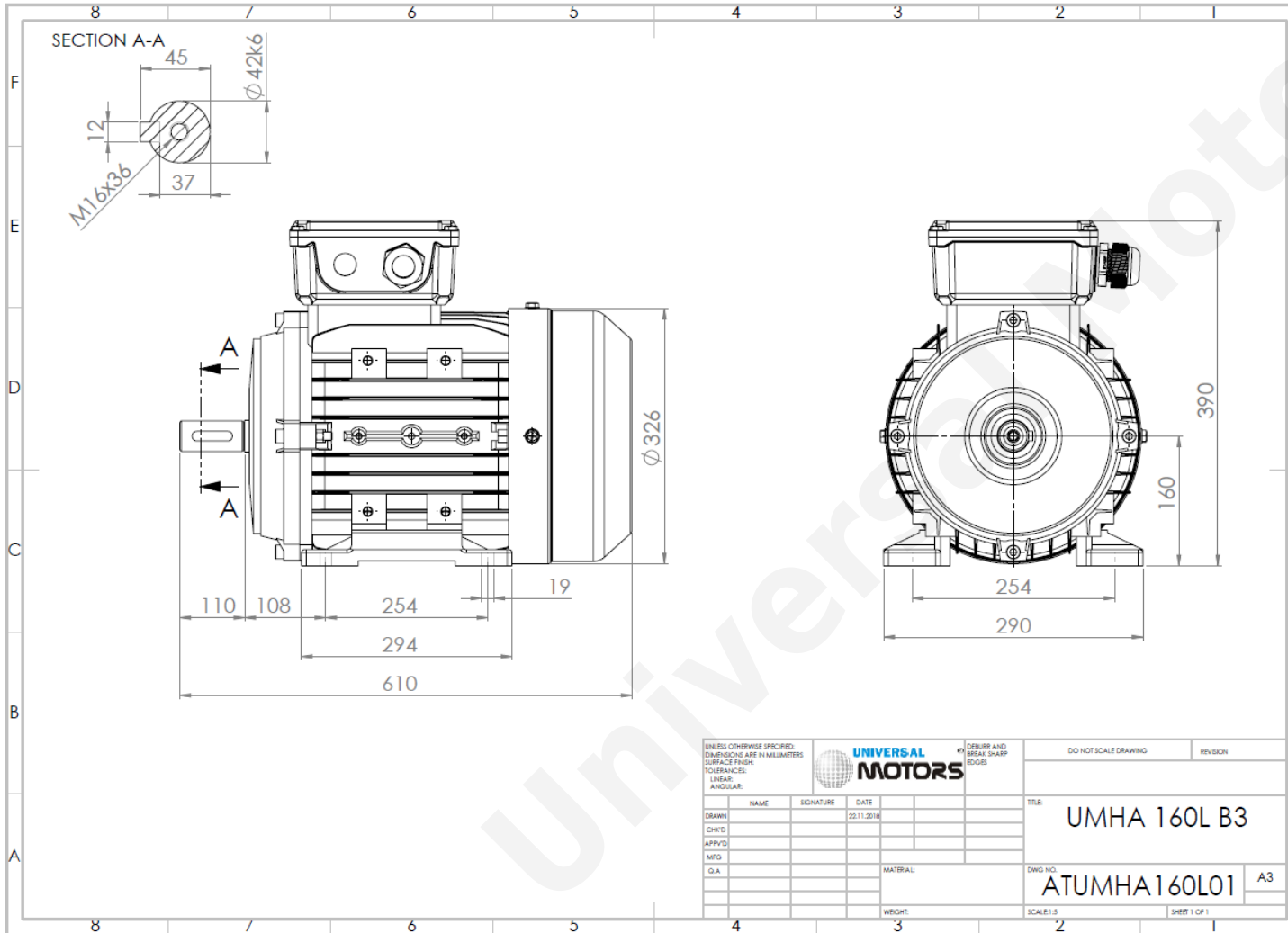


TECHNICAL DATA

Three Phase Electric Motors - Aluminum Frame
 UMHA 160L-2 IE2
 18.5 kW / 25 Cv
 2940 RPM



Motor type:	UMHA 160L-2 IE2
Output:	18.5 kW / 25 Cv
Speed (min ⁻¹):	2940 RPM
Voltage:	400 V
Frequency:	50 Hz
Current:	33.0 A
Power factor (Cos \varnothing):	0.89
Poles:	2
Insulation class:	F
Temperature rise Class:	B
Efficiency 50%:	90.7 %
Efficiency 75%:	91.3 %
Efficiency 100%:	90.9 %
Torque:	60.1 N.m
Tstarting/Tnominal:	2.2
Istarting/Inominal:	8.1
Tmaximum/Tnominal:	2.3
Noise:	87 Db(A)
Weight:	108.0 Kg
Bearing DE:	6309 2Z C3
Bearing NDE:	6309 2Z C3

Regime - S1

Altitude - 1000m

Environment Temperature - 40°C

* References applied only in the UK