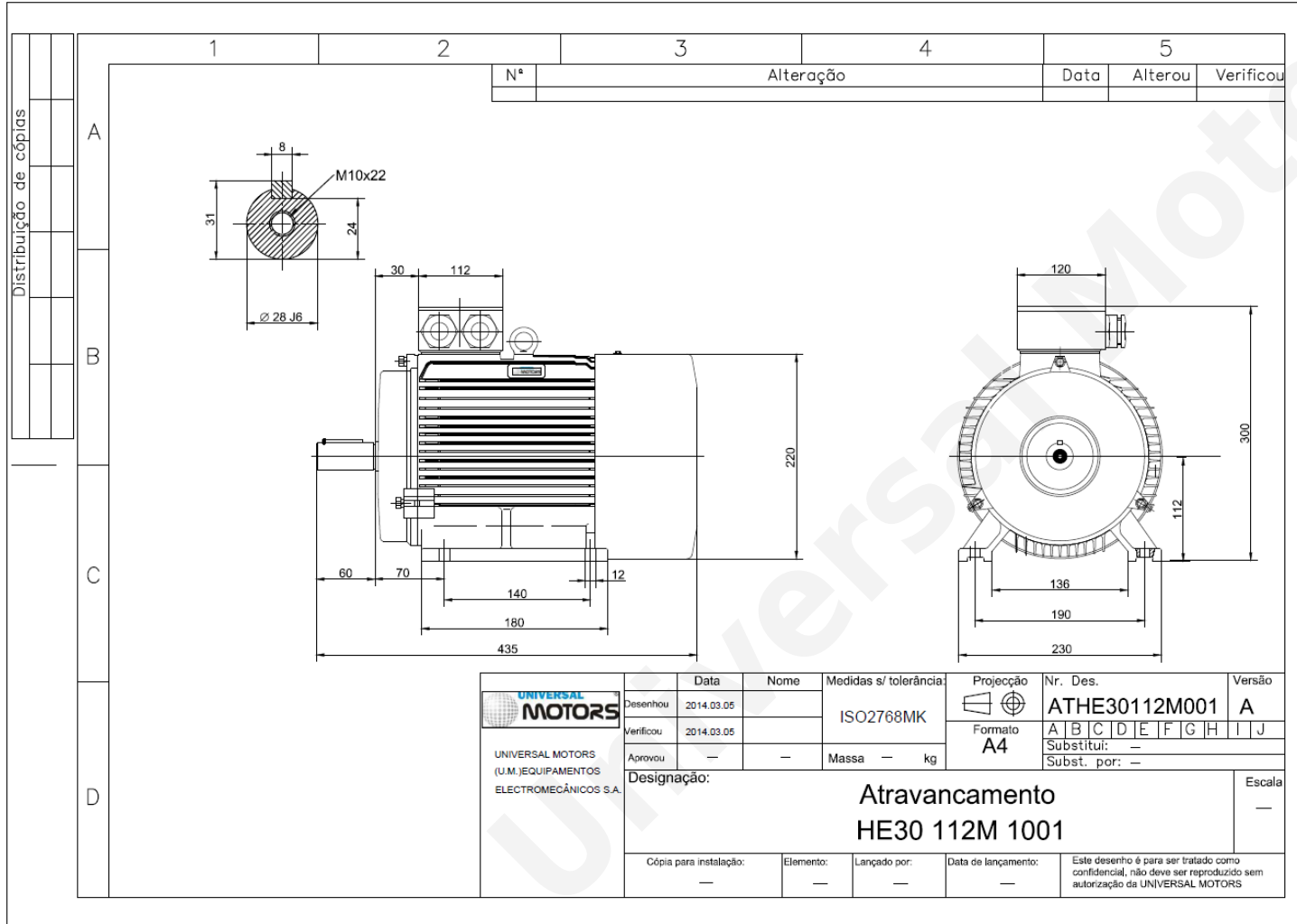


TECHNICAL DATA

Three Phase Electric Motors - Cast Iron Frame
 UMHC 112M-2 IE2
 4 kW / 5.5 Cv
 2900 RPM



| | |
|-----------------------------|------------------------|
| Motor type: | UMHC 112M-2 IE2 |
| Output: | 4 kW / 5.5 Cv |
| Speed (min ⁻¹): | 2900 RPM |
| Voltage: | 400 V |
| Frequency: | 50 Hz |
| Current: | 7.6 A |
| Power factor (Cos Ø): | 0.88 |
| Poles: | 2 |
| Insulation class: | F |
| Temperature rise Class: | B |
| Efficiency 50%: | 85.5 % |
| Efficiency 75%: | 87.0 % |
| Efficiency 100%: | 85.8 % |
| Torque: | 13.2 N.m |
| Tstarting/Tnominal: | 2.3 |
| Istarting/Inominal: | 8.3 |
| Tmaximum/Tnominal: | 2.3 |
| Noise: | 77 Db(A) |
| Weight: | 46 Kg |
| Bearing DE: | 6306 2Z C3 |
| Bearing NDE: | 6306 2Z C3 |

Regime - S1

Altitude - 1000m

Environment Temperature - 40°C

* References applied only in the UK